



Redcliffe Square, Chelsea, SW10

For the finer things in property.

**STRUTT  
& PARKER**

BNP PARIBAS GROUP

## Redcliffe Square, Chelsea, SW10

A stunning, turnkey, incredibly grand, lateral raised ground floor two-bedroom flat in Chelsea.

Principal suite | Second bedroom | Access to roof terrace | Utility room / Storage cupboard  
Grand common parts | Raised ground floor  
Share of freehold | EPC Rating C

A truly sensational raised ground floor two-bedroom flat (with access to roof terrace) with grand proportions. Enjoying over 3.6m high ceilings throughout, two bay windows and offered to the market newly developed and turnkey, share of freehold.

This stunning flat is found in a superb position in the corner building of the Western side of Redcliffe Square leaving the property with a dual aspect, encouraging maximum light exposure through two large bay windows in the principal rooms. The reception room has charming views across to St Luke's Church and views over the square itself.

This grand and stately building enjoys magnificent communal hallways leading to the property on the raised ground floor. This flat further benefits from a share of freehold and access to a communal roof terrace.

### Terms

**Tenure:** Share of freehold

**Service Charge:** £6,000 pa

**Council Tax:** Band G

**Local Authority:** The Royal Borough of Kensington and Chelsea

**Asking Price:** £1,995,000

**Chelsea SW10**

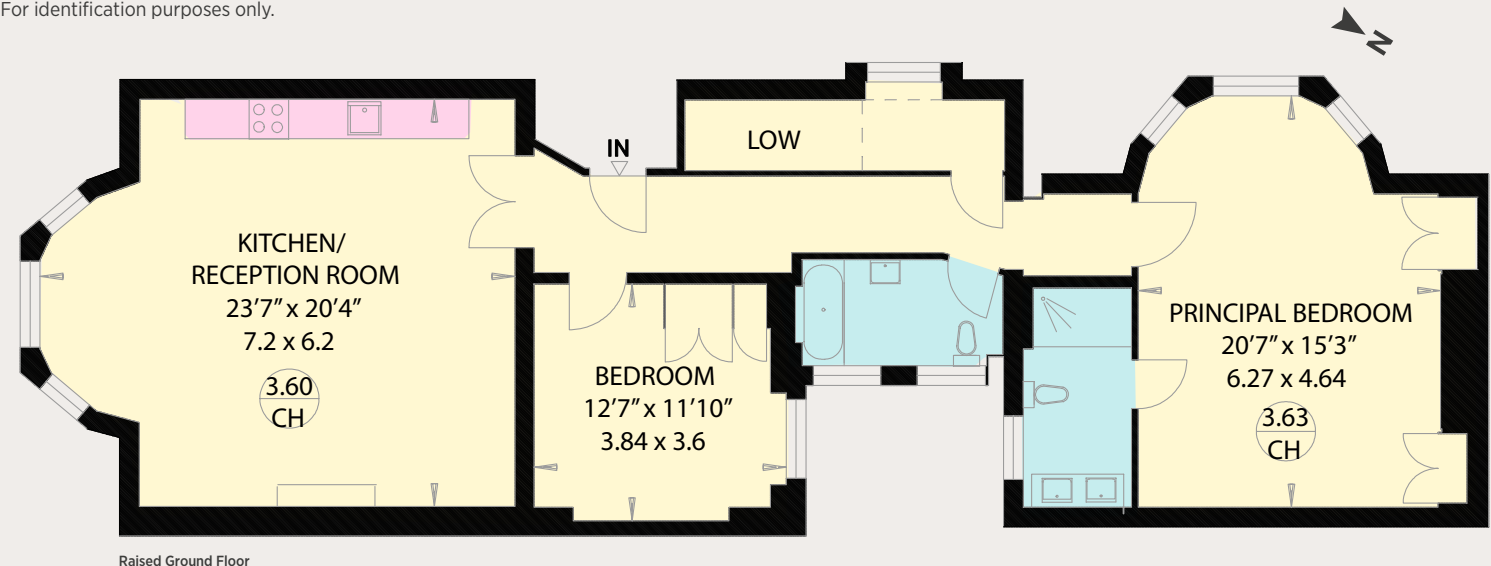
140 Fulham Road, London, SW10 9PY

**020 7373 1010**

chelseaSW10@struttandparker.com

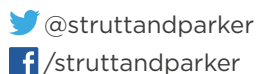


Gross Internal Area 1,216 sq ft (112.9 sq m) including low height  
1,185 sq ft (110 sq m) excluding low height  
For identification purposes only.



### IMPORTANT NOTICE

Strutt & Parker gives notice that: 1. These particulars do not constitute an offer or contract or part thereof. 2. All descriptions, photographs and plans are for guidance only and should not be relied upon as statements or representations of fact. All measurements are approximate and not necessarily to scale. Any prospective purchaser must satisfy themselves of the correctness of the information within the particulars by inspection or otherwise. 3. Strutt & Parker does not have any authority to give any representations or warranties whatsoever in relation to this property (including but not limited to planning/building regulations), nor can it enter into any contract on behalf of the Vendor. 4. Strutt & Parker does not accept responsibility for any expenses incurred by prospective purchasers in inspecting properties which have been sold, let or withdrawn. 5. We are able to refer you to SPF Private Clients Limited ("SPF") for mortgage broking services, and to Alexander James Interiors ("AJI"), an interior design service. Should you decide to use the services of SPF, we will receive a referral fee from them of 25% of the aggregate of the fee paid to them by you for the arrangement of a mortgage and any fee received by them from the product provider. Should you decide to use the services of AJI, we will receive a referral fee of 10% of the net income received by AJI for the services they provide to you. 6. If there is anything of particular importance to you, please contact this office and Strutt & Parker will try to have the information checked for you. Photographs taken December 2023. Particulars prepared December 2023. Strutt & Parker is a trading style of BNP Paribas Real Estate Advisory & Property Management UK Limited.



Over 45 offices across England and Scotland,  
including Prime Central London

**For the finer things in property.**

