

# Redcliffe Square

Chelsea, SW10



**STRUTT  
& PARKER**

BNP PARIBAS GROUP



## A truly exceptional, three-bedroom, two-bathroom flat, presented in immaculate condition.

This wonderful home has undergone an extensive refurbishment, featuring a beautiful contemporary finish and offering substantial living space, measuring over 1,350 square feet.



**1 RECEPTION ROOM**



**3 BEDROOMS**



**2 BATHROOMS**



**SHARE OF FREEHOLD**



**1,363 SQ FT**



**PRICE  
£1,395,000**



### The property

The accommodation offers three bedrooms, a family bathroom, an additional en-suite bathroom, a spacious reception/dining room, a separate kitchen and patio at the rear.

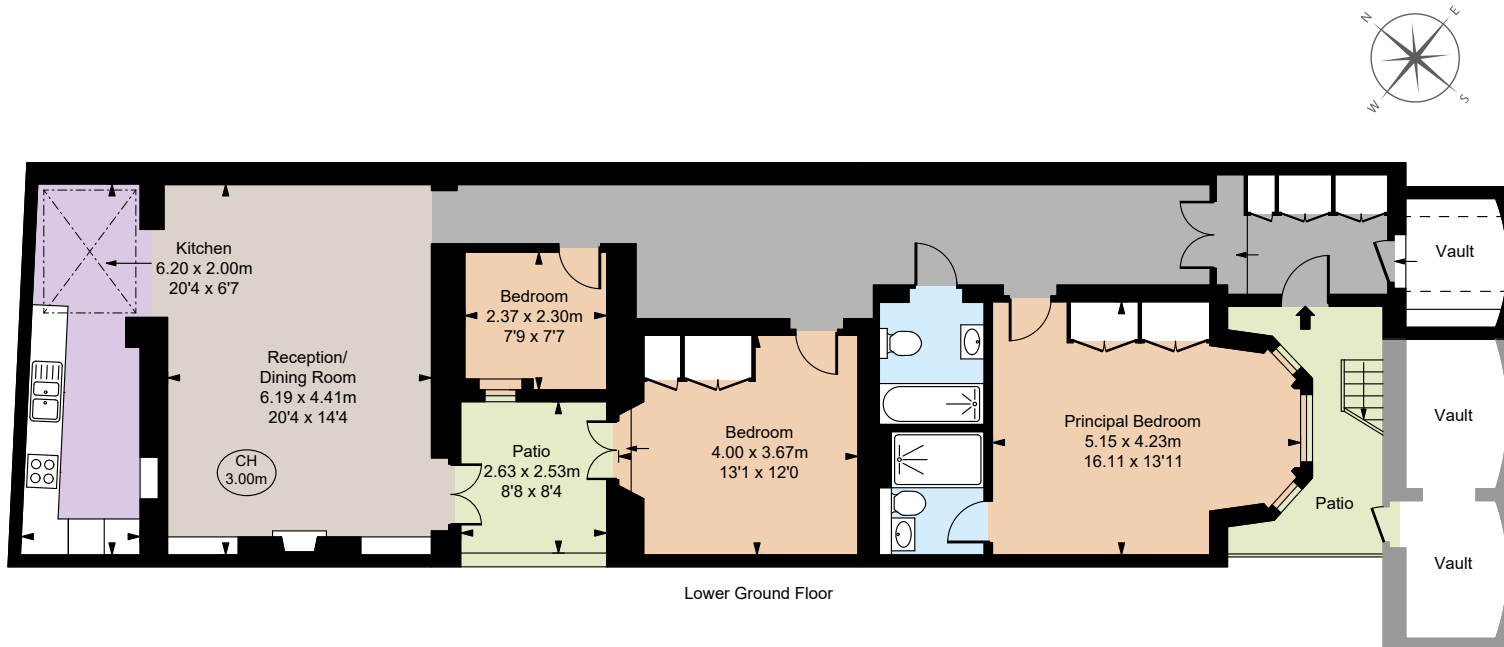
### Location

Located on the lower ground floor, this apartment is a truly special home, presented to a high quality, positioned on Redcliffe Square, conveniently placed for Earl's Court tube station (District & Piccadilly Line) and the vast collection of boutique shops, cafes and restaurants found on the Fulham Road and the Old Brompton Road.









## Floorplans

**Gross internal area** 1,363 sq ft (126.62 sq m)  
**Vaults** 90 sq ft (8.37 sq m)  
**Total Areas Shown On Plan** 1,453 sq ft (134.99 sq m)  
 For identification purposes only.

## General

**Tenure:** leasehold (955 years) & Share of Freehold  
**Local Authority:** The Royal Borough of Kensington and Chelsea  
**Service Charge:** £3,179.50 per annum  
**Council Tax:** Band E  
**EPC Rating:** C  
**Parking:** Residents' parking  
**Broadband:** Available

**IMPORTANT NOTICE:** Strutt & Parker gives notice that: 1. These particulars do not constitute an offer or contract or part thereof. 2. All descriptions, photographs and plans are for guidance only and should not be relied upon as statements or representations of fact. All measurements are approximate and not necessarily to scale. Any prospective purchaser must satisfy themselves of the correctness of the information within the particulars by inspection or otherwise. 3. Strutt & Parker does not have any authority to give any representations or warranties whatsoever in relation to this property (including but not limited to planning/building regulations), nor can it enter into any contract on behalf of the Vendor. 4. Strutt & Parker does not accept responsibility for any expenses incurred by prospective purchasers in inspecting properties which have been sold, let or withdrawn. 5. We are able to refer you to SPF Private Clients Limited ("SPF") for mortgage broking services, and to Alexander James Interiors ("AJI"), an interior design service. Should you decide to use the services of SPF, we will receive a referral fee from them of 25% of the aggregate of the fee paid to them by you for the arrangement of a mortgage and any fee received by them from the product provider. Should you decide to use the services of AJI, we will receive a referral fee of 10% of the net income received by AJI for the services they provide to you. 6. If there is anything of particular importance to you, please contact this office and Strutt & Parker will try to have the information checked for you. Photographs taken March 2025. Particulars prepared March 2025. Strutt & Parker is a trading style of BNP Paribas Real Estate Advisory & Property Management UK Limited

**Chelsea SW10**

140 Fulham Road, London, SW10 9PY

**020 7373 1010**

chelseaSW10@struttandparker.com  
 struttandparker.com



@struttandparker

Over 50 offices across England and Scotland,  
 including Prime Central London

**For the finer things in property.**

