

# The North Penthouse, Roland Gardens



Strutt  
& Parker

Land and property. Since 1885.

## A stunning four-bedroom, three-bathroom penthouse apartment with panoramic views of London.

An exceptional penthouse apartment. The North Penthouse is entered on the 8th floor, via direct lift access, into a double height glass atrium from which the rest of the apartment flows.

There is a fabulous open-plan reception area on the top floor with floor-to-ceiling windows and doors that open onto a wraparound balcony. Arranged in a u-shape, there is a dual aspect reception area one end and the kitchen and dining area to the other. The bedrooms are on the floor below which also has a wraparound balcony and includes a luxurious principal bedroom suite and three further guest bedrooms.

The North Penthouse was stylishly designed in a contemporary fashion using a combination of wood, glass, steel and marble. There is air-conditioning, remote controlled blinds, under floor heating in the bathrooms.

Roland House has 24-hour concierge and security services.



### Location

Ideally positioned for either South Kensington or Gloucester Road Underground stations, the North Penthouse is also perfectly placed for easy access to Knightsbridge, the West End and the City of London, with an extensive selection of shops, bars and restaurants in the local area.

Postcode region: SW7

### General

Local Authority: Royal Borough of Kensington and Chelsea

Council Tax: Band H

EPC Rating: D

Parking: Parking permit available

Mobile coverage and broadband: Information can be found here: <https://checker.ofcom.org.uk/en-gb/mobile-coverage>.

\* Tenant Charges may apply please visit [struttandparker.com/tenantcharges](http://struttandparker.com/tenantcharges) for more information

3,399 sq ft (315.81 sq m)

Lift

Concierge and porter

Air conditioning

Unfurnished

Price £4,500 per week\*



THE NORTH PENTHOUSE, SW7

Gross internal area 3,399 sq ft (315.81 sq m)

including restricted height under 1.5m ( [ - - - - ] )

(Excluding Lift)

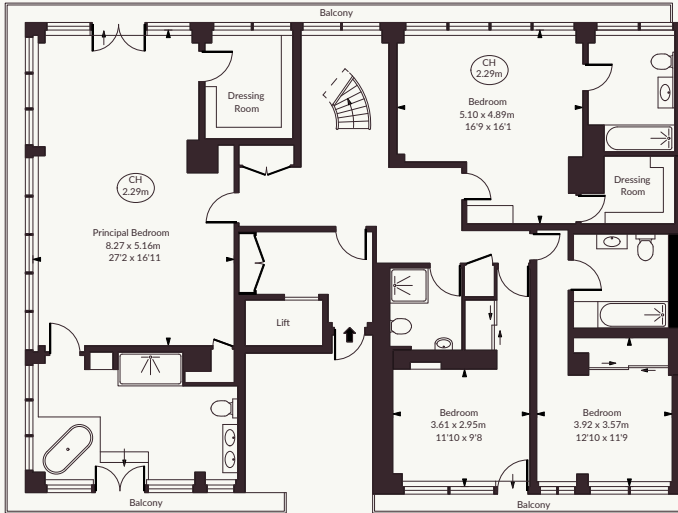
CH = Ceiling Heights

For identification purposes only

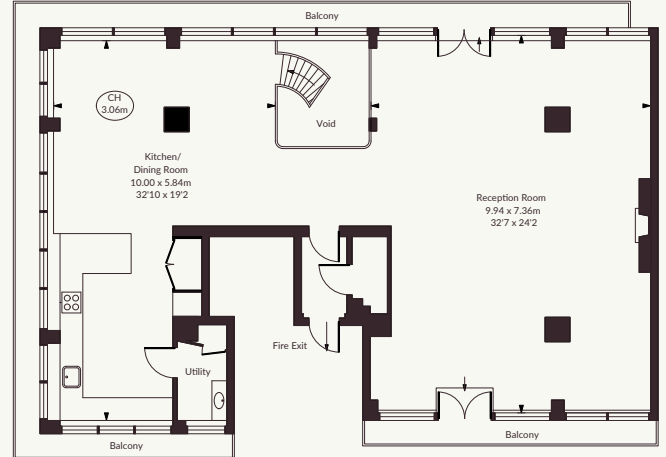


For illustrative purposes only - not to scale

The position and size of doors, windows, appliances and other features are approximate only



Eighth Floor  
Approximate Gross Internal Area  
177.80 sq m / 1,914 sq ft



Ninth Floor  
Approximate Gross Internal Area  
137.92 sq m / 1,485 sq ft

Chelsea SW10

140 Fulham Road, London, SW10 9PY]

020 7373 1010 | chelseaSW10@struttandparker.com



@struttandparker

struttandparker.com

IMPORTANT NOTICE: Strutt & Parker gives notice that: 1. These particulars do not constitute an offer or contract or part thereof. 2. All descriptions, photographs and plans are for guidance only and should not be relied upon as statements or representations of fact. All measurements are approximate and not necessarily to scale. Any prospective purchaser must satisfy themselves of the correctness of the information within the particulars by inspection or otherwise. 3. Strutt & Parker does not have any authority to give any representations or warranties whatsoever in relation to this property (including but not limited to planning/building regulations), nor can it enter into any contract on behalf of the Vendor. 4. Strutt & Parker does not accept responsibility for any expenses incurred by prospective purchasers in inspecting properties which have been sold, let or withdrawn. 5. We are able to refer you to SPF Private Clients Limited ("SPF") for mortgage broking services, and to Alexander James Interiors ("AJI"), an interior design service. Should you decide to use the services of SPF, we will receive a referral fee from them of 25% of the aggregate of the fee paid to them by you for the arrangement of a mortgage and any fee received by them from the product provider. Should you decide to use the services of AJI, we will receive a referral fee of 10% of the net income received by AJI for the services they provide to you. 6. If there is anything of particular importance to you, please contact this office and Strutt & Parker will try to have the information checked for you. Strutt & Parker is a trading style of BNP Paribas Real Estate Advisory & Property Management UK Limited. Photographs taken June 2026. Particulars prepared June 2026.

Strutt  
& Parker

Land and property. Since 1885.