

Rosaville Road,
Fulham

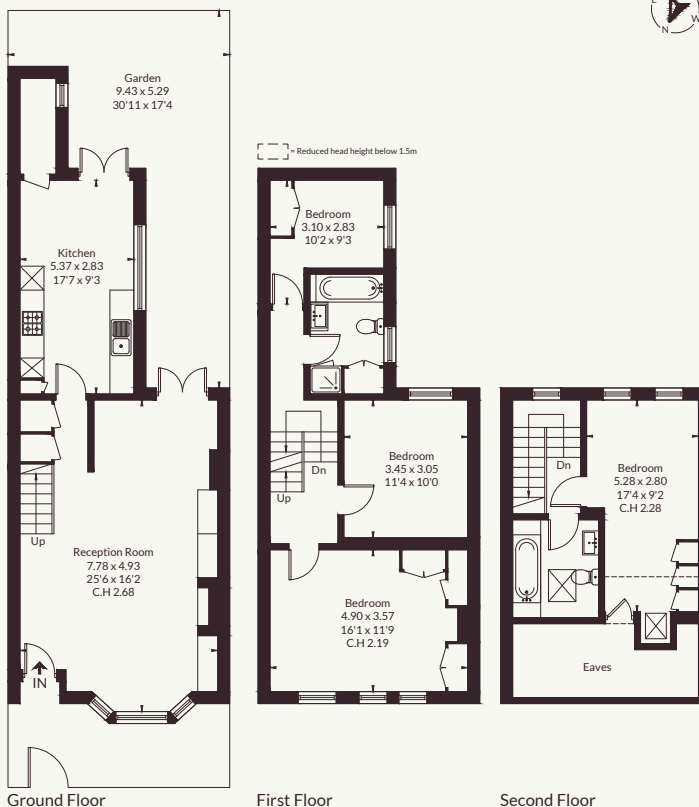


Strutt
& Parker

Land and property. Since 1885.



Approximate Floor Area = 141.2 sq m / 1520 sq ft
(Including Eaves)



This floor plan has been drawn in accordance with RICS Property Measurement 2nd edition.
All measurements, including the floor area, are approximate and for illustrative purposes only. @fourwalls-group.com #109247

Strutt & Parker Fulham

701 Fulham Road, London, SW6 5UL
020 7731 7100 | Fulham@struttandparker.com



@struttandparker struttandparker.com

IMPORTANT NOTICE: Strutt & Parker gives notice that: 1. These particulars do not constitute an offer or contract or part thereof. 2. All descriptions, photographs and plans are for guidance only and should not be relied upon as statements or representations of fact. All measurements are approximate and not necessarily to scale. Any prospective purchaser must satisfy themselves of the correctness of the information within the particulars by inspection or otherwise. 3. Strutt & Parker does not have any authority to give any representations or warranties whatsoever in relation to this property (including but not limited to planning/building regulations), nor can it enter into any contract on behalf of the Vendor. 4. Strutt & Parker does not accept responsibility for any expenses incurred by prospective purchasers in inspecting properties which have been sold, let or withdrawn. 5. We are able to refer you to SPF Private Clients Limited ("SPF") for mortgage broking services, and to Alexander James Interiors ("AJI"), an interior design service. Should you decide to use the services of SPF, we will receive a referral fee from them of 25% of the aggregate of the fee paid to them by you for the arrangement of a mortgage and any fee received by them from the product provider. Should you decide to use the services of AJI, we will receive a referral fee of 10% of the net income received by AJI for the services they provide to you. 6. If there is anything of particular importance to you, please contact this office and Strutt & Parker will try to have the information checked for you. Strutt & Parker is a trading style of BNP Paribas Real Estate Advisory & Property Management UK Limited. Photographs taken May 2026. Particulars prepared May 2026.

A charming four-bedroom "villes" house, with a south-facing garden.

The house has been extended into the loft but provides the opportunity to extend and improve further (subject to the usual consents). The ground floor comprises a double reception room, kitchen with shaker style units and a very useful utility room, French doors lead out to the south-facing garden. The first floor provides three double bedrooms and a family bathroom. The second floor provides a further bedroom and bathroom.

Rosaville Road is ideally located in a quiet residential area known as the "villes" close to the shops, cafes and restaurants of Parsons Green, Fulham Road and Munster Road. The nearest underground stations are either Parsons Green or Fulham Broadway (District Line).

General

Tenure: Freehold
Local Authority: London Borough of Hammersmith and Fulham
Council Tax: Band G
EPC Rating: D
Parking: Residents parking
Mobile and Broadband checker:
Information can be found here <https://checker.ofcom.gov.uk/en-gb/>

1,520 sq ft (141.2 sq m)
4 bedrooms | 2 bathrooms
3 floors
Garden

Guide price £1,395,000

Strutt & Parker