



ROSE SQUARE

THE BROMPTONS SW3



A sensational circa 2,300 sq ft
two bedroom lateral flat with roof
terraces, lift, swimming pool, porter
and secure underground parking.



The Bromptons, Rose Square is a collection of stunning period buildings that were originally constructed as a hospital in 1844 and subsequently redeveloped by Northacre in 1997. This exclusive, modern and highly secure, gated development retains many of its original architectural attributes.

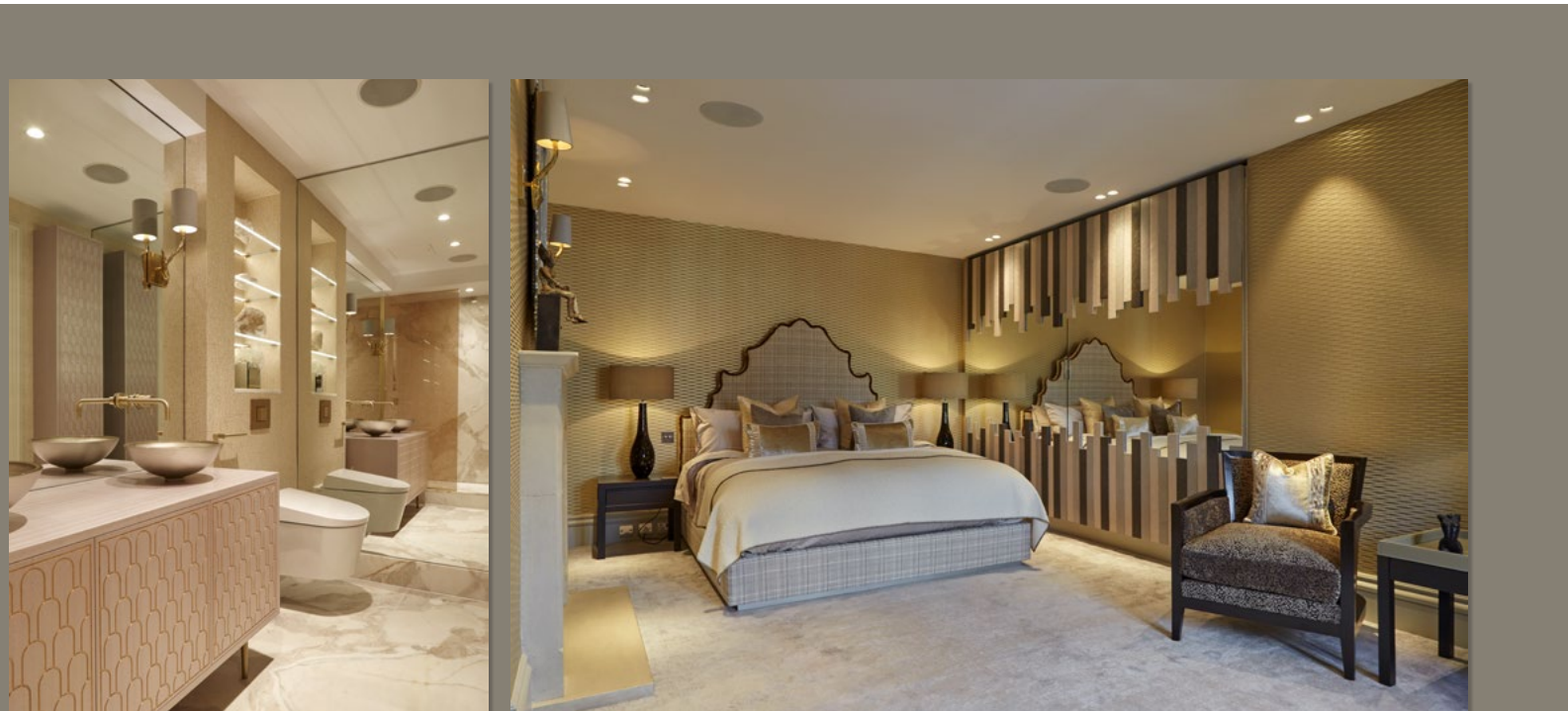
Being one of the most sought-after addresses in prime central London , The Bromptons benefits from beautiful manicured private gardens, secure underground parking, 24-hour porter and security, a dedicated long-standing concierge, a swimming pool and gym.

This sensational property was designed and refurbished for our client by a well-known London interior designer and comprises two double bedrooms with fitted wardrobes, three bathrooms (two en suite), two with showers over the bath and one with a bath, large reception room with vaulted ceilings and wooden flooring, television room, study area, relaxation area, large west-facing roof terrace and a viewing platform.



- Two double bedrooms
- Three bathrooms (two en suite)
- Large reception room
- Television room
- Study area
- Relaxation area
- Large west-facing roof terrace
- Viewing platform





Tenure: Leasehold, 975 years remaining,
plus a share of the management company

Guide Price: £5,995,000

Service Charge: £29,670 per annum
including £6,200 reserve fund contribution

Ground Rent: £500 per annum

Local Authority: The Royal Borough
of Kensington & Chelsea

EPC: Rating E

Council Tax: Band H

Approximate Gross Internal Area
2,000 sq ft / 185.8 sq m

Private Entrance Hall
not demised
336 sq ft / 31.2 sq m

Parking Space Area
123 sq ft / 11.4 sq m



Third Floor



Fourth Floor

Fifth Floor

IMPORTANT NOTICE: Strutt & Parker gives notice that: 1. These particulars do not constitute an offer or contract or part thereof. 2. All descriptions, photographs and plans are for guidance only and should not be relied upon as statements or representations of fact. All measurements are approximate and not necessarily to scale. Any prospective purchaser must satisfy themselves of the correctness of the information within the particulars by inspection or otherwise. 3. Strutt & Parker does not have any authority to give any representations or warranties whatsoever in relation to this property (including but not limited to planning/building regulations), nor can it enter into any contract on behalf of the Vendor. 4. Strutt & Parker does not accept responsibility for any expenses incurred by prospective purchasers in inspecting properties which have been sold, let or withdrawn. 5. We are able to refer you to SPF Private Clients Limited ("SPF") for mortgage broking services, and to Alexander James Interiors ("AJI"), an interior design service. Should you decide to use the services of SPF, we will receive a referral fee from them of 25% of the aggregate of the fee paid to them by you for the arrangement of a mortgage and any fee received by them from the product provider. Should you decide to use the services of AJI, we will receive a referral fee of 10% of the net income received by AJI for the services they provide to you. 6. If there is anything of particular importance to you, please contact this office and Strutt & Parker will try to have the information checked for you. **Photographs taken June 2020 and September 2023. Particulars prepared September 2023.** Strutt & Parker is a trading style of BNP Paribas Real Estate Advisory & Property Management UK Limited. 12/09/23S&P-230824-06GG

South Kensington & Earl's Court

90 Old Brompton Road, SW7 3LQ

+44 (0)20 7581 7000

southken@struttandparker.com
struttandparker.com

@struttandparker

/struttandparker

Over 45 offices across England and Scotland,
including Prime Central London