



Royal Avenue
Chelsea, SW3

STRUTT
& PARKER

BNP PARIBAS GROUP

Royal Avenue, Chelsea, SW3

A superb raised ground floor apartment, with its own front door and westerly facing drawing room located on the Royal Avenue, Chelsea.



RECEPTION ROOM



BEDROOM



BATHROOM



SHARE OF FREEHOLD



SQ FT



GUIDE PRICE
££££££££



The property

Royal Avenue is arguably one of Chelsea's most prestigious addresses being only yards from Sir Christopher Wren's Royal Hospital and only a stone's throw from the King's Road with all the shops, bars and restaurants that it has to offer.

An extensive renovation of the block has just been completed, and the incoming purchaser will benefit from a brand-new roof and a complete exterior overhaul.

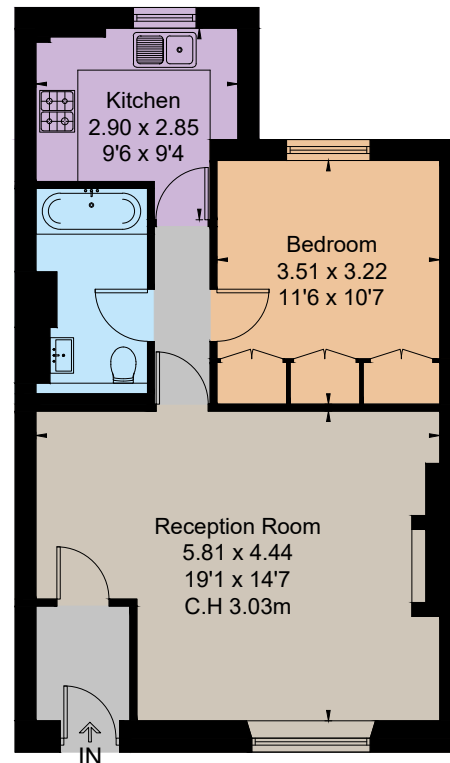
In 1681, Sir Christopher Wren approved a scheme to connect the Royal Hospital Chelsea with Kensington Palace. The project was never completed and stopped short at the King's Road. Vehicular access to King's Road was closed off in the 1970's protecting this haven in the heart of Chelsea.

Sloane Square underground station (Circle and District lines) is 0.4 miles away.





Approximate Floor Area = 52.3 sq m / 563 sq ft



Raised Ground Floor



This floor plan has been drawn in accordance with RICS Property Measurement 2nd edition.
All measurements, including the floor area, are approximate and for illustrative purposes only. @fourwalls-group.com #94529



Floorplans

Flat internal area 563 sq ft (52.3 sq m)
For identification purposes only.

General

Tenure: Share of freehold 963 years.
999 years from 24 June 1990

Local Authority: The Royal borough of Kensington
and Chelsea

Broadband: Installed at the property

Council Tax: Band F

EPC Rating: C

Parking: Residents permit

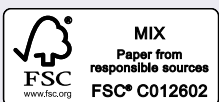
Service Charge: £1390 per quarter, which includes
buildings insurance.

Chelsea

43 Cadogan Street, London, SW3 2PR

02036214788

chelsea@struttandparker.com
struttandparker.com



@struttandparker

Over 50 offices across England and
Scotland, including Prime Central London

For the finer things in property.

