

Salisbury Mews

London, SW6



**STRUTT
& PARKER**

BNP PARIBAS GROUP

A rarely available gated mews house, in central Fulham.

The house is built for entertaining, with two floors of living space and generous bedrooms including a fabulous principal bedroom suite.



2 RECEPTION ROOMS



2 BEDROOMS



3 BATHROOMS



FREEHOLD



2,021 SQ FT



**ASKING PRICE
£1,500,000**



The property

Entered on the raised ground floor, there is a generous hallway, a shower room that offers a huge amount of flexibility for the use of space within the house. The reception room on this level benefits from bifold doors which open out onto a balcony overlooking the communal garden. Downstairs on the lower ground floor there is another large reception room with access out to the garden, a fully integrated modern kitchen and large utility room, with WC.

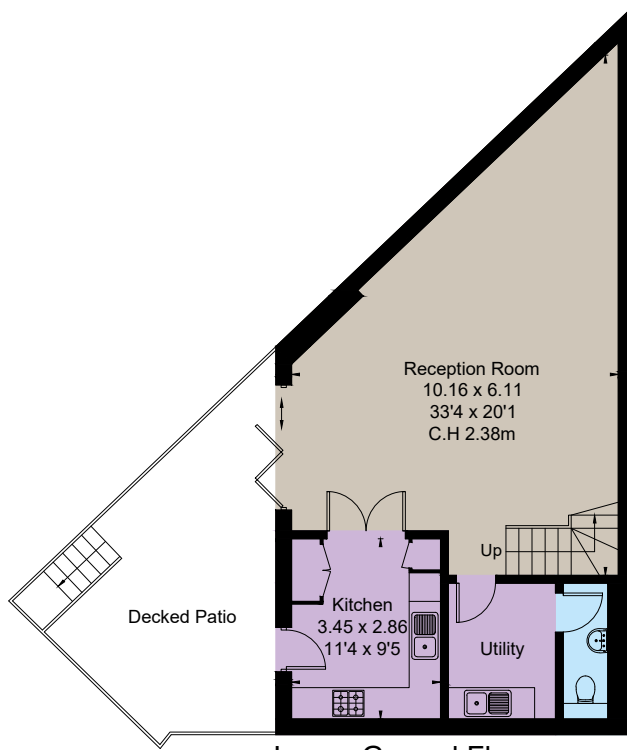
The top floor provides a luxurious principal bedroom suite with large shower room, walk in wardrobe and balcony. The second bedroom is a good sized double and has use of a third bathroom.

Location

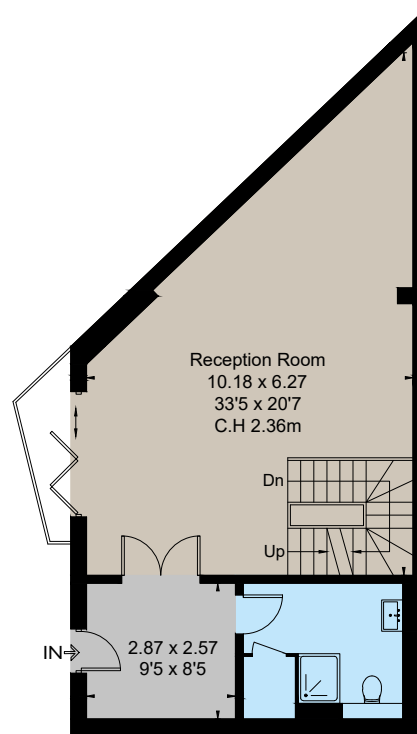
Salisbury Mews is situated off Dawes Road and benefits from the transport and shopping facilities of both Parsons Green and Fulham Broadway.



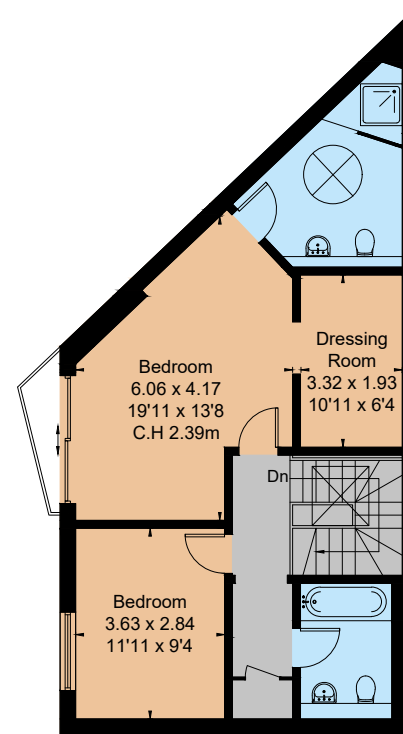




Lower Ground Floor



Ground Floor



First Floor

Floorplans

Gross internal area 2,021 sq ft (187.8 sq m)

For identification purposes only.

General

Tenure: Freehold

Local Authority: The London borough of Hammersmith and Fulham

Service Charge: Circa £500 per annum

Council Tax: Band G

EPC Rating: C

Parking: Off street

Mobile coverage and broadband: Information can be found here: <https://checker.ofcom.org.uk/en-gb/mobile-coverage>

IMPORTANT NOTICE: Strutt & Parker gives notice that: 1. These particulars do not constitute an offer or contract or part thereof. 2. All descriptions, photographs and plans are for guidance only and should not be relied upon as statements or representations of fact. All measurements are approximate and not necessarily to scale. Any prospective purchaser must satisfy themselves of the correctness of the information within the particulars by inspection or otherwise. 3. Strutt & Parker does not have any authority to give any representations or warranties whatsoever in relation to this property (including but not limited to planning/building regulations), nor can it enter into any contract on behalf of the Vendor. 4. Strutt & Parker does not accept responsibility for any expenses incurred by prospective purchasers in inspecting properties which have been sold, let or withdrawn. 5. We are able to refer you to SPF Private Clients Limited ("SPF") for mortgage broking services, and to Alexander James Interiors ("AJI"), an interior design service. Should you decide to use the services of SPF, we will receive a referral fee from them of 25% of the aggregate of the fee paid to them by you for the arrangement of a mortgage and any fee received by them from the product provider. Should you decide to use the services of AJI, we will receive a referral fee of 10% of the net income received by AJI for the services they provide to you. 6. If there is anything of particular importance to you, please contact this office and Strutt & Parker will try to have the information checked for you. Photographs taken xxxxxxxx 2025. Particulars prepared January 2026. Strutt & Parker is a trading style of BNP Paribas Real Estate Advisory & Property Management UK Limited

Fulham

701 Fulham Road, London SW6 5UL

020 7731 7100

fulham@struttandparker.com

struttandparker.com



@struttandparker

Over 50 offices across England and Scotland,
including Prime Central London

For the finer things in property.

**STRUTT
& PARKER**

BNP PARIBAS GROUP