



Slade Cottage, Sezincote, Moreton-in-Marsh, Gloucestershire

Slade Cottage, Sezincote, Moreton-in-Marsh, Gloucestershire, GL56 9TB

A light and spacious 3 bedroom cottage set in a rural location with outstanding views. Sewerage included. Available for a minimum term of 12 months. Pets considered but not suitable for children

EPC rating D

Moreton-in-Marsh 4.3 miles, Stow-on-the-Wold 4.4 miles, Broadway 7.6 miles, Daylesford 8.3 miles, Bourton-on-the-Water 8.3 miles

The property

Entrance Hall | Sitting Room | Kitchen/Breakfast Room | Conservatory | Boot Room | Landing | 2 Double Bedrooms | 1 Single Bedroom | En-Suite Bathroom | Family Bathroom | Laundry Room

Outside

Walled garden with terrace, lawn and shed. Outstanding views over open countryside. Designated parking for 2 cars

Banbury

20 Horse Fair, Banbury, Oxfordshire OX16 0AH

01295 277161

banbury@struttandparker.com
struttandparker.com

[@struttandparker](https://www.instagram.com/struttandparker)

[f/struttandparker](https://www.facebook.com/struttandparker)

60 offices across England and Scotland, including Prime Central London

Location

Slade Cottage is set within the private grounds, just 5 miles from Moreton-in-Marsh where there are comprehensive facilities including a doctors surgery, hospital, dentist and a range of shops and supermarkets. Communication links are good with a mainline station offering train links to Oxford 32 minutes and London Paddington 95 minutes

Directions

From Moreton-in-Marsh, take the A44 towards Evesham. Pass through Bourton-on-the-Hill and then after passing the B4479 on the right, take the next left. At the junction with the A424, turn left onto the A424. After approximately 400 metres, take the first driveway on the right, which has a small stone wall on either side. Follow this drive until it bends to the left and the cottage will be found on the right hand side, just after the bend. Parking is on the left, opposite the cottage

General

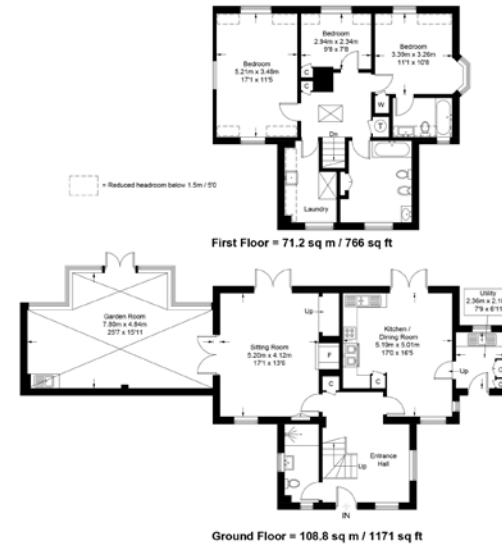
Local Authority: Cotswold District Council

Services: Mains electricity, gas and water. Gas and water invoiced quarterly by the landlord. Sewerage costs included. Underfloor heating to the entrance hall, kitchen and conservatory

Council Tax: Band F

Fixtures and Fittings: Part/unfurnished

Slade Cottage, Sezincote, Moreton In Marsh, GL56 9TB



Approximate Gross Internal Area = 180 sq m / 1937 sq ft

Illustration for identification purposes only, measurements are approximate, not to scale. (ID664218)



IMPORTANT NOTICE: Strutt & Parker gives notice that: 1. These particulars do not constitute an offer or contract or part thereof. 2. All descriptions, photographs and plans are for guidance only and should not be relied upon as statements or representations of fact. All measurements are approximate and not necessarily to scale. Any prospective purchaser must satisfy themselves of the correctness of the information within the particulars by inspection or otherwise. 3. Strutt & Parker does not have any authority to give any representations or warranties whatsoever in relation to this property (including but not limited to planning/building regulations), nor can it enter into any contract on behalf of the Vendor. 4. Strutt & Parker does not accept responsibility for any expenses incurred by prospective purchasers in inspecting properties which have been sold, let or withdrawn. 5. We are able to refer you to SPF Private Clients Limited ("SPF") for mortgage broking services, and to Alexander James Interiors ("AJI"), an interior design service. Should you decide to use the services of SPF, we will receive a referral fee from them of 25% of the aggregate of the fee paid to them by you for the arrangement of a mortgage and any fee received by them from the product provider. Should you decide to use the services of AJI, we will receive a referral fee of 10% of the net income received by AJI for the services they provide to you. 6. If there is anything of particular importance to you, please contact this office and Strutt & Parker will try to have the information checked for you. Photographs taken July 2020. Particulars prepared July 2020. Strutt & Parker is a trading style of BNP Paribas Real Estate Advisory & Property Management UK Limited