



Shelley Court, Tite Street, Chelsea, SW3

**STRUTT & PARKER**  
BNP PARIBAS GROUP



## Shelley Court, Tite Street, Chelsea, SW3

A beautifully presented three-bedroom family apartment situated on the second floor of this highly regarded period mansion building, close to the Royal Hospital and Burton Court Gardens. This bright and spacious lateral apartment provides well balanced accommodation throughout. Of particular note is the attractive bay window in the master bedroom, and full height double doors in the reception room, which open onto a pretty balcony.

Entrance hall | Drawing room | Kitchen/  
dining room | TV room/snug | Master bedroom  
with en suite bathroom | Two further double  
bedrooms | Shower room | Utility cupboard  
Balcony | Two storage rooms | Resident porter  
EPC Rating D

### The property

Shelley Court is a very well managed building with resident porter, located at the southern end of Tite Street, close to the King's Road and Sloane Square, and all the green spaces nearby, including the Physic Gardens and Battersea Park.

### Terms

**Tenure:** Leasehold, expiring on 20th June 2105, therefore having approximately 83 years remaining

**Ground Rent:** TBC

**Service Charge:** TBC

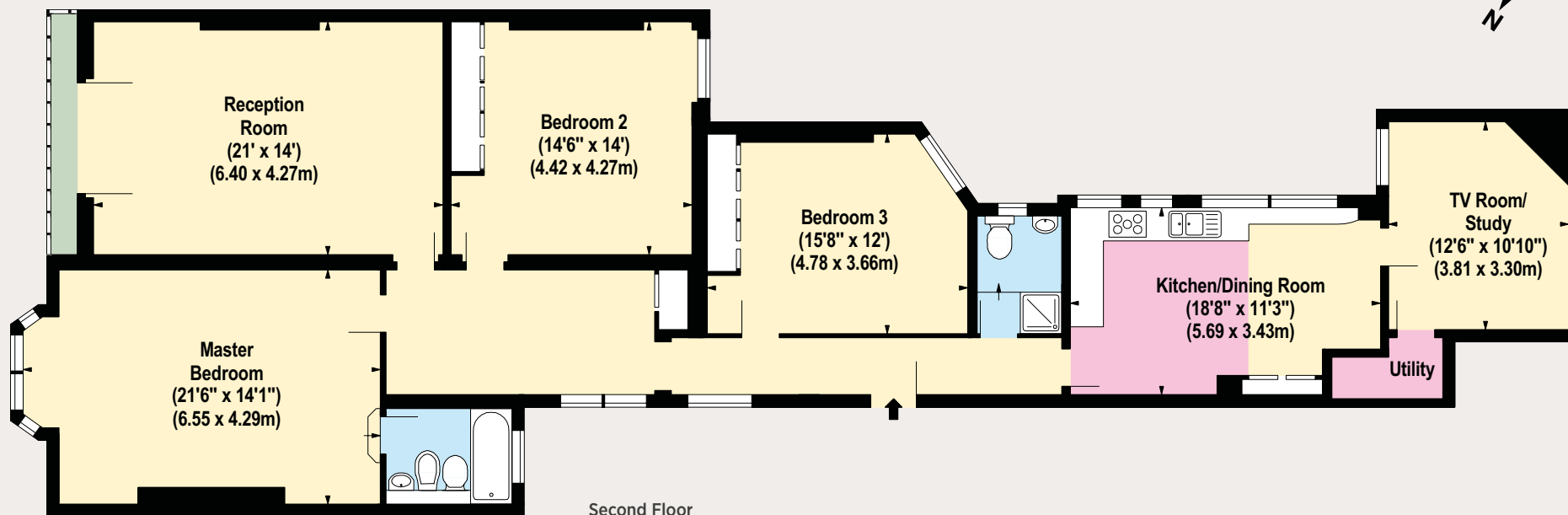
**Local Authority:** The Royal Borough of Kensington and Chelsea

**Price:** £3,550,000 Subject to Contract





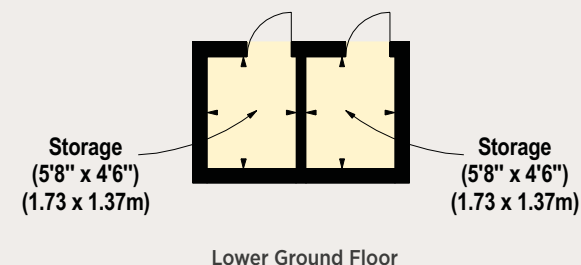




Approx. Gross Internal Area 1,759 sq ft - 163.41 sq m  
(Including Stores of 54 sq ft)

Illustration For Identification Only, Not to Scale  
All Calculations include Any/All Areas Under 1.5m Head Height.

\* As Defined by RICS - Code of Measuring Practice



## Sloane Street

66 Sloane Street, London SW1X 9SH

**020 7235 9959**

sloanestreet@struttandparker.com

### IMPORTANT NOTICE

Strutt & Parker gives notice that: 1. These particulars do not constitute an offer or contract or part thereof. 2. All descriptions, photographs and plans are for guidance only and should not be relied upon as statements or representations of fact. All measurements are approximate and not necessarily to scale. Any prospective purchaser must satisfy themselves of the correctness of the information within the particulars by inspection or otherwise. 3. Strutt & Parker does not have any authority to give any representations or warranties whatsoever in relation to this property (including but not limited to planning/building regulations), nor can it enter into any contract on behalf of the Vendor. 4. Strutt & Parker does not accept responsibility for any expenses incurred by prospective purchasers in inspecting properties which have been sold, let or withdrawn. 5. We are able to refer you to SPF Private Clients Limited ("SPF") for mortgage broking services, and to Alexander James Interiors ("AJI"), an interior design service. Should you decide to use the services of SPF, we will receive a referral fee from them of 25% of the aggregate of the fee paid to them by you for the arrangement of a mortgage and any fee received by them from the product provider. Should you decide to use the services of AJI, we will receive a referral fee of 10% of the net income received by AJI for the services they provide to you. 6. If there is anything of particular importance to you, please contact this office and Strutt & Parker will try to have the information checked for you. Photographs taken March 2021. Particulars prepared April 2021. Strutt & Parker is a trading style of BNP Paribas Real Estate Advisory & Property Management UK Limited.

Brochure by TwentyOneFifty Tel: 020 8778 2150