

Sirdar Road,
Notting Hill



Strutt
& Parker

Land and property. Since 1885.

A beautifully presented three-bedroom home with exceptional entertaining space and a south-facing balcony

An impressive new-build home which offers a generous balance of well-proportioned living and entertaining space. The property features a stylish open-plan kitchen and dining area, a stunning full-width first-floor reception room flooded with natural light, and a dedicated media room on the lower ground floor. There are three generously sized bedrooms, each benefiting from excellent built-in storage.



Location

Sirdar Road enjoys a prime position overlooking Avondale Park and is ideally located for the superb selection of restaurants, shops, and transport links found in Notting Hill, Holland Park, and the Westfield Shopping Centre.

Postcode region: W11

General

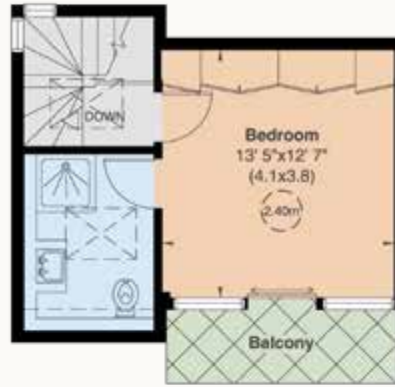
Local Authority: The Royal Borough of Kensington and Chelsea
Council Tax: Band H
EPC Rating: B
Parking: Residents' permit
Mobile coverage and broadband: Information can be found here: <https://checker.ofcom.org.uk/en-gb/mobile-coverage>

1,742 sq ft (162 sq m)
Reception room
Kitchen/dining room
3 bedrooms | 2 bathrooms
1 W.C. | Media/gym room
Principal with balcony
Freehold

Guide price £1,500,000



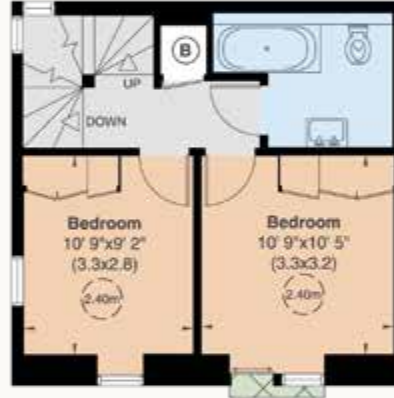
Sirdar Road, W11
 Gross internal area (approx.)
 162 Sq m (1742 Sq ft)
 For identification only, Not to Scale
 capital 020 8671 7722



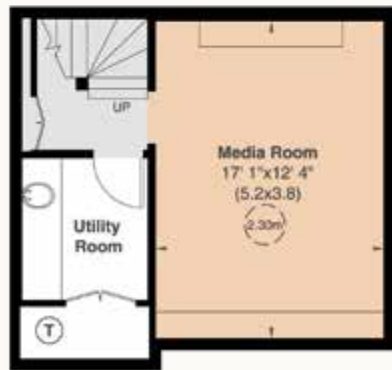
Third Floor



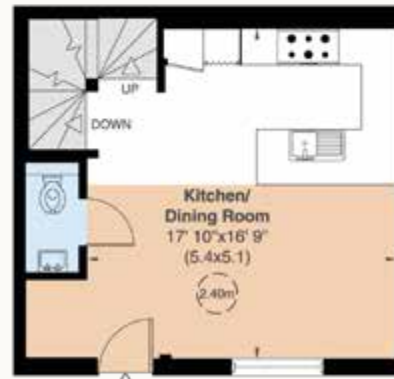
First Floor



Second Floor



Basement



Ground Floor

Strutt & Parker Notting Hill

303 Westbourne Grove, London, W11 2QA
 020 7221 1111 | nottinghill@struttandparker.com



@struttandparker struttandparker.com

**Strutt
& Parker**

Land and property. Since 1885.

IMPORTANT NOTICE: Strutt & Parker gives notice that: 1. These particulars do not constitute an offer or contract or part thereof. 2. All descriptions, photographs and plans are for guidance only and should not be relied upon as statements or representations of fact. All measurements are approximate and not necessarily to scale. Any prospective purchaser must satisfy themselves of the correctness of the information within the particulars by inspection or otherwise. 3. Strutt & Parker does not have any authority to give any representations or warranties whatsoever in relation to this property (including but not limited to planning/building regulations), nor can it enter into any contract on behalf of the Vendor. 4. Strutt & Parker does not accept responsibility for any expenses incurred by prospective purchasers in inspecting properties which have been sold, let or withdrawn. 5. We are able to refer you to SPF Private Clients Limited ("SPF") for mortgage broking services, and to Alexander James Interiors ("AJI"), an interior design service. Should you decide to use the services of SPF, we will receive a referral fee from them of 25% of the aggregate of the fee paid to them by you for the arrangement of a mortgage and any fee received by them from the product provider. Should you decide to use the services of AJI, we will receive a referral fee of 10% of the net income received by AJI for the services they provide to you. 6. If there is anything of particular importance to you, please contact this office and Strutt & Parker will try to have the information checked for you. Strutt & Parker is a trading style of BNP Paribas Real Estate Advisory & Property Management UK Limited. Template by Fourwalls. Photographs taken April 2026. Particulars prepared April 2026.