

Sloane Court East
Chelsea



Strutt
& Parker

Land and property. Since 1885.



A well-organised and efficient one-bedroom flat on the third floor (with lift) in this well-maintained purpose-built block with resident porter

Description

This well-presented property is compact and neat, ideal as a London pied-à-terre for those living in the country or abroad. The resident porter is on hand Monday to Friday.

Location

The flat is ideally located for all the extensive shopping, many restaurants, and general amenities of Sloane Square, Sloane Street and Kings Road. Added to this, Battersea Park is within easy reach. The nearest underground station is Sloane Square.

Accommodation & Amenities

- Entrance hall
- Reception/dining room
- Double bedroom
- Bathroom
- Kitchen
- Utility room
- Lift
- Resident porter
- Communal central heating and hot water

Terms

Tenure: Leasehold with approximately 998 years remaining plus share of freehold

EPC: Rating C

Local Authority: Royal Borough of Kensington & Chelsea

Ground Rent: Peppercorn

Council Tax: Band H

Service Charge: Representing 3.6139% of the whole, currently amounting to approximately £5,000 per annum, to include communal central heating and hot water, contribution to reserve fund, maintenance of lift and insurance of the building

Parking: Residents' permit

Broadband: Installed at the property

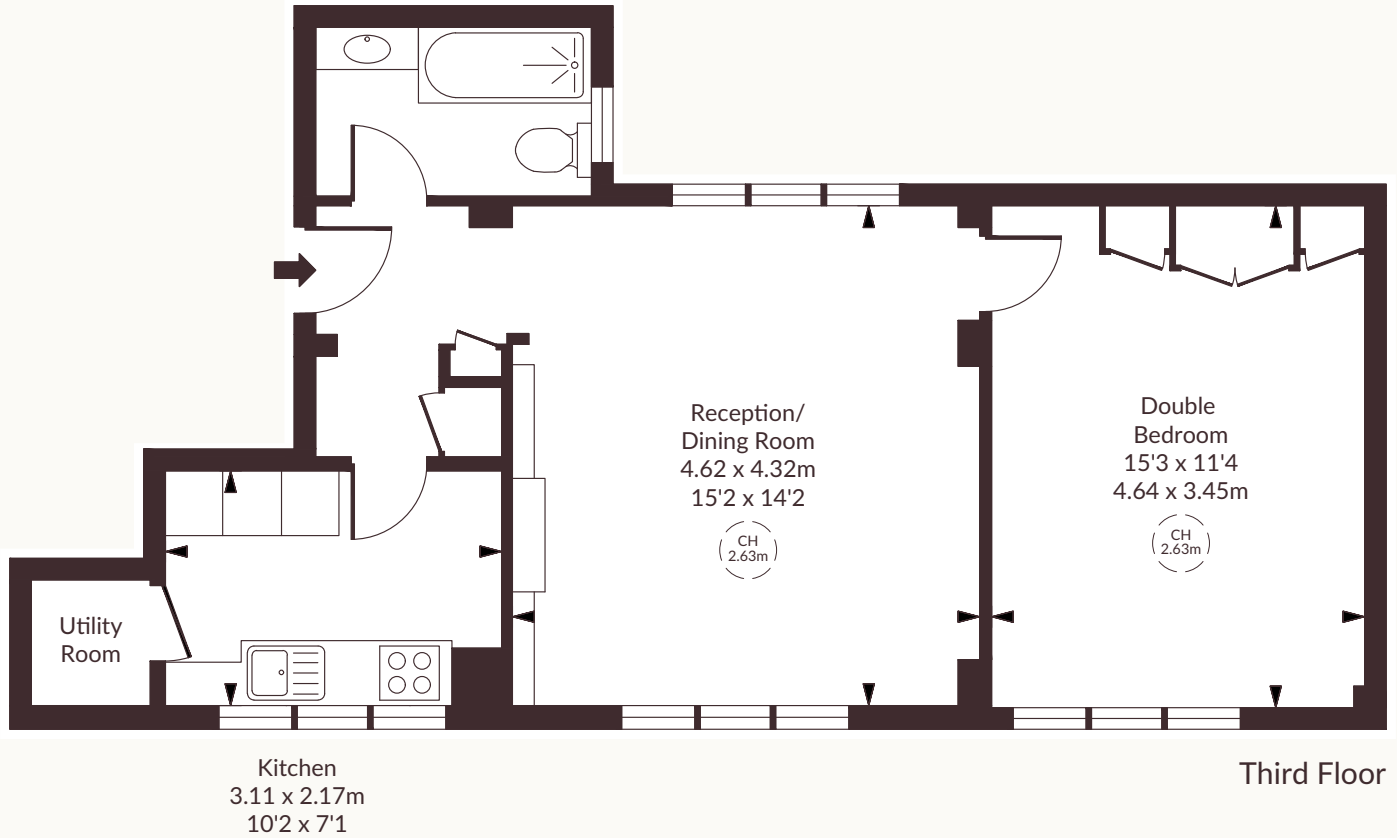
Asking Price: £950,000 subject to contract, to include blinds, curtains, all kitchen and utility equipment

It should be noted four penthouses have been built at the top of the building which are nearing completion, at which time they will be sold. Completion of this project is anticipated to be end June 2026. As part of this redevelopment, a new lift has been installed and common parts are being completely redecorated to a very high standard, all paid for by the developers.



Approximate Gross
Internal Area
576 sq ft / 53.55 sq m

CH: Ceiling height
For illustrative purposes only, not to scale. The
position and size of doors, windows, appliances
and other features are approximate only.
This plan has been supplied to The
Brochure by Strutt & Parker



Strutt & Parker Chelsea

43 Cadogan Street, London SW3 2PR

+44 (0)20 7225 3866 chelsea@struttandparker.com



@struttandparker struttandparker.com

IMPORTANT NOTICE: Strutt & Parker gives notice that: 1. These particulars do not constitute an offer or contract or part thereof. 2. All descriptions, photographs and plans are for guidance only and should not be relied upon as statements or representations of fact. All measurements are approximate and not necessarily to scale. Any prospective purchaser must satisfy themselves of the correctness of the information within the particulars by inspection or otherwise. 3. Strutt & Parker does not have any authority to give any representations or warranties whatsoever in relation to this property (including but not limited to planning/building regulations), nor can it enter into any contract on behalf of the Vendor. 4. Strutt & Parker does not accept responsibility for any expenses incurred by prospective purchasers in inspecting properties which have been sold, let or withdrawn. 5. We are able to refer you to SPF Private Clients Limited ("SPF") for mortgage broking services, and to Alexander James Interiors ("AJI"), an interior design service. Should you decide to use the services of SPF, we will receive a referral fee from them of 25% of the aggregate of the fee paid to them by you for the arrangement of a mortgage and any fee received by them from the product provider. Should you decide to use the services of AJI, we will receive a referral fee of 10% of the net income received by AJI for the services they provide to you. 6. If there is anything of particular importance to you, please contact this office and Strutt & Parker will try to have the information checked for you. Strutt & Parker is a trading style of BNP Paribas Real Estate Advisory & Property Management UK Limited. Photographs taken September 2022. Particulars prepared May 2026. 09/06/26 S&P-260512B-07-GG-FOC

THE
BROCHURE
MIX
PAPER

