



Sloane Court West, Chelsea SW3

STRUTT & PARKER
BNP PARIBAS GROUP 

Sloane Court West, Chelsea SW3

An outstanding lateral apartment in an historic Chelsea mansion block

Bay window | Reception room | 2 Bedrooms
2 Bathrooms | Separate kitchen | Refurbished
Lift | Porter | Communal gardens | Private
storage unit | EPC rating D

An elegant and meticulously refurbished apartment of over 1,200 sq.ft of calm, lateral space situated on the 3rd floor of this highly sought after and historic mansion block.

The quality of the apartment speaks for itself with marble in the bathrooms, a hand selected parquet floor and quality fittings and bespoke joinery throughout.

This flat is enviably located in the more desirable middle terrace of Sloane Court West and away from the Royal Hospital Road, it further benefits by having the use of the wonderful communal gardens, an onsite porter, lift and private storage unit in the basement.

Terms

Tenure: Leasehold expiring 17/12/2105

Service Charge: Circa £12k per annum

Council Tax: Band G

Local Authority: The Royal Borough of Kensington and Chelsea

Asking Price: £2,500,000





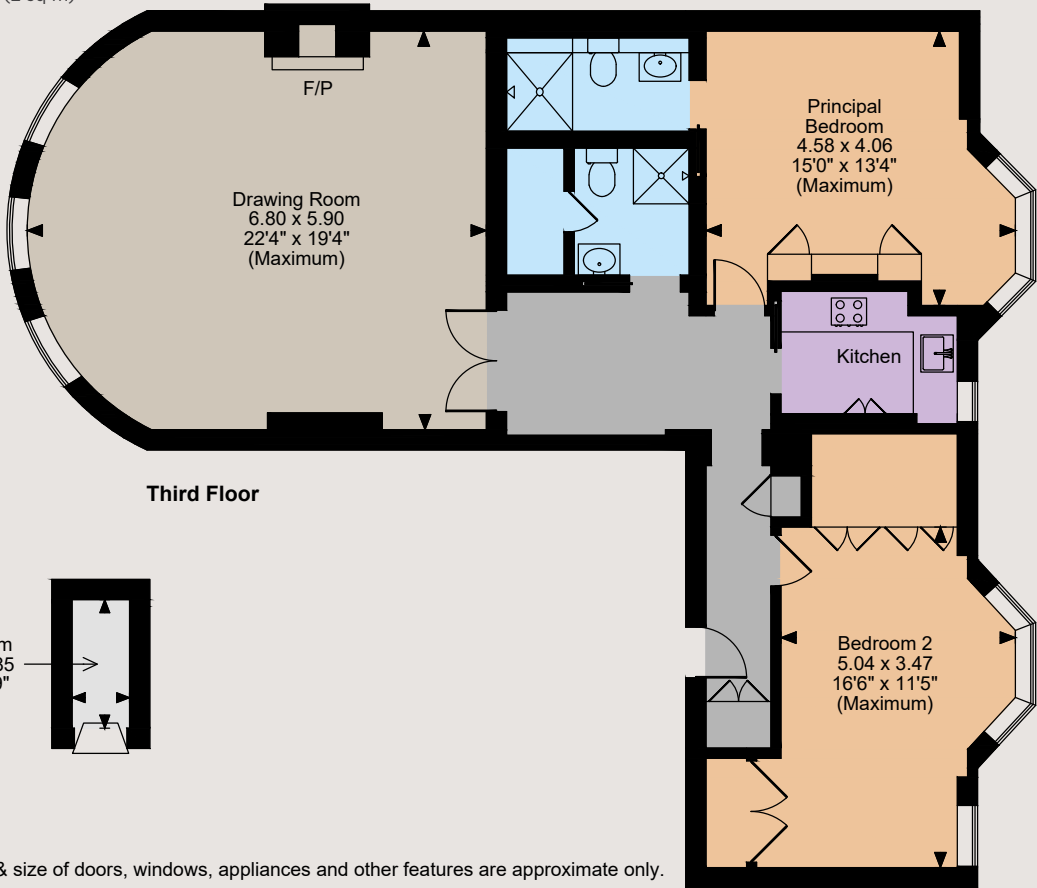


Location

Sloane Court West is ideally located just moments from Sloane Square, Duke of York Square and the King's Road, offering easy access to all the shops, bars and restaurants that they have to offer. The open spaces of Burton Court and the Royal Hospital are on the door step and Battersea Park is easily accessed over Chelsea bridge.

Sloane Square Underground Station (Circle and District Lines) is 0.3 miles away.

Sloane Court West SW3
Main Flat internal area 1,137 sq ft (106 sq m)
Storeroom internal area 17 sq ft (2 sq m)



The position & size of doors, windows, appliances and other features are approximate only.
© ehouse. Unauthorised reproduction prohibited. Drawing ref. dig/8540849/KKM

Knightsbridge & Belgravia

66 Sloane Street, London SW1X 9SH

020 7235 9959

knightsbridge@struttandparker.com

IMPORTANT NOTICE: Strutt & Parker gives notice that: 1. These particulars do not constitute an offer or contract or part thereof. 2. All descriptions, photographs and plans are for guidance only and should not be relied upon as statements or representations of fact. All measurements are approximate and not necessarily to scale. Any prospective purchaser must satisfy themselves of the correctness of the information within the particulars by inspection or otherwise. 3. Strutt & Parker does not have any authority to give any representations or warranties whatsoever in relation to this property (including but not limited to planning/building regulations), nor can it enter into any contract on behalf of the Vendor. 4. Strutt & Parker does not accept responsibility for any expenses incurred by prospective purchasers in inspecting properties which have been sold, let or withdrawn. 5. We are able to refer you to SPF Private Clients Limited ("SPF") for mortgage broking services, and to Alexander James Interiors ("AJI"), an interior design service. Should you decide to use the services of SPF, we will receive a referral fee from them of 25% of the aggregate of the fee paid to them by you for the arrangement of a mortgage and any fee received by them from the product provider. Should you decide to use the services of AJI, we will receive a referral fee of 10% of the net income received by AJI for the services they provide to you. 6. If there is anything of particular importance to you, please contact this office and Strutt & Parker will try to have the information checked for you. Photographs taken March 2023. Particulars prepared March 2023. Strutt & Parker is a trading style of BNP Paribas Real Estate Advisory & Property Management UK Limited.