

First Floor Flat, 3 Smith Street,  
Chelsea



Strutt  
& Parker

Land and property. Since 1885.

## A superb and thoughtfully renovated first floor Chelsea apartment.

This charming apartment has been the subject of a meticulous and sympathetic refurbishment, cleverly utilising the space available to create a truly wonderful property.

With 3.3m high ceilings and with super heritage approved double glazed sash windows the light in the property is sensational.

For the colder nights, a charming gas fire ensures this fabulous property always feels like home.



### Location

Smith Street is a well-known Chelsea address running north/south from the King's Road to Burton Court and the Royal Hospital.

This wonderful property can be found on the northern end of the street and so ideal for all the boutique shops bars and restaurants that this vibrant area has to offer.

Sloane Square underground station (Circle and District Line) is 0.5 miles away.

Postcode region: SW3

### General

Local Authority: Royal Borough of Kensington and Chelsea.

Council Tax: Band E

EPC Rating: F

Service charge: £850 pa

Ground rent: £50 pa

Lease expiring 25/12/2110

Mobile and Broadband checker: Information can be found here <https://checker.ofcom.org.uk/en-gb/>

366 sq ft (34 sq m)

1 bedroom

1 reception room

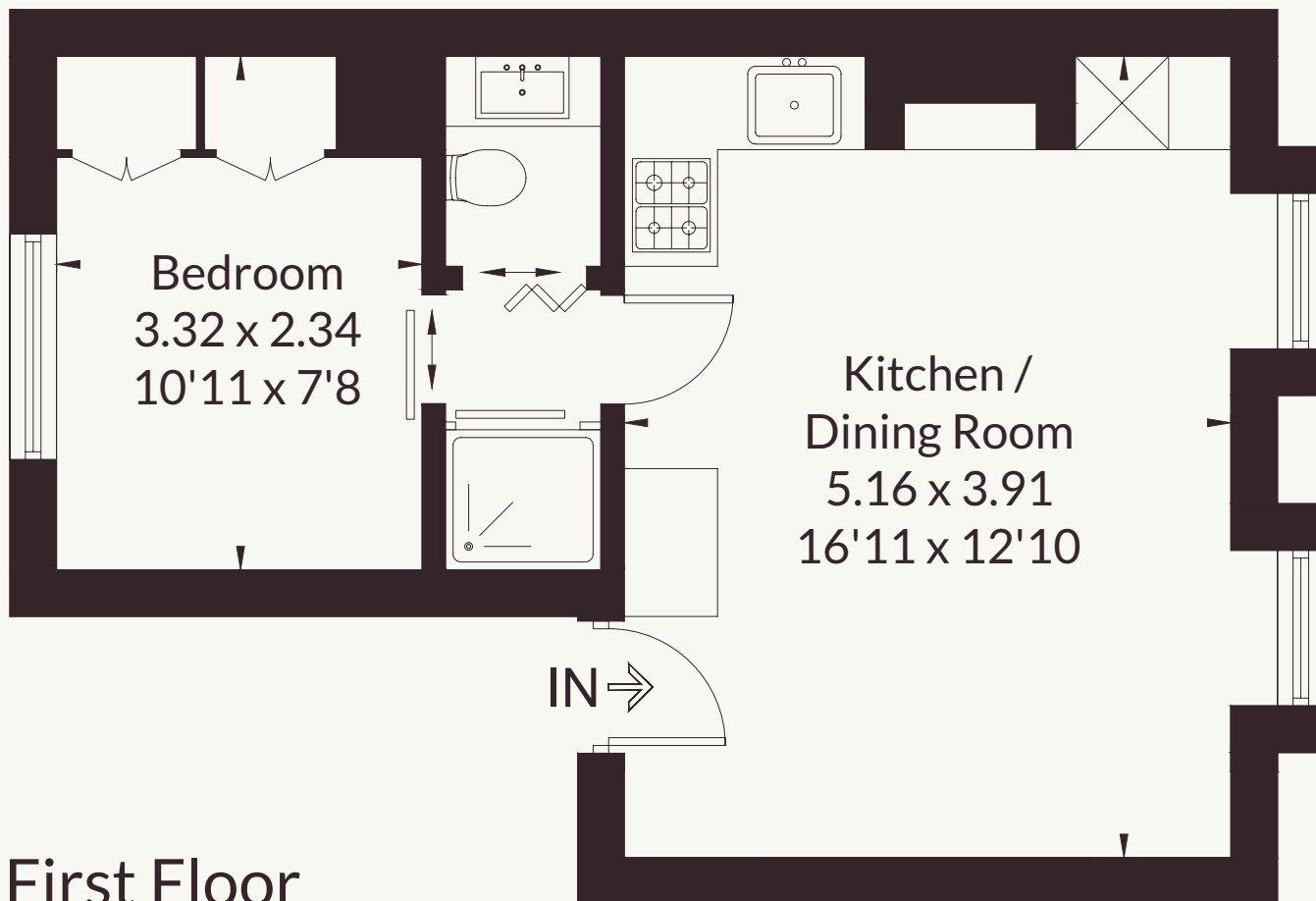
First floor

Recently renovated

Asking Price £825,000



Approximate Floor Area = 34.0 sq m / 366 sq ft



## First Floor

This floor plan has been drawn in accordance with RICS Property Measurement 2nd edition. All measurements, including the floor area, are approximate and for illustrative purposes only. @fourwalls-group.com #109454

### Strutt & Parker Chelsea

43 Cadogan Street, London, SW3 2PR  
02036214788 | chelsea@struttandparker.com



@struttandparker struttandparker.com

IMPORTANT NOTICE: Strutt & Parker gives notice that: 1. These particulars do not constitute an offer or contract or part thereof. 2. All descriptions, photographs and plans are for guidance only and should not be relied upon as statements or representations of fact. All measurements are approximate and not necessarily to scale. Any prospective purchaser must satisfy themselves of the correctness of the information within the particulars by inspection or otherwise. 3. Strutt & Parker does not have any authority to give any representations or warranties whatsoever in relation to this property (including but not limited to planning/building regulations), nor can it enter into any contract on behalf of the Vendor. 4. Strutt & Parker does not accept responsibility for any expenses incurred by prospective purchasers in inspecting properties which have been sold, let or withdrawn. 5. We are able to refer you to SPF Private Clients Limited ("SPF") for mortgage broking services, and to Alexander James Interiors ("AJI"), an interior design service. Should you decide to use the services of SPF, we will receive a referral fee from them of 25% of the aggregate of the fee paid to them by you for the arrangement of a mortgage and any fee received by them from the product provider. Should you decide to use the services of AJI, we will receive a referral fee of 10% of the net income received by AJI for the services they provide to you. 6. If there is anything of particular importance to you, please contact this office and Strutt & Parker will try to have the information checked for you. Strutt & Parker is a trading style of BNP Paribas Real Estate Advisory & Property Management UK Limited. Template by Fourwalls. Photographs taken May 2026. Particulars prepared May 2026.

