

South Eaton Place

BELGRAVIA SW1



1 South Eaton Place
is a handsome
and substantial
stucco-fronted four/
five-bedroom freehold
house situated
on the corner of
South Eaton Place and
Eaton Mews West.



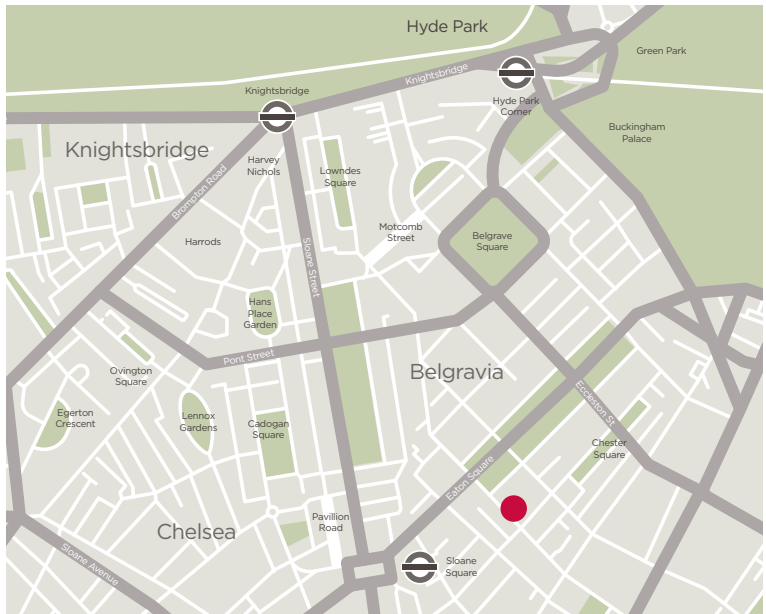
This Grade II listed property with portico extends to some 3,732 sq ft and provides generous accommodation and excellent volume throughout. This includes a super dining room with 3.34m ceiling height and a classic first floor drawing room with 3.36m ceiling height.

Located in this prime London address, in the heart of the Belgravia Conservation Area, this substantial house has pretty views to the rear over the cobbled Eaton Mews West and over roof tops towards beautiful St Michael's Church in Chester Square.

South Eaton Place is also eligible upon application for access to Belgrave Square gardens.

Accommodation

- Entrance hall
- 20'6 x 13'1 Dining room
- 34' x 17'6 First floor drawing room
- Kitchen/breakfast room
- 17'6 x 15'1 Principal bedroom with en-suite dressing area and bathroom
- Bedroom two with en-suite bathroom
- Bedroom three with en-suite bathroom
- Bedroom four with en-suite bathroom
- 22'9 x 18' Office/study/games room/occasional bedroom five
- Large library landing
- Conservatory/study
- Kitchenette
- Laundry room
- Two cloakrooms
- Two under-pavement vaults
- Separate street entrance



Location

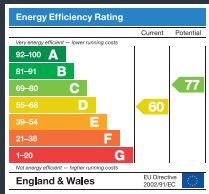
South Eaton Place is a highly sought-after Belgravia address with a wonderful array of local amenities and boutiques nearby; including Elizabeth Street, Pimlico Green, Kings Road and Sloane Square, with the renowned international fashion houses on Sloane Street and in Knightsbridge beyond.

Furthermore, excellent schools are in close proximity including: Garden House, Eaton House, Eaton Square, Francis Holland, The Knightsbridge School, Sussex House and Hill House.

Sloane Square underground is 0.2 miles away. Victoria mainline and underground stations are 0.5 miles away.







Approximate Gross Internal Area
3,613 sq ft / 335.67 sq m
excluding vaults

Vaults Area
119 sq ft / 11.06 sq m

Total Approximate Gross Internal Area
3,732 sq ft / 346.73 sq m

Tenure
Freehold

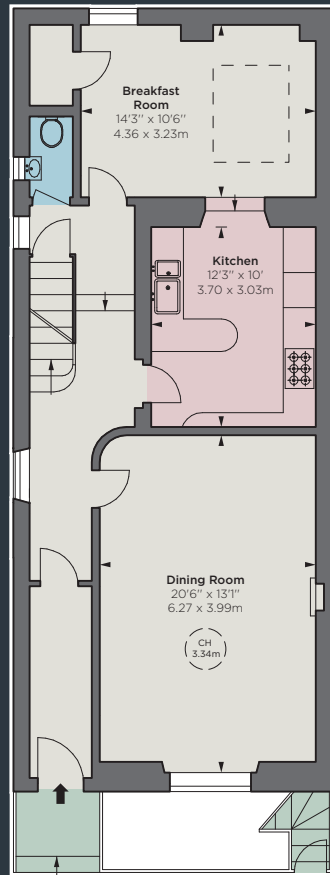
Local Authority
City of Westminster

Council Tax
Band H

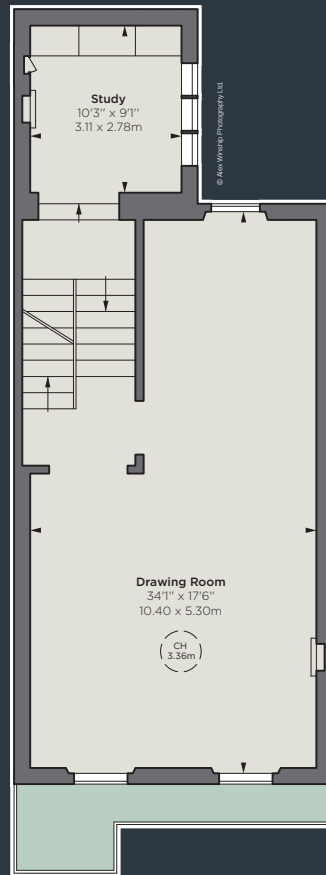
Asking Price
£6,950,000



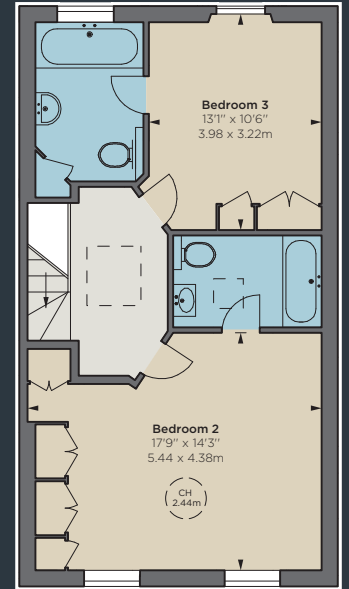
LOWER GROUND FLOOR



RAISED GROUND FLOOR



FIRST FLOOR



THIRD FLOOR



SECOND FLOOR

IMPORTANT NOTICE: Strutt & Parker gives notice that: 1. These particulars do not constitute an offer or contract or part thereof. 2. All descriptions, photographs and plans are for guidance only and should not be relied upon as statements or representations of fact. All measurements are approximate and not necessarily to scale. Any prospective purchaser must satisfy themselves of the correctness of the information within the particulars by inspection or otherwise. 3. Strutt & Parker does not have any authority to give any representations or warranties whatsoever in relation to this property (including but not limited to planning/building regulations), nor can it enter into any contract on behalf of the Vendor. 4. Strutt & Parker does not accept responsibility for any expenses incurred by prospective purchasers in inspecting properties which have been sold, let or withdrawn. 5. We are able to refer you to SPF Private Clients Limited ("SPF") for mortgage broking services, and to Alexander James Interiors ("AJI"), an interior design service. Should you decide to use the services of SPF, we will receive a referral fee from them of 25% of the aggregate of the fee paid to them by you for the arrangement of a mortgage and any fee received by them from the product provider. Should you decide to use the services of AJI, we will receive a referral fee of 10% of the net income received by AJI for the services they provide to you. 6. If there is anything of particular importance to you, please contact this office and Strutt & Parker will try to have the information checked for you. Photographs taken March 2024. Particulars prepared April 2024. Strutt & Parker is a trading style of BNP Paribas Real Estate Advisory & Property Management UK Limited. 04/04/24S&P-240428-06-MS

Sloane Street

66 Sloane Street, London SW1X 9SH

+44 (0)20 7235 9959

knightsbridge@struttandparker.com
struttandparker.com

[f/struttandparker](https://www.facebook.com/struttandparker)

Over 45 offices across England and Scotland,
including Prime Central London

For the finer things in property.

**STRUTT
& PARKER**

BNP PARIBAS GROUP