



8 South End Row,
Kensington, W8

STRUTT & PARKER
BNP PARIBAS GROUP 

8 South End Row, Kensington, W8

An immaculate and interior designed five bedroom family house occupying approximately 2,430 sq ft with the benefit of a double garage, a patio and access to a communal garden. The house has the advantage of excellent entertaining space including a lovely first floor reception room as well as a ground floor kitchen breakfast room with access to a west facing patio garden which leads out to the communal garden.

South End Row is situated just south of Kensington High Street and therefore benefits from the excellent shopping and transport facilities of the area. The green open spaces of Kensington Gardens are nearby.

Entrance hall | Kitchen/breakfast room | Family room
Reception room | Principal bedroom with en suite
shower room | Four further bedrooms | Two further
bathrooms | Shower room | Cloakroom | Utility room
West facing patio | West facing balcony
Double garage | EPC Rating C

Terms

Tenure: Freehold

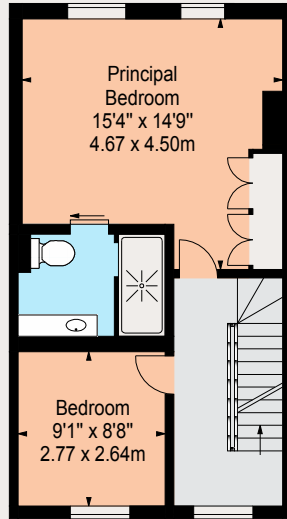
Local Authority: The Royal Borough of Kensington and Chelsea

Price: Upon Application

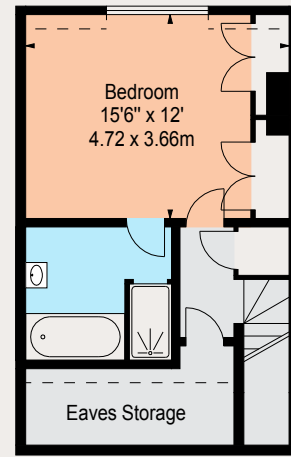




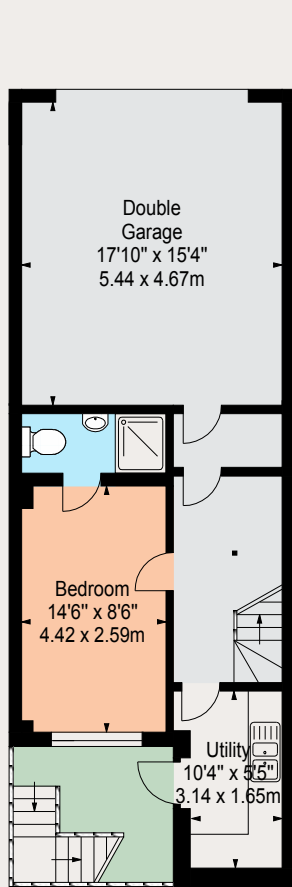
Approx. Gross Internal Area
 2,430 sq ft (225.75 sq m)
 (Including Garage & Eaves Storage)
 Garage - 273 sq ft (25.36 sq m)
 Eaves Storage - 58 sq ft (5.38 sq m)
 Area's Under 1.5m - 45 sq ft (4.18 sq m)
 Floorplan by BKR Floorplans



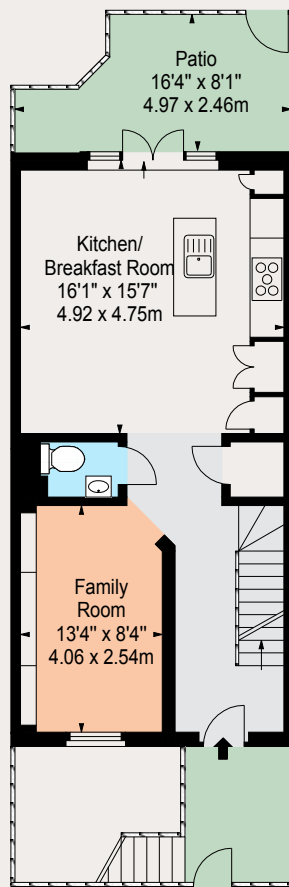
Second Floor



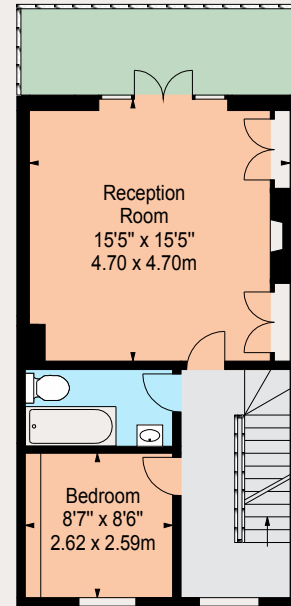
Third Floor



Lower Ground Floor



Ground Floor



First Floor

IMPORTANT NOTICE

Strutt & Parker gives notice that: 1. These particulars do not constitute an offer or contract or part thereof. 2. All descriptions, photographs and plans are for guidance only and should not be relied upon as statements or representations of fact. All measurements are approximate and not necessarily to scale. Any prospective purchaser must satisfy themselves of the correctness of the information within the particulars by inspection or otherwise. 3. Strutt & Parker does not have any authority to give any representations or warranties whatsoever in relation to this property (including but not limited to planning/building regulations), nor can it enter into any contract on behalf of the Vendor. 4. Strutt & Parker does not accept responsibility for any expenses incurred by prospective purchasers in inspecting properties which have been sold, let or withdrawn. 5. We are able to refer you to SPF Private Clients Limited ("SPF") for mortgage broking services, and to Alexander James Interiors ("AJI"), an interior design service. Should you decide to use the services of SPF, we will receive a referral fee from them of 25% of the aggregate of the fee paid to them by you for the arrangement of a mortgage and any fee received by them from the product provider. Should you decide to use the services of AJI, we will receive a referral fee of 10% of the net income received by AJI for the services they provide to you. 6. If there is anything of particular importance to you, please contact this office and Strutt & Parker will try to have the information checked for you. Photographs taken December 2020. Particulars prepared December 2020. Strutt & Parker is a trading style of BNP Paribas Real Estate Advisory & Property Management UK Limited.

Kensington

103 Kensington Church Street, London W8 7LN

020 7938 3666

kensington@struttandparker.com

STRUTT & PARKER

BNP PARIBAS GROUP

/struttandparker

@struttandparker

struttandparker.com

60 Offices across England and Scotland, including prime Central London

OnTheMarket.com