



20 St Dunstan's Terrace, Canterbury, Kent

For the finer things in property.

**STRUTT
& PARKER**

BNP PARIBAS GROUP 

20 St Dunstan's Terrace Canterbury, Kent CT2 8AX

A handsome Grade II listed townhouse in a sought-after Canterbury setting, within easy reach of Canterbury West station

Canterbury West station 0.4 mile (London St Pancras from 54 minutes), Canterbury city centre 0.5 mile, A2 1.5 miles, M2 (Junction 7) 6.7 miles, Ashford 15.2 miles, Port of Dover 18.9 miles, Eurotunnel 19 miles

Reception hall | Drawing room | Sitting/dining room | Garden room | Kitchen | Utility cupboard Store | Cloakroom | Principal bedroom with en suite shower room | 3 Further bedrooms Study/bedroom 5 | Family bathroom | Garage Gardens | EPC rating D

The property

20 St Dunstan's Terrace is a fine Grade II listed townhouse on a highly sought-after residential street just half a mile from Canterbury city centre. Set in one of the prettiest terraces in the city, the house dates from the 1830s and is of white rendered elevations with shuttered sash windows and an elegant first-floor balcony. Inside there are up to five bedrooms and well-appointed reception rooms arranged across four levels.

Steps rise to the front door where the ground floor has a sitting or dining room at the front with a large, bow window and a fireplace fitted with a log burner. The adjoining kitchen has fitted units, a split Butler sink and space for a range cooker. At the back of the house steps lead to a bright garden room with two sets of French doors opening to a terrace.

A graceful staircase rises through the house. On the first floor, the well-proportioned drawing room to the front occupies the full width of the house and is flooded with light through full height sash windows which open to the balcony. A cast-iron open fireplace provides a focal point.

There is one double bedroom on the first floor as well as the large family bathroom set off a generous landing area. A further two bedrooms are found on the second floor, including the principal bedroom with its en suite shower room.

The lower ground floor provides a further bedroom, as well as a study, which could be used as a fifth bedroom if required. There is also a cloakroom.

Outside

20 St Dunstan's Terrace is set behind wrought iron railings with a gate opening to a path and steps to the front door with a semi-circular fanlight above.

The garden to the rear is walled, laid to lawn with a flower bed along one side. Terraces sit next to the garden room and to the far end of the garden. A gate opens onto New Street and the garage. Further parking is available in marked bays along St Dunstan's Terrace for resident permit holders.

Location

The property is situated close to the heart of the city and is within easy reach of the King's Mile, a mall of boutique-style shops, cafés, eateries, bars and public houses, and the High Street with its array of independent retailers and major stores, together with excellent dining and cultural amenities including theatres and cinemas. The city offers a range of well-regarded schools in both state and independent sectors, including the Simon Langton grammar schools, The King's schools, St Edmund's School and Kent College.

Canterbury has two stations offering services to London, with the High-Speed train service from Canterbury West to London St Pancras taking under an hour. The nearby A2 provides direct access to the M2 and national motorway network. The Port of Dover and Eurotunnel provide regular services to the Continent.





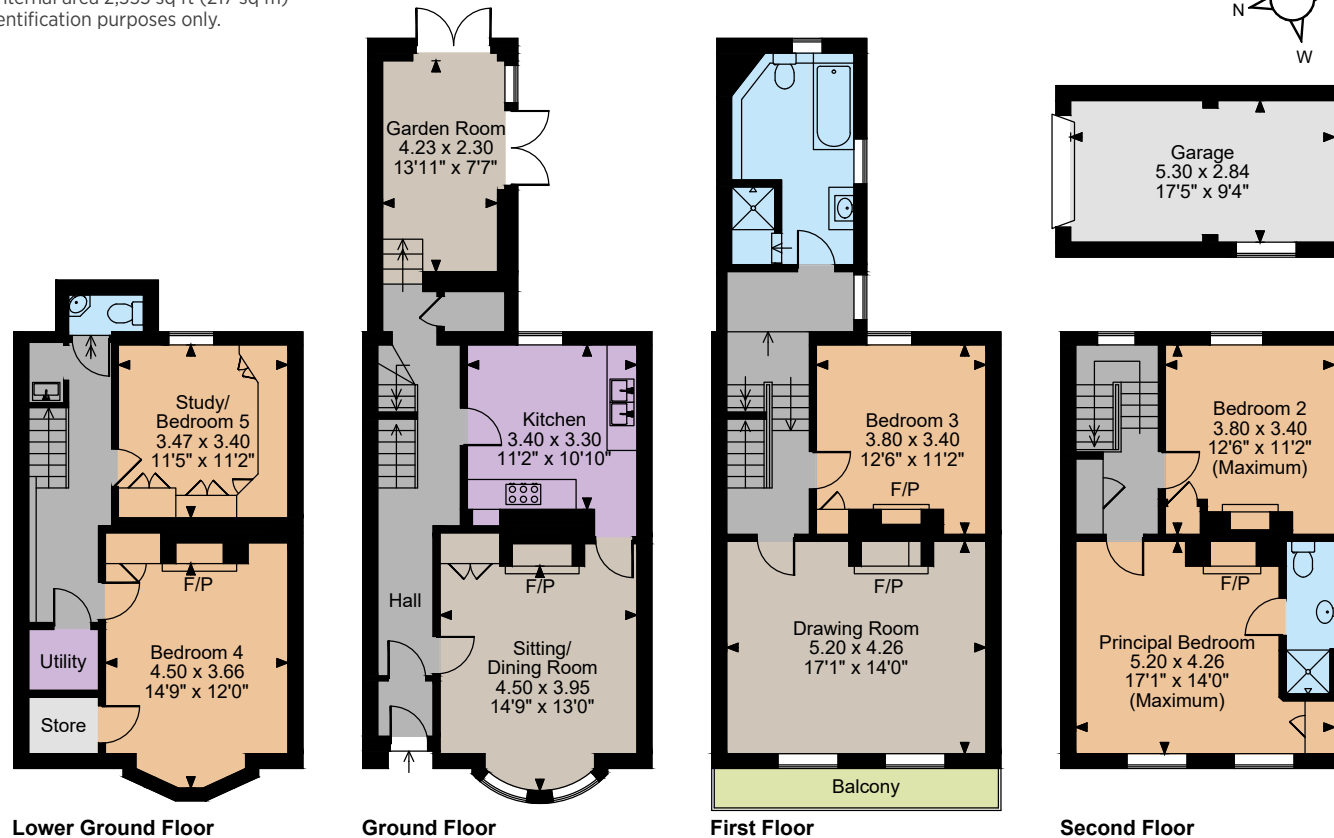








St Dunstons Terrace, Canterbury
 Main House internal area 2,173 sq ft (202 sq m)
 Garage internal area 162 sq ft (15 sq m)
 Balcony external area = 48 sq ft (5 sq m)
 Total internal area 2,335 sq ft (217 sq m)
 For identification purposes only.



Directions

From M2 (Junction 7): Exit and take the A2 towards Canterbury. After approximately 5 miles exit to the A28 to Canterbury and continue to a roundabout then take the first exit into London Road. Take the third turn on the right into St Dunstan's Terrace where no 20 will be found on the left.

What3Words: ///handed.trade.taken brings you to the property.

General

Local Authority: Canterbury City Council
Services: All mains services; gas heating
Mobile coverage/broadband: Information can be found here <https://checker.ofcom.org.uk/engb/mobile-coverage>
Council Tax: Band F
Tenure: Freehold
Guide Price: £770,000

Canterbury

2 St Margaret's Street, Canterbury, Kent CT1 2SL

01227 473700

canterbury@struttandparker.com
 struttandparker.com

The position & size of doors, windows, appliances and other features are approximate only.

© ehouse. Unauthorised reproduction prohibited. Drawing ref. dig/8626657/SS

IMPORTANT NOTICE: Strutt & Parker gives notice that: 1. These particulars do not constitute an offer or contract or part thereof. 2. All descriptions, photographs and plans are for guidance only and should not be relied upon as statements or representations of fact. All measurements are approximate and not necessarily to scale. Any prospective purchaser must satisfy themselves of the correctness of the information within the particulars by inspection or otherwise. 3. Strutt & Parker does not have any authority to give any representations or warranties whatsoever in relation to this property (including but not limited to planning/building regulations), nor can it enter into any contract on behalf of the Vendor. 4. Strutt & Parker does not accept responsibility for any expenses incurred by prospective purchasers in inspecting properties which have been sold, let or withdrawn. 5. We are able to refer you to SPF Private Clients Limited ("SPF") for mortgage broking services, and to Alexander James Interiors ("AJI"), an interior design service. Should you decide to use the services of SPF, we will receive a referral fee from them of 25% of the aggregate of the fee paid to them by you for the arrangement of a mortgage and any fee received by them from the product provider. Should you decide to use the services of AJI, we will receive a referral fee of 10% of the net income received by AJI for the services they provide to you. 6. If there is anything of particular importance to you, please contact this office and Strutt & Parker will try to have the information checked for you. Photographs taken November 2024. Particulars revised May 2026. Strutt & Parker is a trading style of BNP Paribas Real Estate Advisory & Property Management UK Limited

Over 50 offices across England and Scotland,
 including Prime Central London

