



St. Mark's Road, North Kensington, W10

For the finer things in property.

**STRUTT
& PARKER**

BNP PARIBAS GROUP

St. Mark's Road, North Kensington, W10

A well-presented and spacious two bedroom flat with impressive ceiling height.

Comprised over the raised ground floor of this handsome, semi-detached period building, the flat benefits from an abundance of natural light and storage. There are two bedrooms plus study, a family bathroom and guest WC.

St. Mark's Road is a wide, tree lined address which runs north of Blenheim Crescent. It benefits from the excellent restaurants, shopping and transport facilities of Golbourne Road, Portobello Road, Westbourne Grove and Holland Park. Ladbroke Grove (Circle and Hammersmith & City Lines) underground station is also nearby.

Entrance hall | Kitchen/reception room | Two bedrooms | Study | Bathroom | Mezzanine storage | Guest WC | EPC rating C

Terms

Tenure: Share of Freehold, 125 year underlying lease from 25.03.1986.

Service Charge: Approximately £1,500 pa

Council Tax: Band F

Local Authority: The Royal Borough of Kensington and Chelsea

Asking Price: £790,000



Notting Hill

303 Westbourne Grove, London, W11 2QA

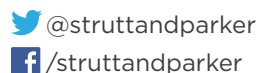
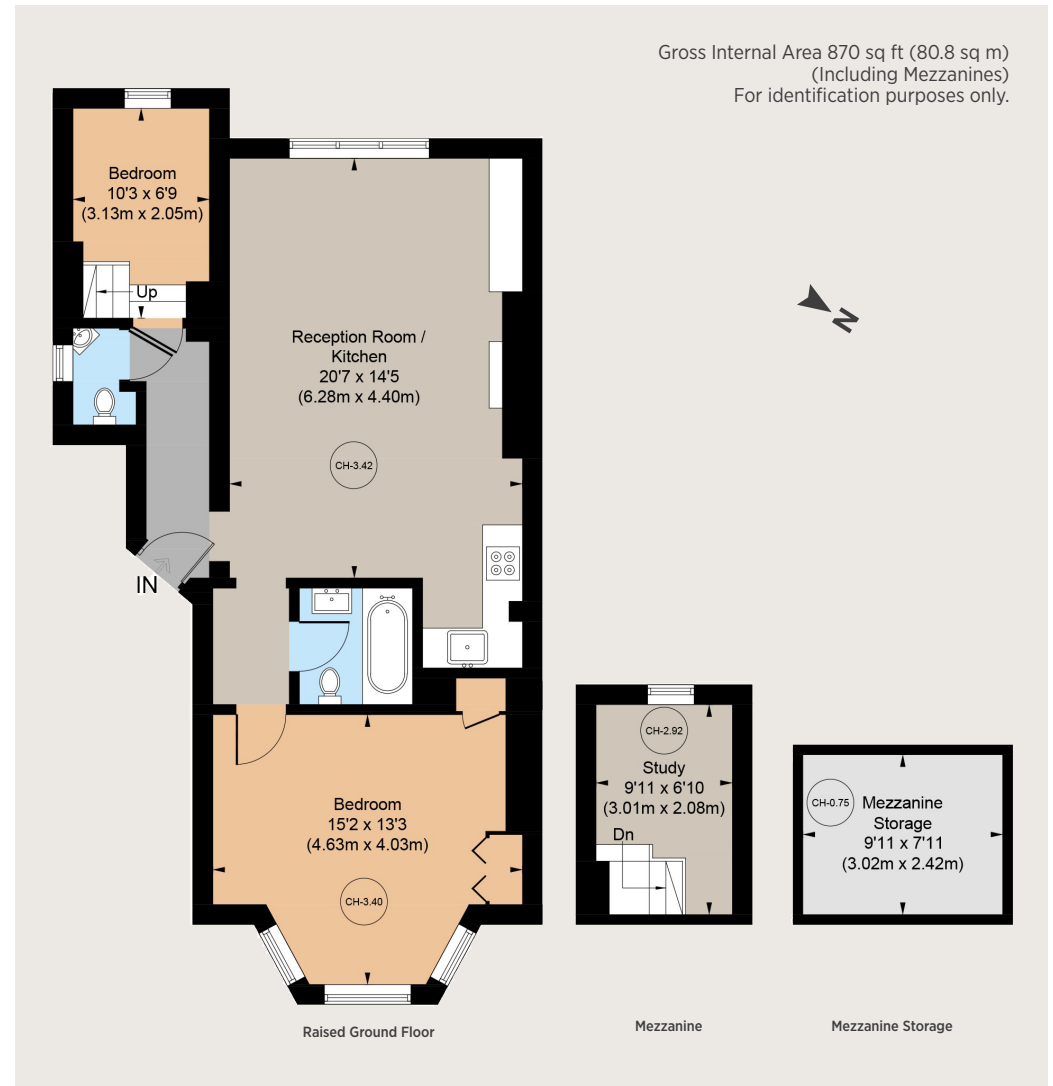
020 7221 1111

nottinghill@struttandparker.com

struttandparker.com

IMPORTANT NOTICE

Strutt & Parker gives notice that: 1. These particulars do not constitute an offer or contract or part thereof. 2. All descriptions, photographs and plans are for guidance only and should not be relied upon as statements or representations of fact. All measurements are approximate and not necessarily to scale. Any prospective purchaser must satisfy themselves of the correctness of the information within the particulars by inspection or otherwise. 3. Strutt & Parker does not have any authority to give any representations or warranties whatsoever in relation to this property (including but not limited to planning/building regulations), nor can it enter into any contract on behalf of the Vendor. 4. Strutt & Parker does not accept responsibility for any expenses incurred by prospective purchasers in inspecting properties which have been sold, let or withdrawn. 5. We are able to refer you to SPF Private Clients Limited ("SPF") for mortgage broking services, and to Alexander James Interiors ("AJI"), an interior design service. Should you decide to use the services of SPF, we will receive a referral fee from them of 25% of the aggregate of the fee paid to them by you for the arrangement of a mortgage and any fee received by them from the product provider. Should you decide to use the services of AJI, we will receive a referral fee of 10% of the net income received by AJI for the services they provide to you. 6. If there is anything of particular importance to you, please contact this office and Strutt & Parker will try to have the information checked for you. Photographs taken November 2023. Particulars prepared November 2023 Strutt & Parker is a trading style of BNP Paribas Real Estate Advisory & Property Management UK Limited.



Over 45 offices across England and Scotland,
including Prime Central London

For the finer things in property.

