



Walnut Court, Kensington, W8

For the finer things in property.

**STRUTT  
& PARKER**

BNP PARIBAS GROUP 



# Walnut Court, Kensington, W8

A superbly positioned, un-modernised two-bedroom, ground floor apartment, situated within the prestigious gated development of Kensington Green.

The well-balanced accommodation provides a spacious, dual-aspect reception room, separate kitchen, principal bedroom with en suite bathroom, second bedroom and a family bathroom. In addition, Kensington Green benefits from private landscaped gardens, 24-hour security, secure underground car parking and resident's gymnasium.

The development is ideally located for the shops, restaurants and transport links provided by Kensington High Street & Gloucester Road and benefits from close proximity to the open spaces of Kensington Gardens and Holland Park.

Reception | Kitchen | Hallway | Principal bedroom | En suite bathroom | Second bedroom Bathroom | Communal garden | Parking Residents' gymnasium | EPC Rating D

## Terms

**Tenure:** Leasehold, 999 years from 29th September 1991

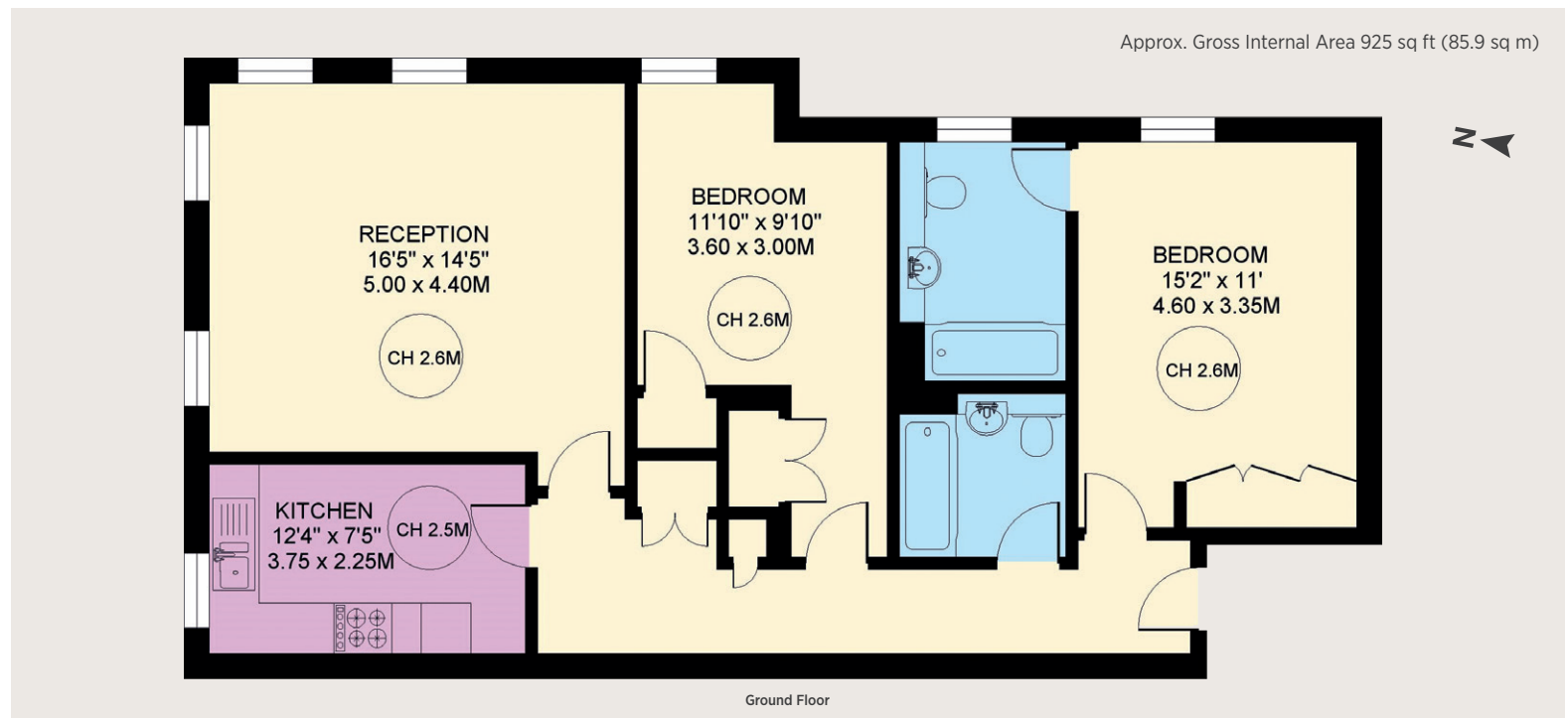
**Service Charge:** Approximately, £2,000 charged quarterly advance

**Ground Rent:** £150 pa

**Council Tax:** Band H

**Local Authority:** The Royal Borough of Kensington and Chelsea

**Asking Price:** £1,600,000



## Kensington

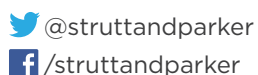
103 Kensington Church Street, London W8 7LN

**020 7938 3666**

kensington@struttandparker.com

### IMPORTANT NOTICE

Strutt & Parker gives notice that: 1. These particulars do not constitute an offer or contract or part thereof. 2. All descriptions, photographs and plans are for guidance only and should not be relied upon as statements or representations of fact. All measurements are approximate and not necessarily to scale. Any prospective purchaser must satisfy themselves of the correctness of the information within the particulars by inspection or otherwise. 3. Strutt & Parker does not have any authority to give any representations or warranties whatsoever in relation to this property (including but not limited to planning/building regulations), nor can it enter into any contract on behalf of the Vendor. 4. Strutt & Parker does not accept responsibility for any expenses incurred by prospective purchasers in inspecting properties which have been sold, let or withdrawn. 5. We are able to refer you to SPF Private Clients Limited ("SPF") for mortgage broking services, and to Alexander James Interiors ("AJI"), an interior design service. Should you decide to use the services of SPF, we will receive a referral fee from them of 25% of the aggregate of the fee paid to them by you for the arrangement of a mortgage and any fee received by them from the product provider. Should you decide to use the services of AJI, we will receive a referral fee of 10% of the net income received by AJI for the services they provide to you. 6. If there is anything of particular importance to you, please contact this office and Strutt & Parker will try to have the information checked for you. Photographs taken January 2024. Particulars prepared January 2024. Strutt & Parker is a trading style of BNP Paribas Real Estate Advisory & Property Management UK Limited.



Over 45 offices across England and Scotland,  
including Prime Central London

**For the finer things in property.**

