

St Petersburg Place

Bayswater, W2



A lateral two bedroom flat with direct lift access and a large roof terrace.



1 RECEPTION ROOM



2 BEDROOMS



2 BATHROOMS



SHARE OF FREEHOLD



833 SQ FT



**GUIDE PRICE
£1,695,000**



COMMUNAL GARDENS



RESIDENTS' PARKING



The property

Located on the second floor of a period building and set behind a charming garden, this bright two bedroom flat is presented in immaculate condition with a dual-aspect kitchen/reception room that leads onto a large roof terrace. The property also benefits from direct lift access and has a communal garden at the front of the property which is shared by the neighbouring residents.

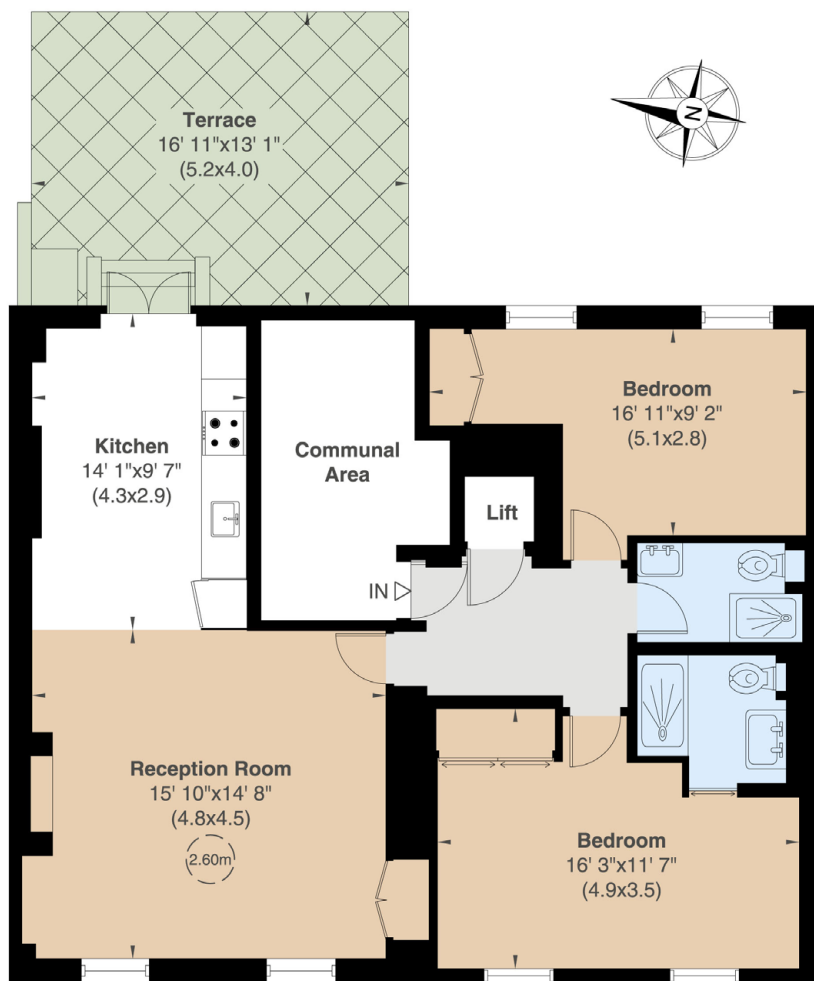


Location

St. Petersburg Place is a residential tree lined street located on the doorstep of Kensington Gardens whilst also being a short distance from Westbourne Grove and the amenities it offers. Notting Hill Gate, Queensway and Bayswater tubes are nearby.







Second Floor

Floorplans

Gross internal area 833 sq ft (77 sq m)

For identification purposes only.

General

Tenure: 1119 years from 8 July 1976, plus a share of the freehold

Local Authority: City of Westminster

Service Charge: Approximately £7,000 per annum, including a sinking fund contribution

Council Tax: Band F

EPC Rating: D

Parking: Residents' parking

Mobile coverage and broadband: Information can be found here: <https://checker.ofcom.org.uk/en-gb/mobile-coverage>

IMPORTANT NOTICE: Strutt & Parker gives notice that: 1. These particulars do not constitute an offer or contract or part thereof. 2. All descriptions, photographs and plans are for guidance only and should not be relied upon as statements or representations of fact. All measurements are approximate and not necessarily to scale. Any prospective purchaser must satisfy themselves of the correctness of the information within the particulars by inspection or otherwise. 3. Strutt & Parker does not have any authority to give any representations or warranties whatsoever in relation to this property (including but not limited to planning/building regulations), nor can it enter into any contract on behalf of the Vendor. 4. Strutt & Parker does not accept responsibility for any expenses incurred by prospective purchasers in inspecting properties which have been sold, let or withdrawn. 5. We are able to refer you to SPF Private Clients Limited ("SPF") for mortgage broking services, and to Alexander James Interiors ("AJI"), an interior design service. Should you decide to use the services of SPF, we will receive a referral fee from them of 25% of the aggregate of the fee paid to them by you for the arrangement of a mortgage and any fee received by them from the product provider. Should you decide to use the services of AJI, we will receive a referral fee of 10% of the net income received by AJI for the services they provide to you. 6. If there is anything of particular importance to you, please contact this office and Strutt & Parker will try to have the information checked for you. Photographs taken November 2025. Particulars prepared November 2025. Strutt & Parker is a trading style of BNP Paribas Real Estate Advisory & Property Management UK Limited

Notting Hill

303 Westbourne Grove, London, W11 2QA

020 7221 1111

nottinghill@struttandparker.com
struttandparker.com



@struttandparker

Over 50 offices across England and Scotland,
including Prime Central London

For the finer things in property.

