

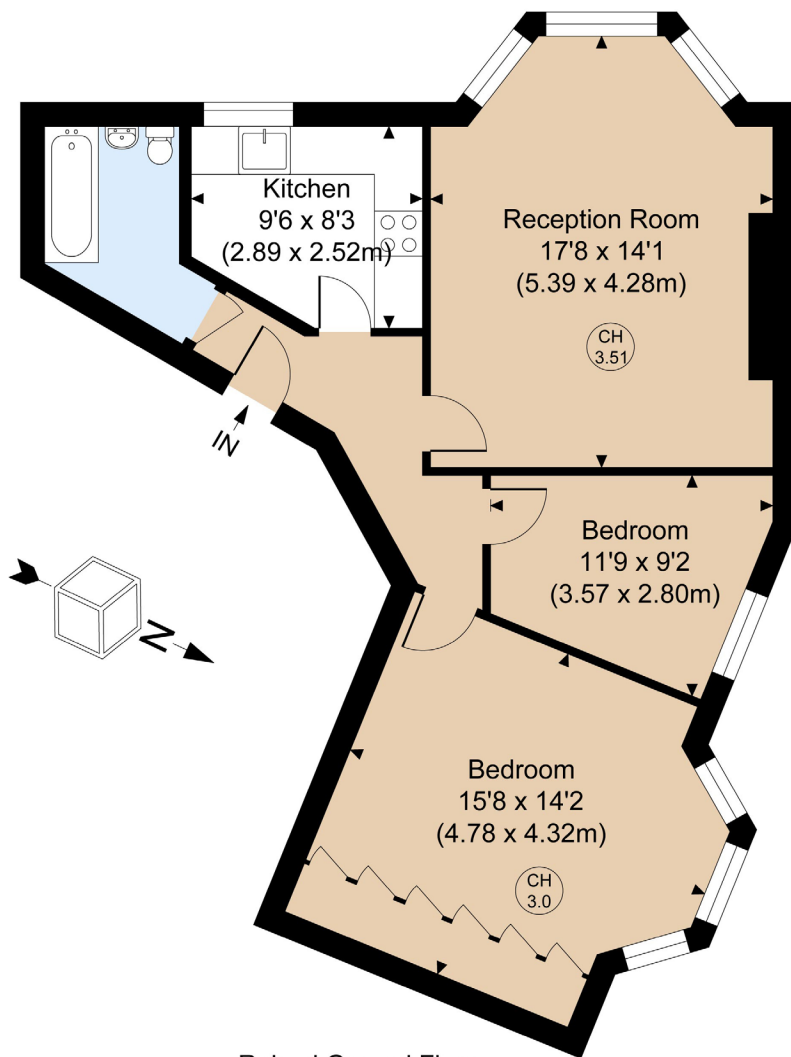
St. Quintin Avenue

London, W10



**STRUTT
& PARKER**

BNP PARIBAS GROUP



A superb two-bedroom flat on the raised ground floor of an end-of-terrace period building.

Set within an impressive Georgian building, the flat features fantastic natural light and impressive 3m high ceilings.

The reception room features a beautiful west-facing bay window, and there is a separate kitchen. The principal bedroom enjoys garden views and plentiful built in storage. There is a further bedroom and family bathroom.

St. Quintin Avenue is an attractive tree-lined address located close to the Kensington Memorial Park, Little Wormwood Scrubs Park and the amenities of Portobello Road and Westfield Shopping Centre. White City (Central line) and Latimer Road (Circle and Hammersmith & City Lines) underground stations are also nearby.

Floorplans

Gross internal area 702 sq ft (65.20 sq m)
For identification purposes only.

General

Tenure: 999 years from 07.02.3011, plus a Share of the Freehold

Local Authority: The Royal Borough of Kensington and Chelsea

Service Charge: £3,544pa

Council Tax: Band E

EPC Rating: C

Parking: Residential parking

Broadband: Available

Asking Price: £800,000

Notting Hill

303 Westbourne Grove, London, W11 2QA

020 7221 1111

nottinghill@struttandparker.com
struttandparker.com

IMPORTANT NOTICE: Strutt & Parker gives notice that: 1. These particulars do not constitute an offer or contract or part thereof. 2. All descriptions, photographs and plans are for guidance only and should not be relied upon as statements or representations of fact. All measurements are approximate and not necessarily to scale. Any prospective purchaser must satisfy themselves of the correctness of the information within the particulars by inspection or otherwise. 3. Strutt & Parker does not have any authority to give any representations or warranties whatsoever in relation to this property (including but not limited to planning/building regulations), nor can it enter into any contract on behalf of the Vendor. 4. Strutt & Parker does not accept responsibility for any expenses incurred by prospective purchasers in inspecting properties which have been sold, let or withdrawn. 5. We are able to refer you to SPF Private Clients Limited ("SPF") for mortgage broking services, and to Alexander James Interiors ("AJI"), an interior design service. Should you decide to use the services of SPF, we will receive a referral fee from them of 25% of the aggregate of the fee paid to them by you for the arrangement of a mortgage and any fee received by them from the product provider. Should you decide to use the services of AJI, we will receive a referral fee of 10% of the net income received by AJI for the services they provide to you. 6. If there is anything of particular importance to you, please contact this office and Strutt & Parker will try to have the information checked for you. Photographs taken April 2025. Particulars prepared April 2025. Strutt & Parker is a trading style of BNP Paribas Real Estate Advisory & Property Management UK Limited



@struttandparker

Over 50 offices across England and Scotland,
including Prime Central London

For the finer things in property.

**STRUTT
& PARKER**

BNP PARIBAS GROUP