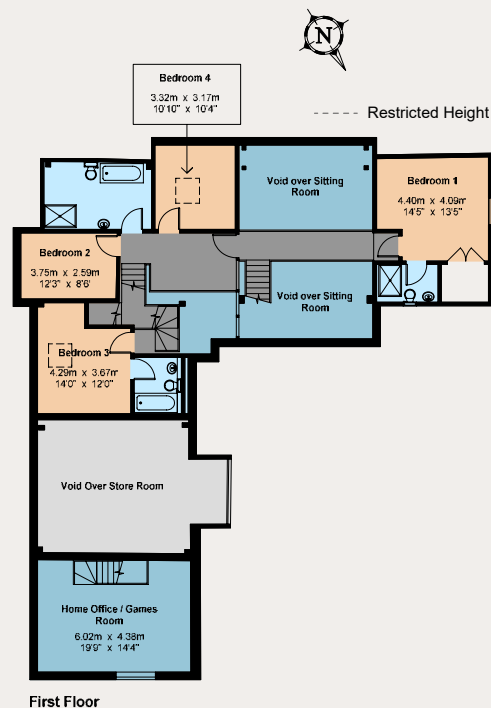
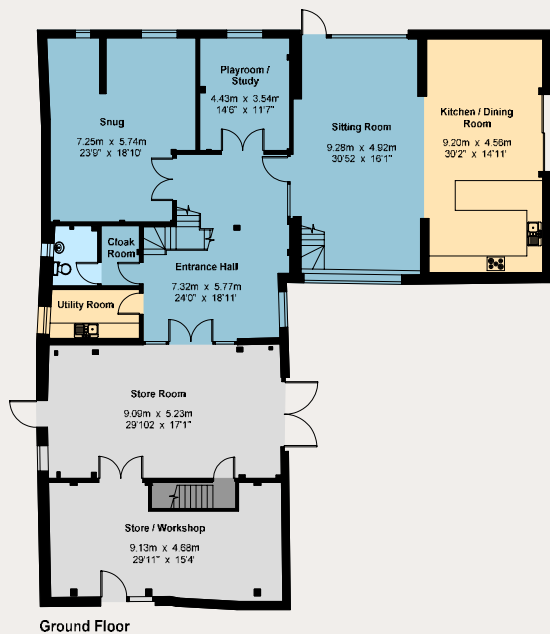


Undertrees Farm

Gross Internal Area : 432.6 sq.m (4656 sq.ft.)



Undertrees Farm Barn Stodmarsh, Canterbury, Kent, CT3 4BE

A substantial Grade II listed period barn offered for residential development, with the potential to become a magnificent family home.

Canterbury West 6.5 miles (London St Pancras 56 minutes), Ashford International 20 miles

Floorplan shows proposed layout

The property

Undertrees Farm Barn is a magnificent period barn, one of the remaining few to come available for conversion. Planning consent for the conversion has been granted by Canterbury City Council under ref: CA//18/00316 and prospective purchasers are advised that they should make their own enquiries of the council.

It is a rare occasion that a property with this potential becomes available in such a sought-after location, which combines rural charm and seclusion with convenient proximity to Canterbury.

Canterbury

2 St Margaret's Street, Canterbury, Kent CT1 2SL

01227 451123

canterbury@struttandparker.com
struttandparker.com

@struttandparker

/struttandparker

60 offices across England and Scotland, including Prime Central London

Outside

The barn is approached over an unmade road, and sits outside the village close to Undertrees Farm House. The plans provide for generous family accommodation and storage, and the existing cart sheds are to be retained for parking.

Location

Stodmarsh is situated in a beautiful rural location, close to Westbere Lakes and the nature reserve. A short distance away is Wickhambreaux, an attractive village with a pub and school. Nearby Canterbury offers a comprehensive range of facilities with an excellent shopping centre, and a choice of schools and recreational opportunities.

High Speed rail services to London St Pancras run from Canterbury West in under an hour. The area has good access to the Continent.

Directions

From Canterbury: Take the Sandwich road (A257). In Littlebourne turn left (signposted to Wickhambreaux). In Wickhambreaux village follow the road keeping the green to the left. Where the road bends sharply to the right continue straight on into Wickham Court Lane. At the next T-junction turn right and follow this road until the road bends very sharply to the left. Shortly after the left hand bend, turn right into the farm track and Undertrees Farm is the first house on the left hand side.

General

Local Authority: Canterbury City Council (01227 862000)

IMPORTANT NOTICE

Strutt & Parker gives notice that: 1. These particulars do not constitute an offer or contract or part thereof. 2. All descriptions, photographs and plans are for guidance only and should not be relied upon as statements or representations of fact. All measurements are approximate and not necessarily to scale. Any prospective purchaser must satisfy themselves of the correctness of the information within the particulars by inspection or otherwise. 3. Strutt & Parker does not have any authority to give any representations or warranties whatsoever in relation to this property (including but not limited to planning/building regulations), nor can it enter into any contract on behalf of the Vendor. 4. Strutt & Parker does not accept responsibility for any expenses incurred by prospective purchasers in inspecting properties which have been sold, let or withdrawn. 5. If there is anything of particular importance to you, please contact this office and Strutt & Parker will try to have the information checked for you. Photographs taken October 2018. Particulars prepared October 2018. Strutt & Parker is a trading style of BNP Paribas Real Estate Advisory & Property Management UK Limited.