

Brocksgrove, Stoke Wood
Stoke Poges, Bucks



Strutt
& Parker

Land and property. Since 1885.

A most handsome residence set within an expansive and lightly wooded plot on one of the most sought after private roads in Buckinghamshire.

Brocks Grove is a most charming home that blends traditional architectural character with sensitive modern updates. The property is defined by its external timber elevations and leaded light windows, while the interior features exposed oak beams, vaulted ceilings and fine woodwork throughout.

At the heart of the ground floor is a generous reception hall with galleried landing, currently arranged as a grand dining space. Further reception spaces include a spacious sitting room with an imposing brick inglenook fireplace, alongside a comfortable family room, both of which open onto the rear terrace. The kitchen is well-appointed with bespoke cabinetry, a central island with breakfast bar and integrated appliances. Additional ground-floor accommodation includes a separate utility room, dedicated study and cloakroom, together with a flexible fourth bedroom benefiting from an en suite bathroom.

On the first floor, the principal bedroom features a vaulted ceiling with exposed timberwork, a dressing room, extensive built-in storage and an en suite bathroom. Two further well-proportioned bedrooms are served by a modern family bathroom. A large boarded loft, extending to over 40 ft, provides excellent additional storage and potential.



To the front, a gravel driveway provides ample parking for multiple vehicles and leads to a detached garage. The property is set within generous, mature grounds offering a high degree of privacy. A paved terrace provides an ideal space for outdoor dining and entertaining, overlooking a substantial lawn bordered by established woodland. The gardens also include a summer house, tool shed and greenhouse.

Postcode region: SL2 4AU

General

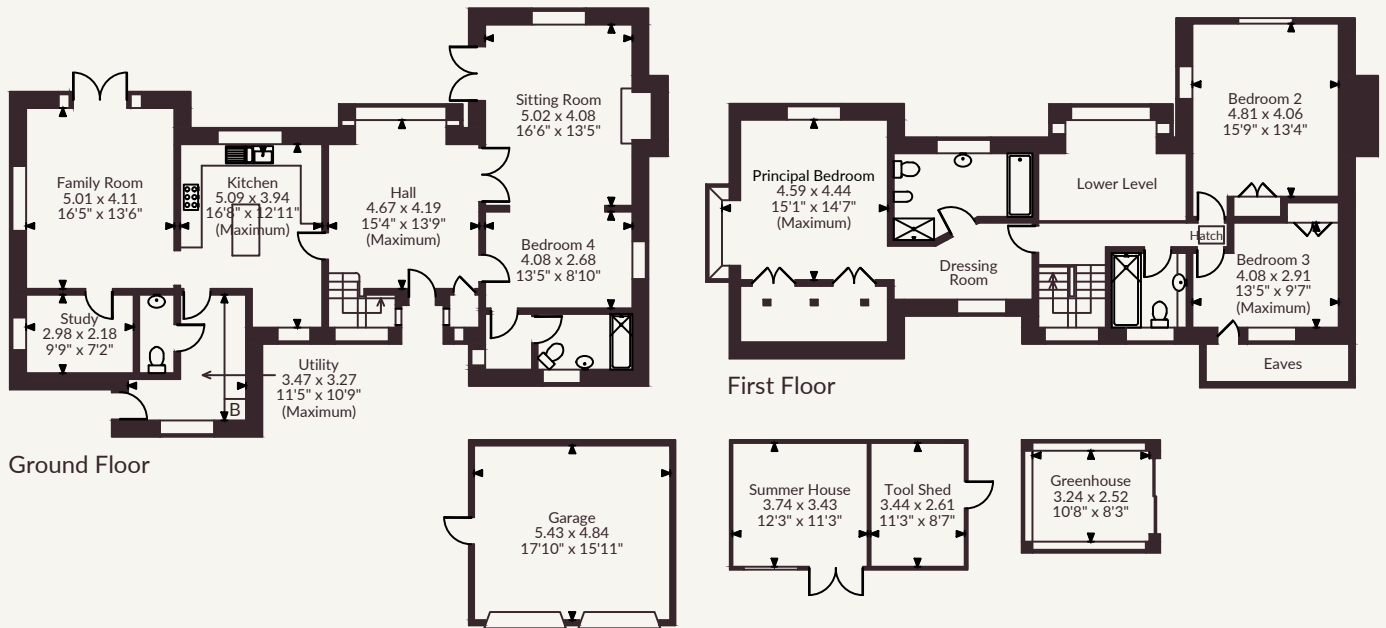
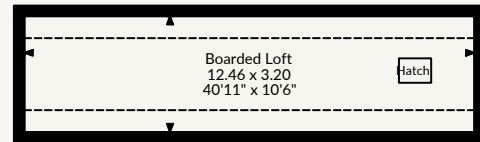
Local Authority: South Buckinghamshire
Services: mains gas, electric, water and drainage
Council Tax: Band G
EPC Rating: C
Mobile and Broadband checker: Information can be found here <https://checker.ofcom.org.uk/en-gb/>

3,108 sq ft (289 sq m)
Private road location
Large level plot
Character residence
Sought after location
Freehold | Village

Guide price £1,750,000



Brocks Grove, Stoke Wood, Stoke Poges, Slough
 Main House internal area 2,500 sq ft (232 sq m)
 Garage internal area 283 sq ft (26 sq m)
 Outbuildings internal area 325 sq ft (30 sq m)
 Total internal area 3,108 sq ft (289 sq m)



FOR ILLUSTRATIVE PURPOSES ONLY - NOT TO SCALE
 The position & size of doors, windows, appliances and other features are approximate only.
 © ehouse. Unauthorised reproduction prohibited. Drawing ref. dig/8689643/SS

Strutt & Parker Gerrards Cross

83 Packhorse Road, Gerrards Cross SL9 8PJ
 01753 891188 | gerrardcross@struttandparker.com



@struttandparker struttandparker.com

Strutt & Parker

Land and property. Since 1885.

IMPORTANT NOTICE: Strutt & Parker gives notice that: 1. These particulars do not constitute an offer or contract or part thereof. 2. All descriptions, photographs and plans are for guidance only and should not be relied upon as statements or representations of fact. All measurements are approximate and not necessarily to scale. Any prospective purchaser must satisfy themselves of the correctness of the information within the particulars by inspection or otherwise. 3. Strutt & Parker does not have any authority to give any representations or warranties whatsoever in relation to this property (including but not limited to planning/building regulations), nor can it enter into any contract on behalf of the Vendor. 4. Strutt & Parker does not accept responsibility for any expenses incurred by prospective purchasers in inspecting properties which have been sold, let or withdrawn. 5. We are able to refer you to SPF Private Clients Limited ("SPF") for mortgage broking services, and to Alexander James Interiors ("AJI"), an interior design service. Should you decide to use the services of SPF, we will receive a referral fee from them of 25% of the aggregate of the fee paid to them by you for the arrangement of a mortgage and any fee received by them from the product provider. Should you decide to use the services of AJI, we will receive a referral fee of 10% of the net income received by AJI for the services they provide to you. 6. If there is anything of particular importance to you, please contact this office and Strutt & Parker will try to have the information checked for you. Strutt & Parker is a trading style of BNP Paribas Real Estate Advisory & Property Management UK Limited. Photographs taken May 2026. Particulars prepared May 2026.