



The image shows a spacious, bright living and dining area. In the foreground, a glass-topped dining table with a chrome frame is surrounded by black, modern-style chairs. Behind the table is a large, light-colored sectional sofa. To the left, a large window with patterned curtains allows natural light into the room. To the right, a built-in white shelving unit houses a television, a fireplace with candles, and various decorative items. The ceiling features a modern ceiling fan and recessed lighting. The floor is made of polished wood.

# TEDWORTH SQUARE

CHELSEA SW3



A fabulous apartment with 3.4m ceiling height, located on the north terrace of this sought-after Chelsea garden square address, close to Sloane Square

## THE PROPERTY

The apartment is approximately 888 sq ft, arranged over the second and third floors of this red brick, portered and share of freehold building.

The entrance to the building is closest to Burton Court and the second-floor entrance opens to a hall with a coat cupboard and door to the principal bedroom with an en-suite bathroom. An attractive staircase rises to a central landing and the main reception room which has a studio atmosphere, with 3.4m ceilings and a full-height, glazed elevation facing south and oblique views to the garden square.

There is an immaculate fitted kitchen with a door that opens onto a shared balcony. Adjacent is a second double bedroom, also with access to a second shared balcony.

A guest bathroom also doubles as a guest cloakroom with fixtures and fittings.







## TERMS

**Tenure:** Share of Freehold, 953 years and 4 months remaining

**Guide Price:** £1,650,000

**Service Charge:** £5,170 per annum, including a fund of £1,181.24 per annum

**Local Authority:** The Royal Borough of Kensington & Chelsea

**Council Tax:** Band G

**EPC:** Rating C



## ACCOMMODATION

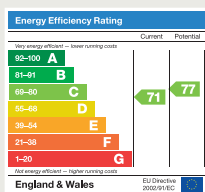
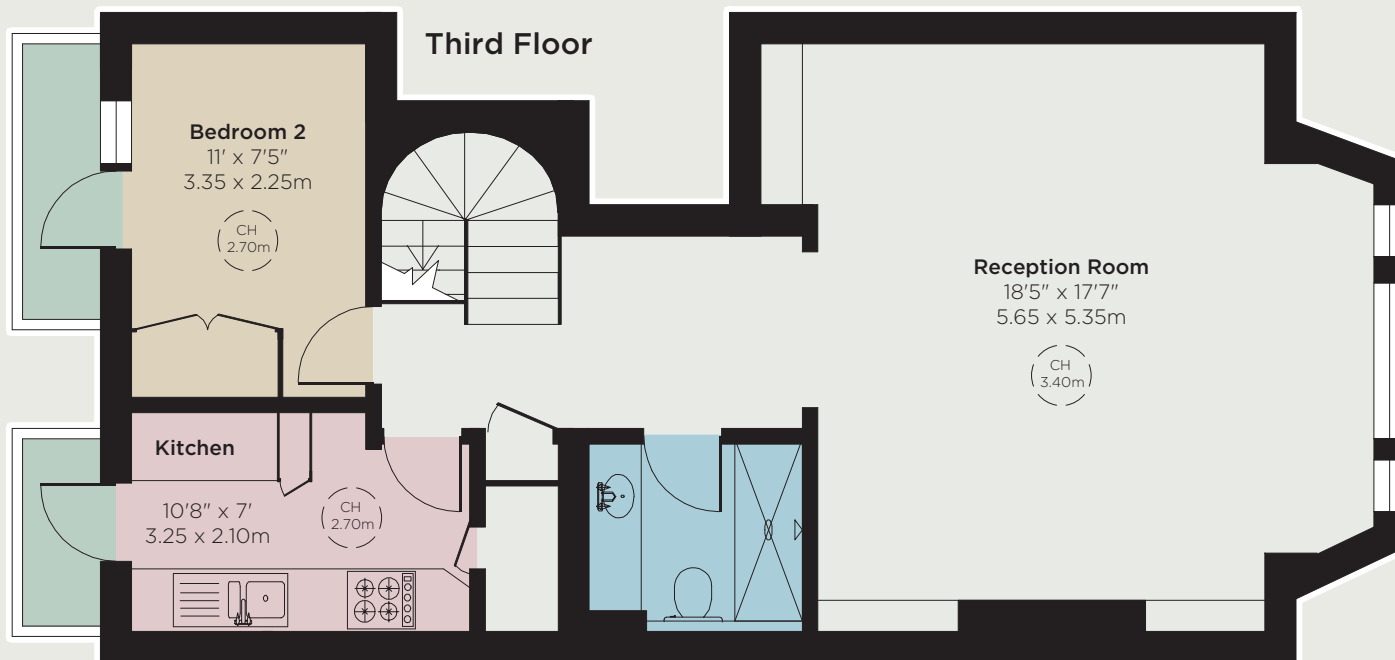
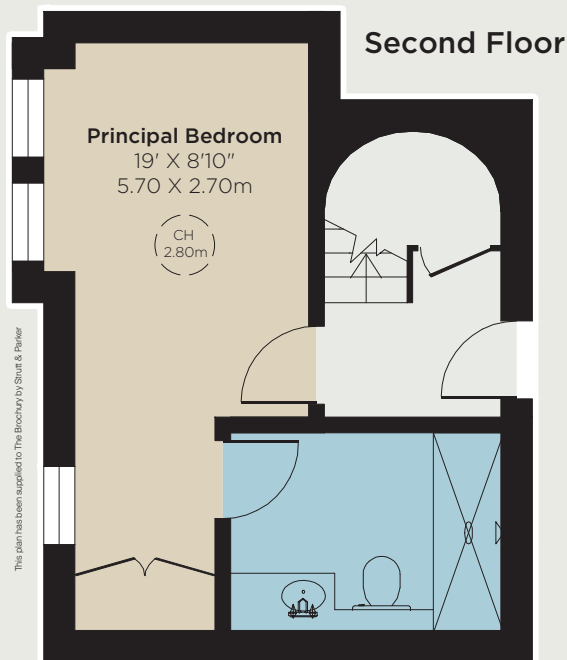
- Two bedrooms
- Two bathrooms
- One reception room
- Porter
- Balcony
- Communal gardens
- Residents' parking

## LOCATION

Tedworth Square is a very central address, a short distance to Sloane Square and about 300m from the Kings Road with all of the shops, restaurants and amenities it has to offer. Chelsea Green is also close by.

The property has access to the communal gardens of Tedworth Square. The gardens of Burton Court are also close by, access to which can be sought directly with the Royal Hospital, which allows dogs off the lead, as well as having tennis courts.





**Approximate Internal Floor Area**  
888 sq ft  
82.5 sq m

**IMPORTANT NOTICE:** Strutt & Parker gives notice that: 1. These particulars do not constitute an offer or contract or part thereof. 2. All descriptions, photographs and plans are for guidance only and should not be relied upon as statements or representations of fact. All measurements are approximate and not necessarily to scale. Any prospective purchaser must satisfy themselves of the correctness of the information within the particulars by inspection or otherwise. 3. Strutt & Parker does not have any authority to give any representations or warranties whatsoever in relation to this property (including but not limited to planning/building regulations), nor can it enter into any contract on behalf of the Vendor. 4. Strutt & Parker does not accept responsibility for any expenses incurred by prospective purchasers in inspecting properties which have been sold, let or withdrawn. 5. We are able to refer you to SPF Private Clients Limited ("SPF") for mortgage broking services, and to Alexander James Interiors ("AJI"), an interior design service. Should you decide to use the services of SPF, we will receive a referral fee from them of 25% of the aggregate of the fee paid to them by you for the arrangement of a mortgage and any fee received by them from the product provider. Should you decide to use the services of AJI, we will receive a referral fee of 10% of the net income received by AJI for the services they provide to you. 6. If there is anything of particular importance to you, please contact this office and Strutt & Parker will try to have the information checked for you. **Photographs taken February 2024. Particulars prepared February 2024.** Strutt & Parker is a trading style of BNP Paribas Real Estate Advisory & Property Management UK Limited. 05/03/24S&P-240626-04-GG

**Sloane Street**

66 Sloane Street, London SW1X 9SH

**+44 (0)20 7235 9959**

knightsbridge@struttandparker.com  
struttandparker.com

@struttandparker

/struttandparker

Over 45 offices across England and Scotland, including Prime Central London