



Television Centre, Wood Lane, W12

For the finer things in property.

**STRUTT  
& PARKER**

BNP PARIBAS GROUP



## Television Centre, Wood Lane, W12

A well-presented first-floor duplex flat with lift and 24/7 concierge in this iconic development.

This bright and well-proportioned apartment has a wonderful open plan kitchen/reception room with views into the Helios.

The Television Centre development has created a thriving community honouring its previous history with original features and the historic studios for live audiences. It is superbly positioned for the underground stations of White City, Wood Lane and Shepherd's Bush. The area is further served by excellent overground, bus and road routes into the West End, the City and Canary Wharf.

Entrance hall | Kitchen/reception room  
Bedroom | Bathroom | 24/7 Concierge | Gym membership to Soho House Health Club  
EPC rating B

### Terms

**Tenure:** Leasehold, 975 years from 29.10.2017

**Service Charge:** Approximately £5,277 pa

**Ground Rent:** £450 pa

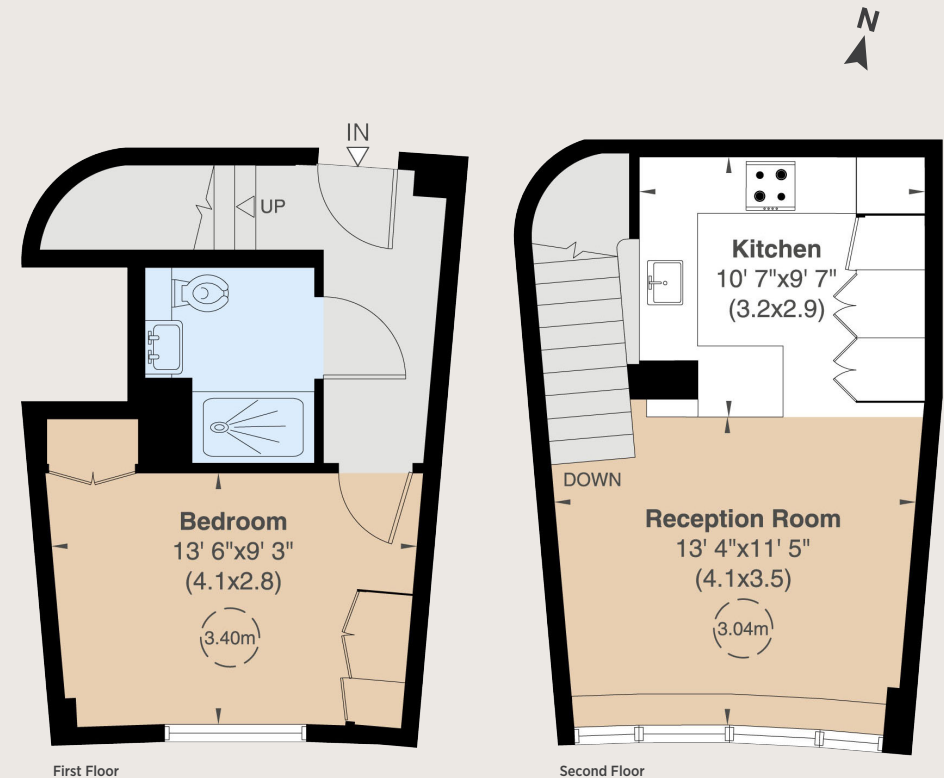
**Council Tax:** Band E

**Local Authority:** Hammersmith and Fulham

**Asking Price:** £575,000



Gross Internal Area 543 sq ft (50 sq m)  
For identification purposes only.



## Notting Hill

303 Westbourne Grove, London, W11 2QA

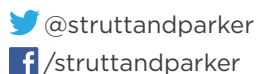
**020 7221 1111**

nottinghill@struttandparker.com

struttandparker.com

### IMPORTANT NOTICE

Strutt & Parker gives notice that: 1. These particulars do not constitute an offer or contract or part thereof. 2. All descriptions, photographs and plans are for guidance only and should not be relied upon as statements or representations of fact. All measurements are approximate and not necessarily to scale. Any prospective purchaser must satisfy themselves of the correctness of the information within the particulars by inspection or otherwise. 3. Strutt & Parker does not have any authority to give any representations or warranties whatsoever in relation to this property (including but not limited to planning/building regulations), nor can it enter into any contract on behalf of the Vendor. 4. Strutt & Parker does not accept responsibility for any expenses incurred by prospective purchasers in inspecting properties which have been sold, let or withdrawn. 5. We are able to refer you to SPF Private Clients Limited ("SPF") for mortgage broking services, and to Alexander James Interiors ("AJI"), an interior design service. Should you decide to use the services of SPF, we will receive a referral fee from them of 25% of the aggregate of the fee paid to them by you for the arrangement of a mortgage and any fee received by them from the product provider. Should you decide to use the services of AJI, we will receive a referral fee of 10% of the net income received by AJI for the services they provide to you. 6. If there is anything of particular importance to you, please contact this office and Strutt & Parker will try to have the information checked for you. Photographs taken February 2024. Particulars prepared February 2024. Strutt & Parker is a trading style of BNP Paribas Real Estate Advisory & Property Management UK Limited.



Over 45 offices across England and Scotland,  
including Prime Central London

**For the finer things in property.**

