



Television Centre, Wood Crescent, W12

For the finer things in property.

**STRUTT
& PARKER**

BNP PARIBAS GROUP

Television Centre, Wood Crescent, W12

A modern apartment with outdoor space in the iconic Television Centre development.

A fantastic studio apartment measuring 492sqft with green views over the central atrium of the Television Centre and benefiting from world class facilities including residents private gym, spa and pool by SOHO House, 24 hour concierge, residents lounge and screening and meeting rooms.

The Television Centre is perfectly located near various underground stations such as White City, Wood Lane and Shepherds Bush and is further served by excellent overground, bus and road routes into the West End and Canary Wharf.

Kitchen/reception | Bedroom | Shower room
Air Conditioning | 24-hour concierge | Gym
Membership to Soho House Health Club
EPC Rating B

Terms

Tenure: Leasehold expiring 29/09/2992

Service Charge: Approximately £10.00 per sqft

Ground Rent: £900pa

Council Tax: Band E

Local Authority: The London Borough of Hammersmith and Fulham

Asking Price: £549,000

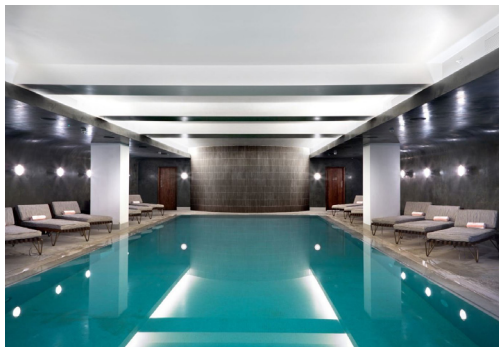
Notting Hill

303 Westbourne Grove, London, W11 2QA

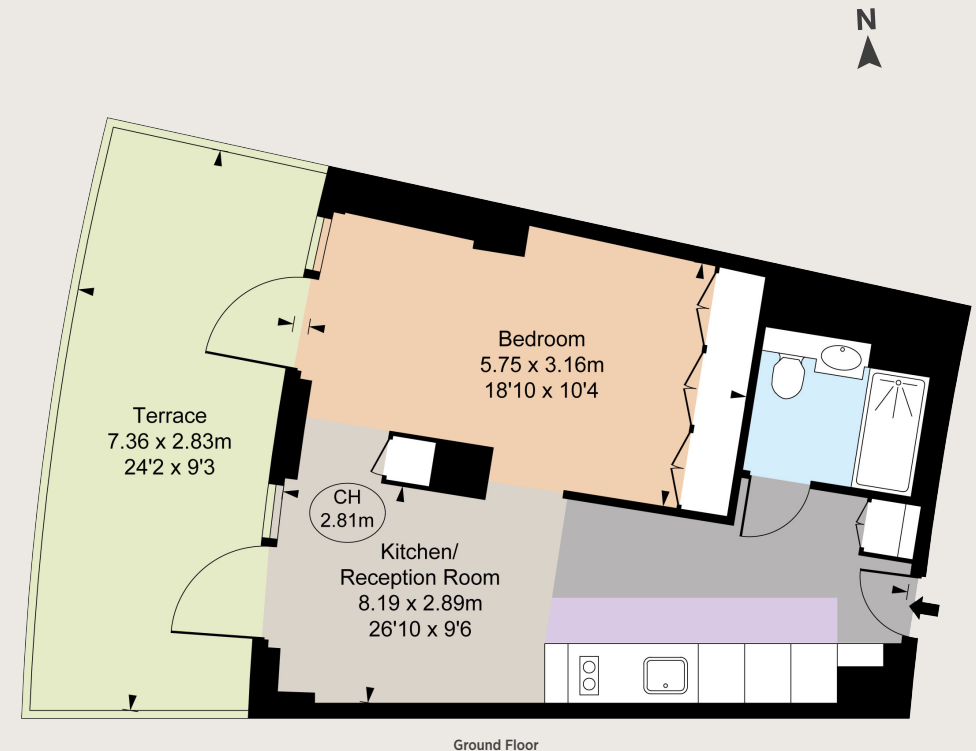
020 7221 1111

nottinghill@struttandparker.com

struttandparker.com



Gross Internal Area 492 sq ft (45.72 sq m) including restricted height under 1.5m
For identification purposes only.



IMPORTANT NOTICE

Strutt & Parker gives notice that: 1. These particulars do not constitute an offer or contract or part thereof. 2. All descriptions, photographs and plans are for guidance only and should not be relied upon as statements or representations of fact. All measurements are approximate and not necessarily to scale. Any prospective purchaser must satisfy themselves of the correctness of the information within the particulars by inspection or otherwise. 3. Strutt & Parker does not have any authority to give any representations or warranties whatsoever in relation to this property (including but not limited to planning/building regulations), nor can it enter into any contract on behalf of the Vendor. 4. Strutt & Parker does not accept responsibility for any expenses incurred by prospective purchasers in inspecting properties which have been sold, let or withdrawn. 5. We are able to refer you to SPF Private Clients Limited ("SPF") for mortgage broking services, and to Alexander James Interiors ("AJI"), an interior design service. Should you decide to use the services of SPF, we will receive a referral fee from them of 25% of the aggregate of the fee paid to them by you for the arrangement of a mortgage and any fee received by them from the product provider. Should you decide to use the services of AJI, we will receive a referral fee of 10% of the net income received by AJI for the services they provide to you. 6. If there is anything of particular importance to you, please contact this office and Strutt & Parker will try to have the information checked for you. Photographs taken August 2024. Particulars prepared August 2024. Strutt & Parker is a trading style of BNP Paribas Real Estate Advisory & Property Management UK Limited.



Over 50 offices across England and Scotland,
including Prime Central London

For the finer things in property.

