



# Television Centre

London, W12



## A stunning one bedroom in the Helios building at the Television Centre.

A marvellous apartment within the Television Centre located on the first floor overlooking the iconic Helios statue.



**1 RECEPTION ROOM**



**1 BEDROOM**



**1 BATHROOM**



**LEASEHOLD**



**579 SQ FT**



**GUIDE PRICE  
£549,000**



### The property

This wonderful apartment is split over two levels and has the benefit of high ceilings and fabulous wide windows allowing plenty of light to enter. The modern, open-plan kitchen/reception area is situated on the upper floor and allows for brilliant entertaining space with the additional benefit of Terrazzo stone worktops and a Italian Dada designed kitchen. The principal bedroom can be found on the lower floor offering bespoke built-in wardrobes and unique windows looking over the Helios. The main bathroom is situated next door offering a walk-in shower.

The Television Centre benefits from extensive residents' amenities include 24-hour concierge, cinema room, a gym and pool by Soho House Health Club and private gardens.

### Location

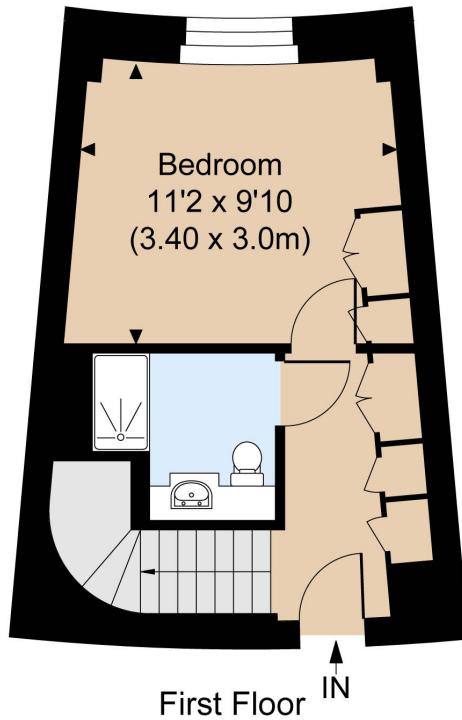
Located in the heart of White City, the former BBC Television Centre sits on Wood lane, next to Westfield Shopping Centre which offers an abundance of retail, leisure, and entertainment venues. Ideally

located with access to the glorious open space of Hammersmith Park boasting a Japanese Garden, a gated children's play area, bowling green, tennis courts and five-a-side football pitches. With White City station (approximately 0.1 mile, Central line), Wood Lane (approximately 0.1 mile, Hammersmith & City and Circle lines) and Shepherd's Bush (approximately 0.6 miles, Central line and Overground lines) stations on your doorstep. The Television Centre is served by excellent underground, overground, bus and road routes into the West End, the City and Canary Wharf.

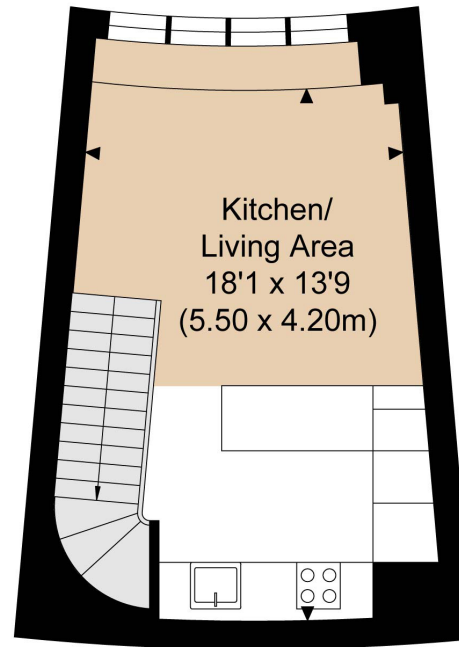








First Floor



Second Floor

## Floorplans

**Gross internal area** 579 sq ft (53.80 sq m)  
For identification purposes only.

## General

**Tenure:** Leasehold, expires 29/09/2992

**Local Authority:** Hammersmith and Fulham

**Service Charge:** £6,966 per annum

**Ground Rent:** £450 per year

**Council Tax:** Band E

**EPC Rating:** B

**Parking:** Not available

**Broadband:** Available

**Asking Price:** £549,000

## Notting Hill

303 Westbourne Grove, London, W11 2QA

**020 7221 1111**

[nottinghill@struttandparker.com](mailto:nottinghill@struttandparker.com)

[struttandparker.com](http://struttandparker.com)

**IMPORTANT NOTICE:** Strutt & Parker gives notice that: 1. These particulars do not constitute an offer or contract or part thereof. 2. All descriptions, photographs and plans are for guidance only and should not be relied upon as statements or representations of fact. All measurements are approximate and not necessarily to scale. Any prospective purchaser must satisfy themselves of the correctness of the information within the particulars by inspection or otherwise. 3. Strutt & Parker does not have any authority to give any representations or warranties whatsoever in relation to this property (including but not limited to planning/building regulations), nor can it enter into any contract on behalf of the Vendor. 4. Strutt & Parker does not accept responsibility for any expenses incurred by prospective purchasers in inspecting properties which have been sold, let or withdrawn. 5. We are able to refer you to SPF Private Clients Limited ("SPF") for mortgage broking services, and to Alexander James Interiors ("AJI"), an interior design service. Should you decide to use the services of SPF, we will receive a referral fee from them of 25% of the aggregate of the fee paid to them by you for the arrangement of a mortgage and any fee received by them from the product provider. Should you decide to use the services of AJI, we will receive a referral fee of 10% of the net income received by AJI for the services they provide to you. 6. If there is anything of particular importance to you, please contact this office and Strutt & Parker will try to have the information checked for you. Photographs taken April 2025. Particulars prepared April 2025. Strutt & Parker is a trading style of BNP Paribas Real Estate Advisory & Property Management UK Limited



@struttandparker

Over 50 offices across England and Scotland,  
including Prime Central London

For the finer things in property.

