

Television Centre,
Wood Lane



Strutt
& Parker

Land and property. Since 1885.

A stunning two-bedroom apartment in the iconic Television Centre with a right-to-park.

Located on the third floor of the iconic Helios building, this beautifully designed two-bedroom, two-bathroom apartment offers luxurious living in the heart of the prestigious Television Centre development.

Boasting a spacious layout and high-spec finishes throughout, the apartment features a stylish open-plan reception and dining area, complete with an Italian Dada kitchen, Terrazzo stone worktops, and integrated appliances. Floor-to-ceiling sliding doors lead out to a large private sun-drenched balcony with tranquil views over the beautifully landscaped communal gardens, perfect for relaxing or entertaining.

The principal bedroom is generously proportioned, offering extensive built-in storage and a sleek en-suite shower room. A second double bedroom also benefits from built-in wardrobes and large windows that flood the space with natural light. A contemporary family bathroom with a shower over bath completes the accommodation.

Further highlights include secure lift access, a right-to-park parking space, and access to an array of luxury residents' amenities, including a 24-hour concierge, a private cinema, and exclusive use of the Soho House-managed gym and swimming pool.



Location

The Television Centre is perfectly located close to White City, Wood Lane and Shepherds Bush underground stations and is further served by excellent over-ground, bus and road routes into the West End and Canary Wharf.

Postcode region: W12

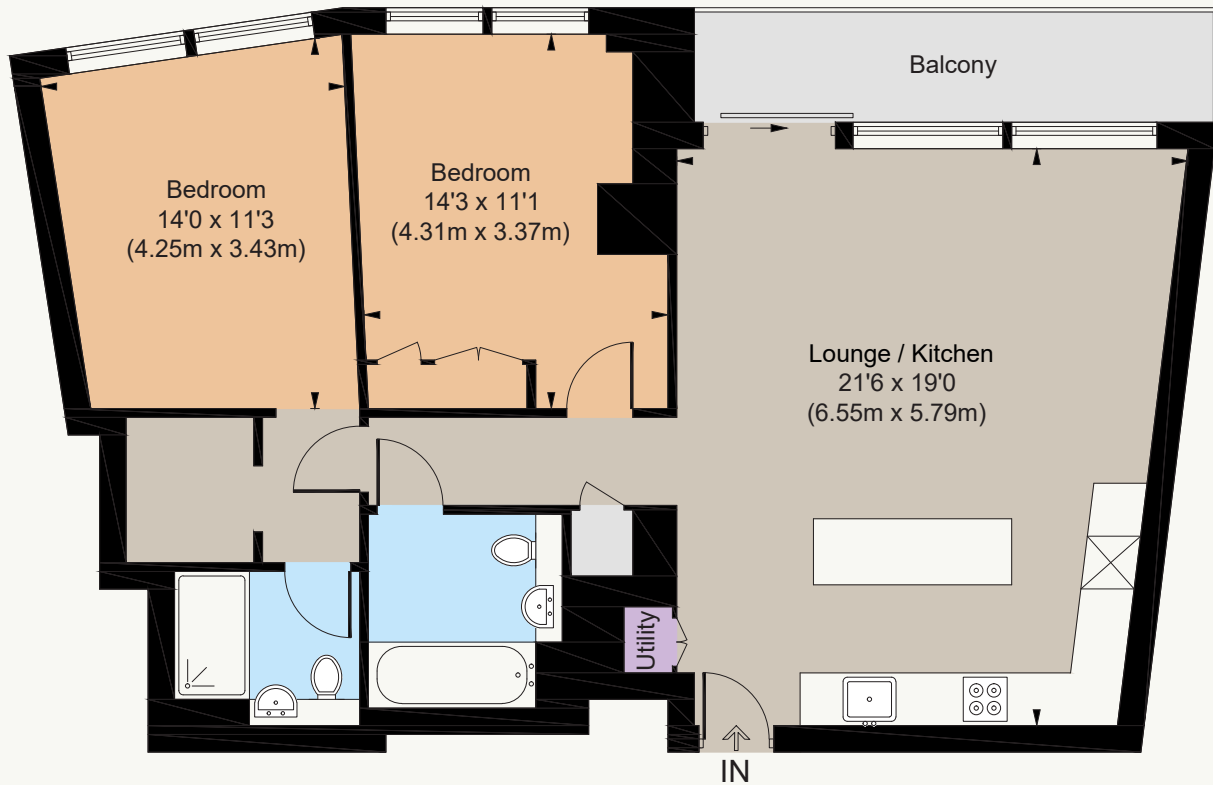
General

Tenure: Leasehold, 966 years remaining
Local Authority: Hammersmith and Fulham
Council Tax: Band B
EPC Rating: F
Service Charge: £8,122 per annum
Ground Rent: £600 per annum
Parking: A right-to-park parking space
Mobile coverage and broadband: Information can be found here: <https://checker.ofcom.org.uk/en-gb/mobile-coverage>

930 sq ft (86.4 sq m)
Reception/dining room
Balcony | Communal gardens
Parking | 24 hour concierge
Resident's leisure facilities
Leasehold

Guide price £950,000





Third Floor

Television Centre

Approximate Gross Internal Area = 930 sq ft / 86.4 sq m



Strutt & Parker Notting Hill

303 Westbourne Grove, London, W11 2QA

020 7221 1111 | nottinghill@struttandparker.com



@struttandparker

struttandparker.com

IMPORTANT NOTICE: Strutt & Parker gives notice that: 1. These particulars do not constitute an offer or contract or part thereof. 2. All descriptions, photographs and plans are for guidance only and should not be relied upon as statements or representations of fact. All measurements are approximate and not necessarily to scale. Any prospective purchaser must satisfy themselves of the correctness of the information within the particulars by inspection or otherwise. 3. Strutt & Parker does not have any authority to give any representations or warranties whatsoever in relation to this property (including but not limited to planning/building regulations), nor can it enter into any contract on behalf of the Vendor. 4. Strutt & Parker does not accept responsibility for any expenses incurred by prospective purchasers in inspecting properties which have been sold, let or withdrawn. 5. We are able to refer you to SPF Private Clients Limited ("SPF") for mortgage broking services, and to Alexander James Interiors ("AJI"), an interior design service. Should you decide to use the services of SPF, we will receive a referral fee from them of 25% of the aggregate of the fee paid to them by you for the arrangement of a mortgage and any fee received by them from the product provider. Should you decide to use the services of AJI, we will receive a referral fee of 10% of the net income received by AJI for the services they provide to you. 6. If there is anything of particular importance to you, please contact this office and Strutt & Parker will try to have the information checked for you. Strutt & Parker is a trading style of BNP Paribas Real Estate Advisory & Property Management UK Limited. Photographs taken April 2026. Particulars prepared April 2026.

Strutt
& Parker

Land and property. Since 1885.