



Television Centre, Wood Lane, W12

Television Centre, Wood Lane, W12

A stunning one bedroom flat in this iconic West London development.

This bright and airy fifth floor apartment consists of a large, open-plan reception room, a fabulous fitted kitchen/dining room, a double bedroom which has a separate dressing area and a stylish en suite bathroom. The extensive residents' amenities include 24-hour concierge, residents' lounge, cinema room, a gym by Soho House Health Club and private gardens.

The Television Centre is superbly positioned for the underground stations of White City, Wood Lane and Shepherd's Bush and, the area is further served by excellent overground, bus and road routes into the West End, the City and Canary Wharf.

Agents note: the vendor of this property is an employee of BNP Paribas Real Estate. Strutt & Parker is a trading style of BNP Paribas Real Estate.

Kitchen/Reception room | Bedroom | Bathroom | Lift | 24-hour concierge | Gym membership to Soho House Health Club | EPC rating B

Terms

Tenure: Leasehold. 975 years from 29.09.2017

Service Charge: Approximately £4,719 PA

Local Authority: London Borough of Hammersmith and Fulham

Price: Upon application

Notting Hill

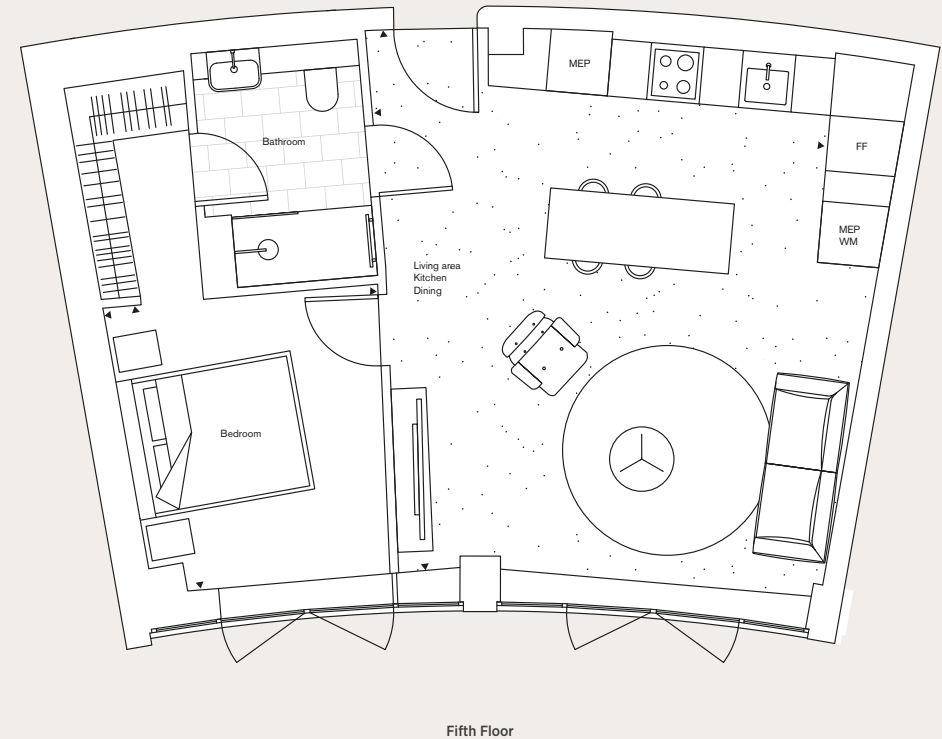
303 Westbourne Grove, London, W11 2QA

020 7221 1111

nottinghill@struttandparker.com



Approximate Gross Internal Area 580 sq ft (53.9 sq m)
For identification purposes only.



IMPORTANT NOTICE

Strutt & Parker gives notice that: 1. These particulars do not constitute an offer or contract or part thereof. 2. All descriptions, photographs and plans are for guidance only and should not be relied upon as statements or representations of fact. All measurements are approximate and not necessarily to scale. Any prospective purchaser must satisfy themselves of the correctness of the information within the particulars by inspection or otherwise. 3. Strutt & Parker does not have any authority to give any representations or warranties whatsoever in relation to this property (including but not limited to planning/building regulations), nor can it enter into any contract on behalf of the Vendor. 4. Strutt & Parker does not accept responsibility for any expenses incurred by prospective purchasers in inspecting properties which have been sold, let or withdrawn. 5. We are able to refer you to SPF Private Clients Limited ("SPF") for mortgage broking services, and to Alexander James Interiors ("AJI"), an interior design service. Should you decide to use the services of SPF, we will receive a referral fee from them of 25% of the aggregate of the fee paid to them by you for the arrangement of a mortgage and any fee received by them from the product provider. Should you decide to use the services of AJI, we will receive a referral fee of 10% of the net income received by AJI for the services they provide to you. 6. If there is anything of particular importance to you, please contact this office and Strutt & Parker will try to have the information checked for you. Photographs taken September 2019. Particulars prepared September 2019 Strutt & Parker is a trading style of BNP Paribas Real Estate Advisory & Property Management UK Limited.