



Aspen House

Teston Road, Offham, West Malling, Kent



BNP PARIBAS GROUP 

A stunning 'New England' style home, immaculately presented in one of Kent's prettiest villages

This meticulously presented 5 bedroom, 4 bathroom property with a guest suite on the ground floor, featuring a host of extras, has been designed to capture light and maximise space



4 RECEPTION ROOMS



5 BEDROOMS



4 BATHROOMS



GARAGE



0.384 ACRES



FREEHOLD



**RURAL/
VILLAGE**



3,391 SQ FT



**GUIDE PRICE
£1,750,000**



The property

Aspen House has a recently decorated kitchen / breakfast room with a huge central island with a prep sink and bar seating for two and a tasteful bar. The kitchen leads seamlessly to the living area where a feature raised "stage" allows dining for four with 180-degree views of the garden. Running alongside the entire length of the house is a boot room with dog shower, a fully fitted utility room and fully fitted walk-in pantry, a study/library and a large room with oak beams, currently a craft room but easily converted to a gym or second home office.

There is a large downstairs guest suite with an adjacent bathroom with a walk-in shower. The hallway outside can double as a further guest office area. From there a door leads to the extra wide heated garage featuring a large garden store at the rear with H&C sink, numerous power points and two large work benches.

On the first floor there is an impressive fully fitted, air-conditioned principal bedroom with an en-suite shower room. The room has its own balcony overlooking the garden and far-reaching views. Along the hall is the first double bedroom with fitted wardrobes. Opposite is the family bathroom with shower and bath and a walk-in boiler and dryer/airing room.

The second bedroom is also fully fitted and even contains a fully furnished mouse hole in the skirting board. At the end of the hall is a large double bedroom with dressing area, fitted wardrobes and a large luxury ensuite bath and shower room. A door from the bathroom leads to a large, heated storeroom with a fitted wardrobe, ideal for cases, seasonal clothes and bedding.





Outside

The property has an impressive in and out drive approach with plenty of parking. The garage is double length. Just behind the garage is a garden room/workshop with double doors out to the garden.

The garden behind the house has a south east perspective and is mainly laid to lawn and interspersed with young and mature trees - including fruit trees. The garden is wide and has a sunny aspect with several areas to sit out. A fully enclosed allotment and raised vegetable beds to hot and cold taps by the garage and remote lighting to show off the house at night.

Also, outside is the simply stunning covered deck, protected on two sides with a roof, two skylights and ceiling mounted fans, it is a superb area to entertain whatever the weather. The deck is composite (as is all the cladding) so requires no maintenance, is non-slip and offers entry to the downstairs guest suite and the current craft room as well as the main dining room. It

has a working fireplace and two sets of double outdoor sockets and is big enough for a 10-seater dining table, a swing chair and loungers. A great place to sit and enjoy the totally secluded garden.

Location

Aspen House occupies a prominent position in the beautiful village of Offham, well known for its community events, its excellent pub and Spadework which has a café, farm shop, and garden centre. The village has its own primary school, tennis courts, a very busy village hall, a cricket pitch and a beautiful church. The Offham Society hosts a number of events including Jazz on the field, quiz nights, treasure hunts for the kids and more. Offham even has its own range of branded merchandise! There are many walks using the pub as a start and finish point. West Malling with its many shops, restaurants and pubs is 1.6 miles away. Aspen house sits in catchment area of Borough Green Medical Practice one of the best practices in the area. The house is minutes away from the M20 and M26 which connect to all the main motorways.

Distances

- West Malling 1.6 miles
- J3/2A of M20/M26 1.5 miles
- Borough Green 3 miles
- Maidstone 7 miles
- Tonbridge 9 miles
- Sevenoaks 11 miles

Nearby Stations

- West Malling (serving London Charing Cross and Victoria)
- Borough Green
- Maidstone
- Tonbridge
- Sevenoaks

Key Locations

- Leeds Castle
- Rochester Castle
- Upnor Castle
- Mote Park
- Kent Life Heritage Farm Park

Nearby Schools

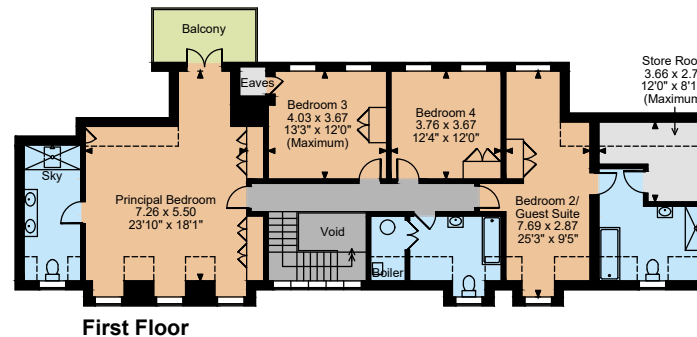
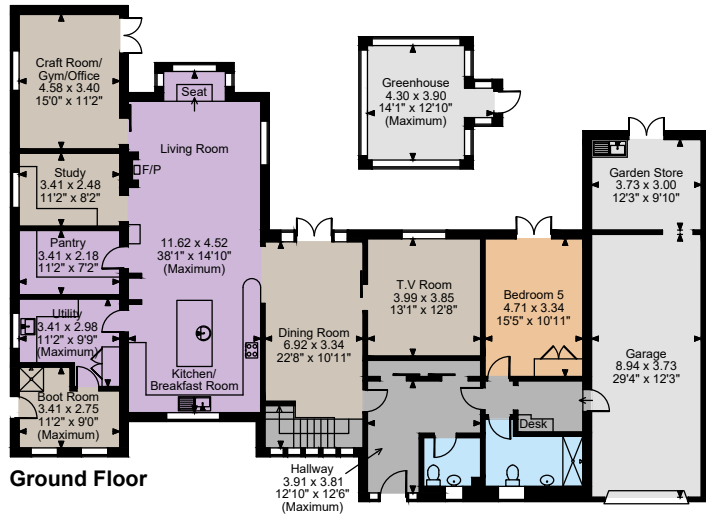
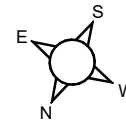
- Offham Primary School
- Merewith Primary School
- Kingshill Primary School
- The Malling School
- Wrotham School
- Grammar Schooling in Maidstone, Tonbridge and Tunbridge Wells
- Sutton Valence
- Bethany











The position & size of doors, windows, appliances and other features are approximate only.

□□□ Denotes restricted head height

© ehouse. Unauthorised reproduction prohibited. Drawing ref. dig/8662077/SLU



Floorplans

House internal area 3,391 sq ft (315 sq m)

For identification purposes only.

Directions

ME19 5NQ

what3words: ///feuds.tweezers.darkest

General

Local Authority: Tonbridge & Malling

Services: All mains services, including gas

Mobile and Broadband checker: Information can be found here <https://checker.ofcom.org.uk/en-gb/>

Council Tax: Band G

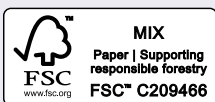
EPC Rating: C

Sevenoaks

15 Bank Street, Sevenoaks, Kent TN13 1UW

01732 459900

sevenoaks@struttandparker.com
struttandparker.com



@struttandparker

Over 50 offices across England and Scotland,
including Prime Central London

For the finer things in property.

