

The Gatehouse, Kensington



Strutt & Parker

Land and property. Since 1885.

A spacious reception and two double bedroom flat in a former Dunhill pipe and tobacco factory.

The Gatehouse is located in the heart of Hillgate Village, close to Notting Hill Gate Underground station and Fox Primary.

The large open plan reception, period features, twin en suite bathrooms, and lift access make this 1,455 sq. ft, second floor flat much sought after.



Location

Uxbridge Street is part of the ever popular 'Hillgate Village' and is found just to the south of Notting Hill Gate, within the Fox Primary School catchment area, close to plenty of wonderful local shops, restaurants and excellent transport links at Notting Hill Gate tube station and several London Bus routes.

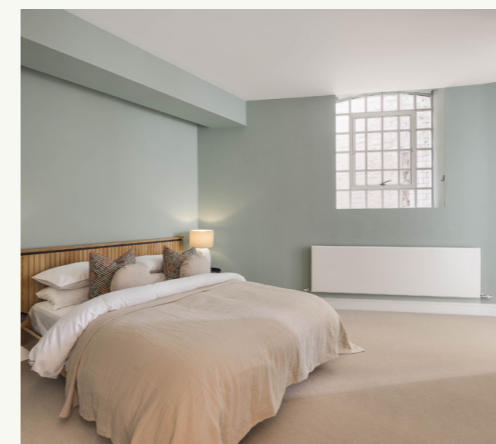
Postcode region: W8

General

Tenure: Leasehold (999 years from 2023)
Local Authority: Royal Borough of Kensington and Chelsea
Council Tax: Band H
EPC Rating: D
Service Charge: £5,629 per annum
Ground Rent: Peppercorn
Parking: RBKC
Mobile coverage and broadband: Information can be found here: <https://checker.ofcom.org.uk/en-gb/mobile-coverage>

1,524 sq ft (141.67 sq m)
Open plan reception
Lift access
Period features
2 ensuite bedrooms
No onward chain
Leasehold

Guide price £1,950,000



The Gatehouse, Uxbridge Street, W8

APPROX. GROSS INTERNAL AREA *
1524 Sq Ft - 141.67 Sq M



This floorplan is for GUIDANCE ONLY and NOT FOR VALUATION purposes.

Strutt & Parker Kensington

103 Kensington Church Street, London W8 7LN
020 7938 3666 | kensington@struttandparker.com



@struttandparker struttandparker.com

IMPORTANT NOTICE: Strutt & Parker gives notice that: 1. These particulars do not constitute an offer or contract or part thereof. 2. All descriptions, photographs and plans are for guidance only and should not be relied upon as statements or representations of fact. All measurements are approximate and not necessarily to scale. Any prospective purchaser must satisfy themselves of the correctness of the information within the particulars by inspection or otherwise. 3. Strutt & Parker does not have any authority to give any representations or warranties whatsoever in relation to this property (including but not limited to planning/building regulations), nor can it enter into any contract on behalf of the Vendor. 4. Strutt & Parker does not accept responsibility for any expenses incurred by prospective purchasers in inspecting properties which have been sold, let or withdrawn. 5. We are able to refer you to SPF Private Clients Limited ("SPF") for mortgage broking services, and to Alexander James Interiors ("AJI"), an interior design service. Should you decide to use the services of SPF, we will receive a referral fee from them of 25% of the aggregate of the fee paid to them by you for the arrangement of a mortgage and any fee received by them from the product provider. Should you decide to use the services of AJI, we will receive a referral fee of 10% of the net income received by AJI for the services they provide to you. 6. If there is anything of particular importance to you, please contact this office and Strutt & Parker will try to have the information checked for you. Strutt & Parker is a trading style of BNP Paribas Real Estate Advisory & Property Management UK Limited. Photographs taken June 2026. Particulars prepared June 2026.

Strutt & Parker

Land and property. Since 1885.