




Wyndale House

4 The Lane, Weston by Welland, Market Harborough, Leicestershire



BNP PARIBAS GROUP 

A delightful four-bedroom period house, set in a sought-after village position within easy reach of Market Harborough

A charming detached period house with splendid original details and delightful gardens, set on a peaceful lane in the tiny village of Weston by Welland and backing onto open countryside. The property features attractive ironstone elevations and exposed timber beams, with flexible accommodation and modern fittings complimenting the period features.



3 RECEPTION ROOMS



4 BEDROOMS



3 BATHROOMS



GARAGE & SWIMMING POOL



0.45 ACRES



FREEHOLD



VILLAGE



2,151 SQ FT



**GUIDE PRICE
£1,040,000**

The property

Wyndale House, which was built in 1748 and is unlisted, is a highly attractive detached period home with four bedrooms and comfortable reception rooms, combining character features with elegant, understated contemporary fittings. There are three well-presented reception rooms on the ground floor, including the well-proportioned drawing room with its timber beams overhead, wooden flooring and grand open fireplace. Plenty of natural light is welcomed through the triple aspect, which includes French doors leading to the garden. There is also a sitting room in which to relax to the front, with exposed stone wall and fireplace fitted with a woodburning stove, while the welcoming entrance hall is spacious and ideal for use as a dining room.

Additionally, on the ground level, the kitchen has been recently renovated and includes sleek modern units to base and wall level, as well as an integrated oven, hob and extractor hood. The adjoining utility room provides plenty of further storage, as well as space for appliances including an American-style fridge freezer.

Upstairs there are four double bedrooms of similar proportions, including the principal bedroom, which has windows to the front and rear, as well as an en suite bathroom with a bathtub and a large separate shower unit. One further bedroom has an en suite shower room and there is a family shower room.

Outside

The house has a west-facing garden and enjoys sun all day round, with stunning views of gardens and surrounds from all aspects. At the front, well-stocked beds of perennials and shrubs frame steps to the entrance. A gravel driveway provides parking and access to a detached double garage offering parking, storage, or workshop space. Most of the garden lies to the rear, enjoying afternoon and evening sun. A patio across the back of the house is ideal for al fresco dining. Steps lead up to an upper lawn and mature fruit orchard, with a large Rhino greenhouse, all enclosed by mature hedgerow. To the side are a heated swimming pool, pump house, large sun terrace and summer house, used as a guest room. Perfect to relax and take in the views. The house benefits from 20 solar panels, providing the power for the pool.







Location

The property lies in a secluded position on the edge of the small village of Weston by Welland, just four miles northeast of Market Harborough and on the Northamptonshire border with Leicestershire in the heart of the Welland Valley. The village is surrounded by beautiful rolling countryside with many country walks available. The village has an excellent pub, the Wheel and Compass, and a parish church. The nearby village of Medbourne offers a general store/Post Office and the recently renovated Nevill Arms, a highly rated coaching inn, restaurant and hotel. Medbourne also has a Sports and Social Club offering an array of sports including football, cricket, tennis, lawn bowls and skittles.

The bustling market town of Market Harborough is just 4 miles distant and dates to the 12th century. It features some beautiful historic architecture, and an attractive town centre. The town has all the necessary day-to-day amenities, as well as a wide choice of shopping and supermarkets, and entertainment and dining options. There is also a leisure centre and

several parks and green spaces, plus a golf course, while the beautiful Leicestershire countryside, and the famous Grand Union Canal are just moments away.

Other recreational opportunities in the area include Rutland Water, set to the north, between Uppingham and Oakham. This provides a myriad of options including sailing, fly fishing, scenic walks and the Rutland Water Cycle Route. In addition, there is a 1000 acre nature reserve with breeding Ospreys amongst other species.

Local transport links are exceptional. The M1 is close-at-hand and Market Harborough station, just 4 miles away and with ample parking, offers regular services on the Midland Main Line, with trains to London St Pancras International from 56 minutes, as well as connections to Leicester, Nottingham, and Sheffield.

Distances

- Market Harborough 4.0 miles
- Uppingham 9.6 miles
- Leicester 12.0 miles
- Oakham 16.7 miles
- Oundle 19.8 miles
- M1 (Junction 20) 20.7 miles

Nearby Stations

- Market Harborough 4.1 miles
- Corby 8.8 miles
- Kettering 13.9 miles
- Leicester 15.5 miles

Key Locations

- Rutland Water
- National Space Centre
- Silverstone Circuit and Museum
- Kilworth House Open Air Theatre

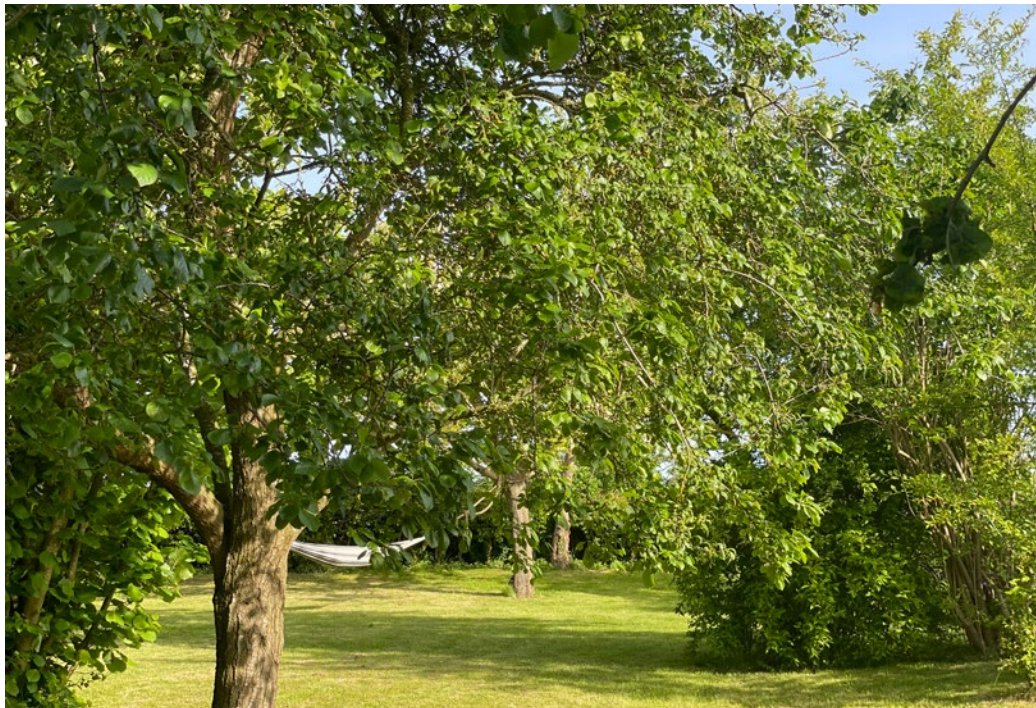
- Farndon Fields Farm Shop

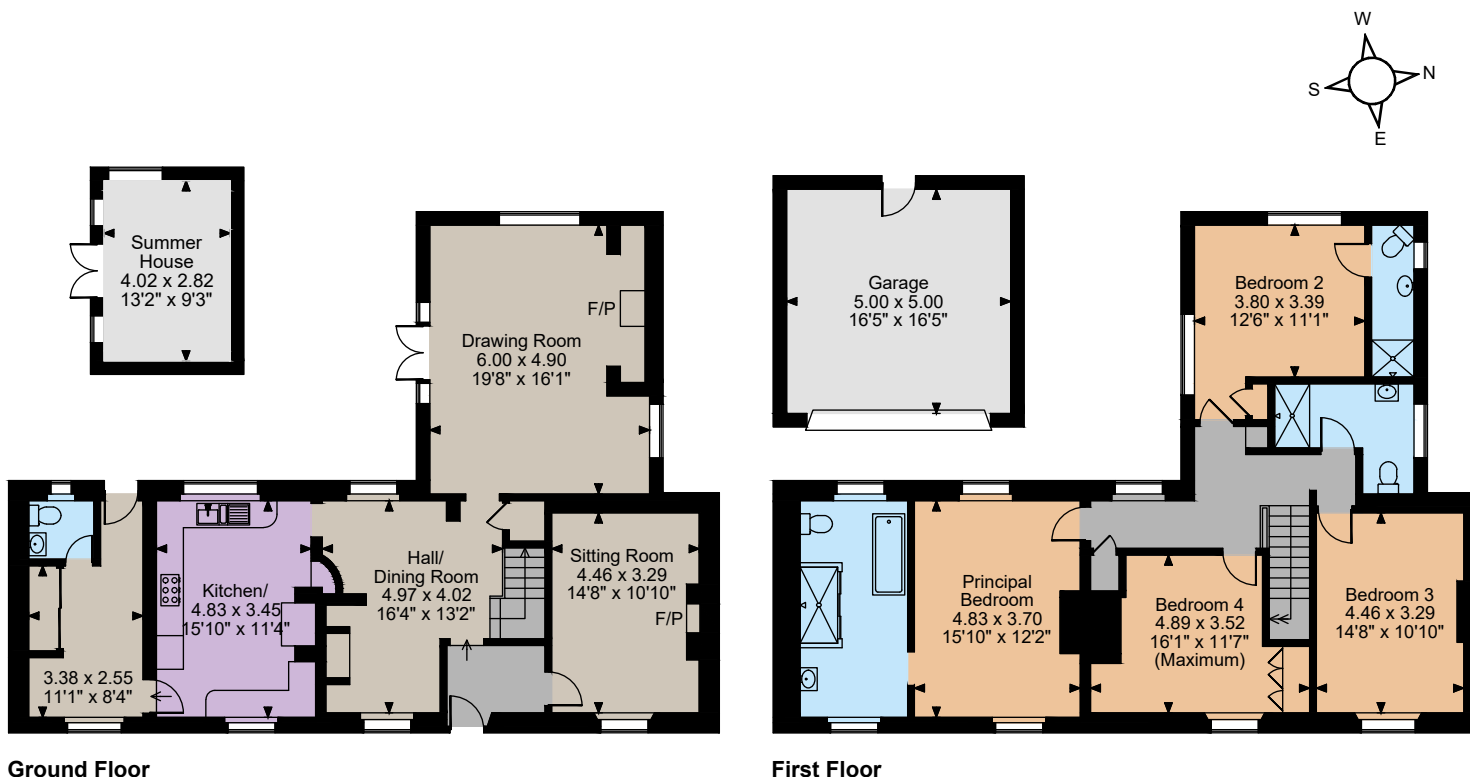
Nearby Schools

- Brooke House College
- Stoneygate School
- Leicester Grammar
- Spratton Hall
- Leicester High School for Girls
- Uppingham
- Oakham
- Oundle









The position & size of doors, windows, appliances and other features are approximate only.
 © ehouse. Unauthorised reproduction prohibited. Drawing ref. dig/8642442/MKB

Floorplans

House internal area: 2,151 sq ft (200 sq m)
 Garage Internal area: 269 sq ft (25 sq m)
 Summer House internal area: 122 sq ft (11 sq m)
 Total internal area: 2,542 sq ft (236 sq m)
 For identification purposes only.

Directions

LE16 8HU
 what3words: ///excavate.straws.dolphin takes you to the driveway

General

Local Authority: North Northamptonshire Council:
 Tel: 0300 126 3000

Services: Mains water, electricity and drainage are connected. Oil-fired centraql heating.

Mobile and Broadband checker: Information can be found here <https://checker.ofcom.org.uk/en-gb/>

Council Tax: Band F

EPC Rating: D

Fixtures and Fittings: As per contract.

Wayleaves and easements: The property is sold subject to any wayleaves or easements, whether mentioned in these particulars or not.

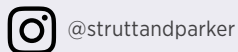
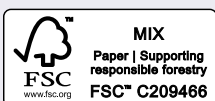
IMPORTANT NOTICE: Strutt & Parker gives notice that: 1. These particulars do not constitute an offer or contract or part thereof. 2. All descriptions, photographs and plans are for guidance only and should not be relied upon as statements or representations of fact. All measurements are approximate and not necessarily to scale. Any prospective purchaser must satisfy themselves of the correctness of the information within the particulars by inspection or otherwise. 3. Strutt & Parker does not have any authority to give any representations or warranties whatsoever in relation to this property (including but not limited to planning/building regulations), nor can it enter into any contract on behalf of the Vendor. 4. Strutt & Parker does not accept responsibility for any expenses incurred by prospective purchasers in inspecting properties which have been sold, let or withdrawn. 5. We are able to refer you to SPF Private Clients Limited ("SPF") for mortgage broking services, and to Alexander James Interiors ("AJI"), an interior design service. Should you decide to use the services of SPF, we will receive a referral fee from them of 25% of the aggregate of the fee paid to them by you for the arrangement of a mortgage and any fee received by them from the product provider. Should you decide to use the services of AJI, we will receive a referral fee of 10% of the net income received by AJI for the services they provide to you. 6. If there is anything of particular importance to you, please contact this office and Strutt & Parker will try to have the information checked for you. Photographs taken April 2025. Particulars prepared April 2025. Strutt & Parker is a trading style of BNP Paribas Real Estate Advisory & Property Management UK Limited

Stamford

5 South View, Tinwell Road, Stamford, PE9 2JL

01780 484 040

stamford@struttandparker.com
 struttandparker.com



Over 50 offices across England and Scotland,
 including Prime Central London

For the finer things in property.

