



# The Old Vicarage

The Plain, Whiteshill, Stroud, Gloucestershire







An exceptional former clergy house seamlessly blending period character with luxurious modern living, set in elevated gardens overlooking Ruscombe Brook.

A beautifully appointed and substantial family home with high-specification interiors, landscaped west-facing gardens and magnificent elevated views over the Ruscombe Brook valley.



**3 RECEPTION ROOMS**



**4/5 BEDROOMS**



**3 BATHROOMS**



**DOUBLE GARAGE**



**0.9 ACRES**



**FREEHOLD**



**VILLAGE**



**6,767 SQ FT**



**O.I.E.O  
£2,000,000**

### The property

The Old Vicarage is a striking former clergy house that has been the subject of an extensive programme of renovations by the present owners. Unlisted, the property perfectly combines period character with high-quality modern design, offering nearly 6,000 sq ft of accommodation over four floors.

No expense has been spared in upgrading this highly individual home. Traditional features such as stone mullioned windows, original fireplaces and exposed beams sit comfortably alongside contemporary details including Crittall-style doors, underfloor heating, bespoke cabinetry and a dramatic oak-and-glass extension that floods the open-plan kitchen/dining/family room with natural light.

The ground floor is designed for both family living and entertaining, with two elegant reception rooms, a welcoming reception hall, a superb kitchen/breakfast room with adjoining walk-in pantry and utility room, and access to the rear terrace. On the lower ground floor, a commercial-standard gym, sauna and steam room add a touch of luxury.

The first floor provides a superb principal suite with en suite shower room and a bespoke dressing room with backlit shelving and extensive cabinetry. A guest suite with its own sitting room and bathroom is perfect for visitors, complemented by a further double bedroom and family shower room.

The top floor is a versatile space featuring a games room, cinema, home office, cloakroom, and useful loft storage — ideal for both entertaining and working from home.









## Outside

Approached via a private driveway screened by mature trees, the property enjoys a high degree of privacy. There is extensive parking to the front and rear, together with a detached garage. The impressive front elevation features attractive stonework and prominent chimneys, while the rear of the house opens directly onto magnificent, landscaped gardens.

The west-facing grounds are terraced across several levels, designed to maximise the stunning views over open countryside. A walled terrace runs the length of the house, providing the perfect setting for alfresco dining. Below, two tiers of lawn are interspersed with mature trees, established borders and a variety of shrubs. A large terrace incorporates a feature pond, further enhancing the tranquillity of this setting.

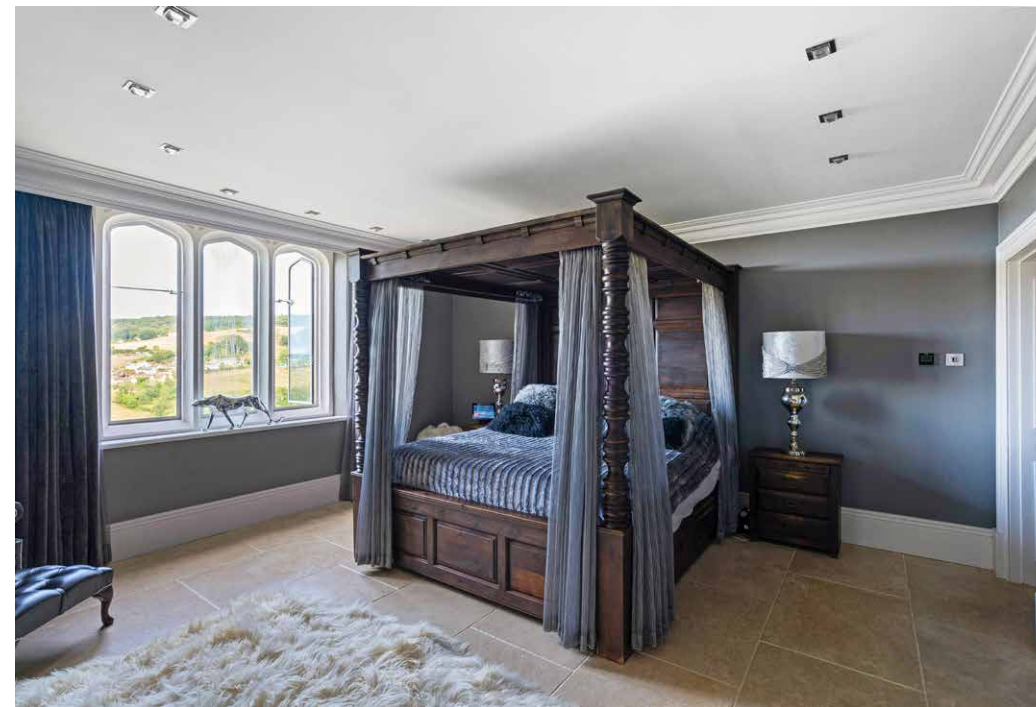
In all, the property sits within grounds of approximately 0.9 acres.

## Location

The Old Vicarage is situated in Whiteshill, a highly regarded village approximately two miles north-east of Stroud. The village offers a strong sense of community with amenities including a primary school, church, pub and community-run shop.

Stroud itself is a thriving market town, well known for its award-winning farmers' market, independent shops and cafés, and a Waitrose supermarket. Mainline rail services from Stroud provide a regular service to London Paddington in around 80-90 minutes. Road links are also excellent, with the M5 (J13) around 6 miles to the west.

The surrounding countryside is renowned for its outstanding natural beauty, with Minchinhampton and Rodborough Commons offering superb walks, and nearby sporting opportunities including golf at Minchinhampton, racing at Cheltenham, sailing at the Cotswold Water Park, polo at Cirencester Park and local rugby and cricket clubs.



## Distances (approx.)

- Whiteshill Primary School – 0.5 miles
- Stroud – 2 miles
- Stroud Railway Station - 1.5 miles
- Marling School – 1.4 miles
- Beaudesert Park School – 5 miles
- Minchinhampton Common – 4 miles
- Cirencester – 13 miles
- Cheltenham – 14 miles
- M5 (J13) – 5.7 miles
- Kemble Station – 11 miles (London Paddington from 75 mins)
- Bristol Airport – 41 miles
- London Heathrow – 96 miles

## Nearby Schools

- Primary: Whiteshill C of E Primary School (0.5 miles)
- Secondary: Marling School (Outstanding), Stroud High School, Thomas Keble School
- Independent: Beaudesert Park, Wycliffe College, Westonbirt, Cheltenham College, Marlborough College

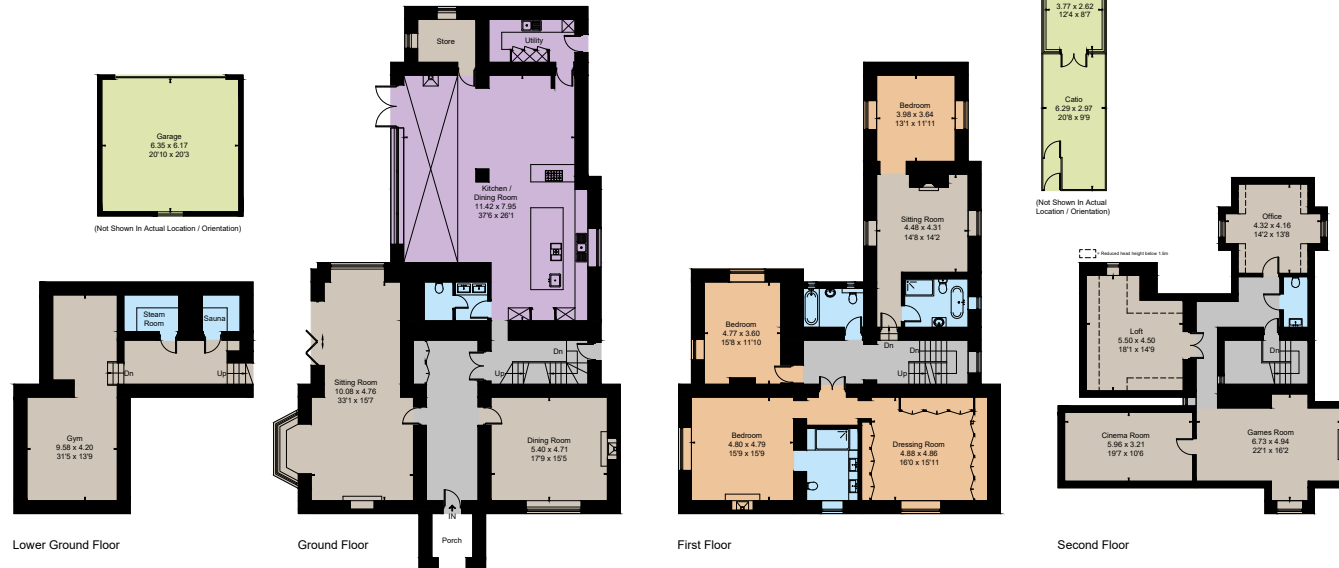








Approximate Floor Area = 576.3 sq m / 6203 sq ft  
 Outbuildings = 52.4 sq m / 564 sq ft  
 Total = 628.7 sq m / 6767 sq ft (Excluding Catio/ Including Loft)



This floor plan has been drawn in accordance with RICS Property Measurement 2nd edition.  
 All measurements, including the floor area, are approximate and for illustrative purposes only. @fourwalls-group.com #96030



**Floorplans**  
**Main House internal area 6,203 sq ft (576.3 sq m)**  
 For identification purposes only.

**Directions**  
 what3words: ///elated.shook.bends

**General**  
 Local Authority: Stroud District Council

**Mobile and Broadband checker:** Information can be found here <https://checker.ofcom.org.uk/en-gb/>

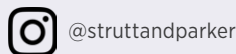
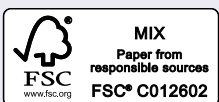
**Services:** Mains water, electricity, gas and drainage

**Council Tax:** Band G

**EPC Rating:** C

**IMPORTANT NOTICE:** Strutt & Parker gives notice that: 1. These particulars do not constitute an offer or contract or part thereof. 2. All descriptions, photographs and plans are for guidance only and should not be relied upon as statements or representations of fact. All measurements are approximate and not necessarily to scale. Any prospective purchaser must satisfy themselves of the correctness of the information within the particulars by inspection or otherwise. 3. Strutt & Parker does not have any authority to give any representations or warranties whatsoever in relation to this property (including but not limited to planning/building regulations), nor can it enter into any contract on behalf of the Vendor. 4. Strutt & Parker does not accept responsibility for any expenses incurred by prospective purchasers in inspecting properties which have been sold, let or withdrawn. 5. We are able to refer you to SPF Private Clients Limited ("SPF") for mortgage broking services, and to Alexander James Interiors ("AJI"), an interior design service. Should you decide to use the services of SPF, we will receive a referral fee from them of 25% of the aggregate of the fee paid to them by you for the arrangement of a mortgage and any fee received by them from the product provider. Should you decide to use the services of AJI, we will receive a referral fee of 10% of the net income received by AJI for the services they provide to you. 6. If there is anything of particular importance to you, please contact this office and Strutt & Parker will try to have the information checked for you. Photographs taken August 2025. Particulars prepared August 2025. Strutt & Parker is a trading style of BNP Paribas Real Estate Advisory & Property Management UK Limited

**Cirencester**  
 15 Dyer Street, Cirencester, GL7 2PP  
**01285 653101**  
 cirencester@struttandparker.com  
 struttandparker.com



For the finer things in property.

