



Cedar View House, Fenny Compton, Warwickshire

For the finer things in property.

**STRUTT
& PARKER**

BNP PARIBAS GROUP 

Cedar View House

The Slade

Fenny Compton

Warwickshire

CV47 2YB

An expansive and modern barn conversion in an edge of village setting.

M40 (J12) 3.5 miles, Banbury 8.5 miles, Stratford-upon-Avon 15 miles, Banbury to London Marylebone about 50 minutes

Open plan entrance hall, kitchen/diner and sitting room | Principal bedroom with en suite bathroom | 5 Further double bedrooms (4 en suite) | WC | Garden | Car port | EPC Rating C

The property

Cedar View House is an immaculately presented and recently renovated barn conversion with over 3,000 sq ft of accommodation and a large south facing garden.

Upon entering the property you are greeted by a large, bright and open plan entrance hall with a fitted and open plan kitchen/diner with large central island to the side. With the ground floor accommodation being primarily open plan the house is set up very well for entertaining and has a substantial sitting room with doors to the garden.

A WC and four double bedrooms all with an en suite shower or bathroom, complete the ground floor accommodation. On the first floor there are a further two bedrooms with en suites and a galleried landing.

Outside

Enclosed by a part brick part fenced wall, Cedar View House overlooks its rear garden which is mainly laid to lawn, has several terraces and off road parking with a double, oakframed carport. A five-bar gate keeps the garden enclosed.

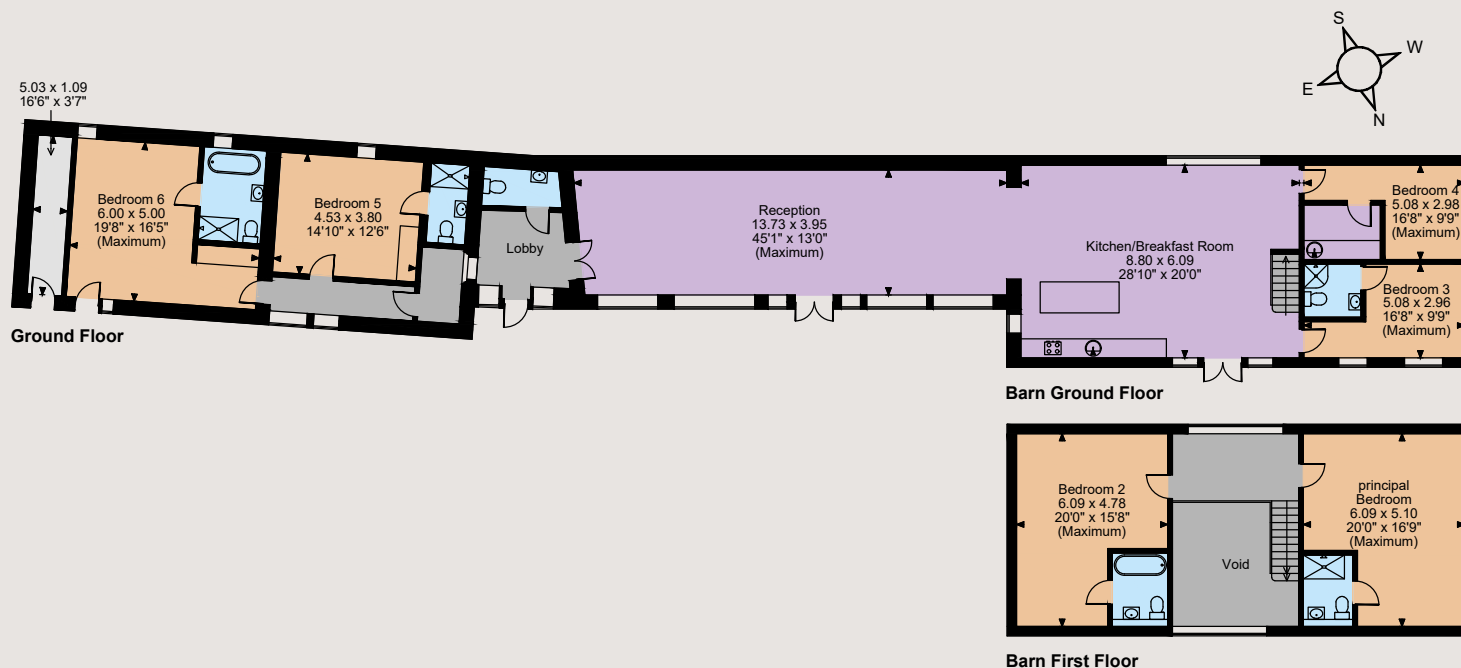
Location

Picturesque Fenny Compton lies to the north of the market town of Banbury at the foot of the Burton Dassett hills. Local amenities include a convenience store, post office and public house, along with a primary school and a health centre. A comprehensive range of facilities can be found in nearby Banbury including the Castle Quay Shopping Centre, twice weekly market and leisure amenities at the Spiceball Park Sports Centre. For commuters, the mainline railway station offers connections to London, Manchester, Birmingham and Oxford and roadusers are within easy reach of the M40 which provides access to the major road networks. There is good selection of independent schools in the vicinity including Winchester House, Carrdus, St. John's Priory and Bloxham School.





Floorplans
House internal area 3,183 sq ft (296 sq m)
For identification purposes only.



The position & size of doors, windows, appliances and other features are approximate only.
© ehouse. Unauthorised reproduction prohibited. Drawing ref. dig/8566088/SS



Directions

From Banbury take the A423 north towards Southam. Take the first turning to Farnborough. Follow the road through the lower end of the village. Take the first right hand turn sign posted Fenny Compton. Follow the road to the cross roads and take a right hand turn down the hill. Upon entering the village take a right hand turn on to The Slade and follow the road until you find the entrance to the property on the righthand side.

General

Local Authority: Stratford Upon Avon
Services: Mains electricity, water, Biopure Drainage Tank, air source heat pump.
Council Tax: Band F
Tenure: Freehold
Guide Price: £1,075,000

Banbury

Bloxham Mill, Barford Road, Bloxham, OX15 4FF
01295 273592

banbury@struttandparker.com
struttandparker.com

@struttandparker

/struttandparker

Over 45 offices across England and Scotland,
including Prime Central London

IMPORTANT NOTICE: Strutt & Parker gives notice that: 1. These particulars do not constitute an offer or contract or part thereof. 2. All descriptions, photographs and plans are for guidance only and should not be relied upon as statements or representations of fact. All measurements are approximate and not necessarily to scale. Any prospective purchaser must satisfy themselves of the correctness of the information within the particulars by inspection or otherwise. 3. Strutt & Parker does not have any authority to give any representations or warranties whatsoever in relation to this property (including but not limited to planning/building regulations), nor can it enter into any contract on behalf of the Vendor. 4. Strutt & Parker does not accept responsibility for any expenses incurred by prospective purchasers in inspecting properties which have been sold, let or withdrawn. 5. We are able to refer you to SPF Private Clients Limited ("SPF") for mortgage broking services, and to Alexander James Interiors ("AJI"), an interior design service. Should you decide to use the services of SPF, we will receive a referral fee from them of 25% of the aggregate of the fee paid to them by you for the arrangement of a mortgage and any fee received by them from the product provider. Should you decide to use the services of AJI, we will receive a referral fee of 10% of the net income received by AJI for the services they provide to you. 6. If there is anything of particular importance to you, please contact this office and Strutt & Parker will try to have the information checked for you. Photographs taken July 2023. Particulars prepared September 2023. Strutt & Parker is a trading style of BNP Paribas Real Estate Advisory & Property Management UK Limited



For the finer things in property.

