



# STOUR PROVOST MANOR

---

STOUR PROVOST, DORSET

---

A significant, late-Georgian country house set in about four acres bordering the River Stour, with uninterrupted countryside views, guest cottage and outbuildings.

---

Stour Provost Manor, The Street, Stour Provost, Gillingham, Dorset SP8 5RZ

A30 1.2 miles, Marnhull 2.5 miles, Gillingham (Waterloo 2 hours) 3.9 miles, Sturminster Newton 5.7 miles, Shaftesbury 6 miles, A303 9.6 miles, Castle Cary station (Paddington 90 minutes) 16.8 miles, Bournemouth International Airport 32.6 miles (All distances and times are approximate)

---

### *Features:*

#### *Lot 1*

**Main House:** Entrance hallway | Reception hall | Drawing room  
Dining room | TV room | Study | Kitchen/breakfast room | Laundry room  
Back hall | Cloakrooms | Substantial cellarage and plant room

Principal bedroom with en suite, combined dressing room, bathroom & shower  
Guest bedroom with en suite bathroom | Further double bedroom with dual-access bathroom | Three further double bedrooms | Two shower rooms

**Outside:** Range of outbuildings including thatched stable block providing storage | Exterior undercover storage | Ice room | Garaging for three cars  
Attractive gardens bordering the River Stour | Heated swimming/jacuzzi pool  
Hard tennis court | Woodland copse with trout pond  
Kitchen garden | Two paddocks

About 4.11 acres

---

#### *Lot 2 (Available by separate negotiation)*

**Coachman's Cottage:** Entrance hall | Sitting room | Dining room | Kitchen  
Cloakroom | Three double bedrooms | Family bathroom  
Separate driveway with extensive parking





### *The property*

Stour Provost Manor is in a private setting off a no-through lane on the edge of the pretty village of Stour Provost. This historic village has a church and village hall but for immediate needs the large village of Marnhull is close by and has excellent amenities including two primary schools, combined GP surgery and pharmacy, garage, two pubs and several local shops (see [www.marnhullmessenger.org.uk](http://www.marnhullmessenger.org.uk)). More extensive shopping, business and recreational facilities are available nearby in Sturminster Newton, Gillingham and Shaftesbury. The local area has good transport links too with direct rail services from Gillingham to London Waterloo in approximately two hours and from Castle Cary to Paddington in approximately 90 minutes. The A30 and A303 are both easily accessible and Bristol, Bournemouth and Exeter airports all within a reasonable driving distance. The wider, local area is renowned for its wide choice of excellent schools from both the state and independent sectors. The selection from the latter within a 15 mile radius include Port Regis, Clayesmore, Hanford, the Sherborne schools, Knighton House, Bryanston, Hanford, the Bruton schools, Hazelgrove and Milton Abbey.

Stour Provost Manor represents one of the county's most elegant and impressive country homes and is in a truly glorious setting looking out over beautiful and unspoilt countryside of the Stour Vale, which was originally laid out as parkland below The Manor in Fifehead Magdalen. Stour Provost Manor was built around 1828 of local stone under low-pitched slate roof with wide eaves and is a stone's throw from the pretty, 14th century parish church. It displays all the elegance of the late Georgian period with a pilastered porch, beautifully proportioned rooms, high ceilings and tall sash windows that look out across the formal gardens towards the unspoilt, rural views across the valley. It has three principal reception rooms grouped around the reception hall that allows plentiful natural light to flood the centre of the house.

It is Grade II listed and has retained numerous fireplaces, plentiful original joinery including working shutters, coving and an elegant sweeping main staircase. The house has been the family home of the current owners for the past ten years and during that time, significant improvements have been undertaken coupled with an extensive programme of refurbishment to create a most stylish and elegant family home. Particular features of note include the wonderful kitchen/breakfast room, which serves as the central hub of the house and has a large dining area with floor to ceiling French windows opening onto the terrace. The kitchen is fitted with beautiful cabinetry, hand-made from a sumptuous mix of burr elm, cherry and maple. The principal bedroom suite, which has an en suite combined bathroom and dressing room, is positioned to catch the sun throughout the day from early morning, with windows on three sides that look out across the grounds to the river and beyond. In addition, there are five further double bedrooms, two of which have en suite bathrooms and two shower rooms.

### *Coachmans Cottage & outbuildings*

Available separately as Lot 2 and situated at the end of the back drive is Coachman's Cottage. Like the main house, it has been completely refurbished to a very high standard and currently serves both as a guest cottage and as a holiday rental cottage listed on Airbnb. The cottage has two good-sized reception rooms, a fully fitted kitchen, three double bedrooms, bathroom and cloakroom and its own, private garden. A short distance from the main house and accessed via a short spur from the parking area is a range of stone-built period outbuildings comprising an ice house, single garage (former coach house) with hay loft and adjacent machinery store, thatched stable block with integral tack room, log store and double garage. Beyond the outbuildings are the vegetable garden, greenhouse and a paddock.









### *Garden, grounds, and land*

Stour Provost Manor is approached via impressive iron gates and down a driveway, which leads to an extensive gravelled parking area with a central circular turning circle in front of the house. The formal gardens extend out on the southern and western sides of the house and comprise a series of tiered lawns, partly walled with borders stocked with numerous roses, herbaceous perennials and flowering shrubs. On the highest level is a heated swimming/jacuzzi pool beside a wrought iron pergola, whilst below is the croquet lawn with steps leading up to the terrace, which extends around to a further, recently built stone terrace with water fountain at its centre. This overlooks the hard tennis court and lower lawn, which slopes gently down to the River Stour that forms the property's northern boundary. Due to the weir further downstream, the river at this point flows gently and is wide enough and of sufficient depth for wild swimming. At the south-western end of the garden is a copse of mature poplar and willow trees surrounding a trout pond. Adjacent to the copse and accessed via a short lane is a further

paddock running down to the river and bound by post and rail fencing with a field shelter. In all the garden and grounds extend to about 4.11 acres.

### *History*

The village of Stour Provost was part of several thousand acres given by King Henry VI to King's College, Cambridge. The main range of the manor was built in 1828 for John Tomkyns, the former Vice-Provost of King's College, when he became the Rector, with the service range possibly added slightly later. It replaced the medieval rectory, which stood in what is now the kitchen garden and was demolished. It appears that the architect was William Wilkins, the Professor of Architecture at the Royal Academy and is best known as the architect responsible for many important buildings in the early 19th century, particularly in the Greek Revival style (such as Downing College, Cambridge, University College London, St. George's Hospital, Hyde Park, The National Gallery, London and Grange Park, Hampshire).



*Cottage (Lot 2 Available by separate negotiation)*





As Vice-Provost, Tomkyns had worked with Wilkins for some time on new building work in King's College, including the entrance screen and gateway adjacent to the Chapel. The design of the manor closely reflected that of the house Wilkins built for himself in Cambridge, which was demolished in 1955. In the rural disturbances of 1830, Tomkyns lowered the tithes to assist the poor. On the night of 29 November 1830 there was a riot in the village and Tomkyns persuaded the rioters not to destroy the rectory. However, arrests were made and the prisoners were detained under guard in a public house overnight as the keys of the Shaftesbury lock-up were inexplicably missing. At the subsequent trial held at Dorchester Assizes in January 1831, two of those arrested were convicted and sentenced to deportation to Australia for seven years.

#### *Directions*

(SP8 5RZ) what3words///sparrows.author.  
lurching From Gillingham take the B3092 for 1½ miles until you reach East Stour. Travel through the village to the crossroads with the A30. Cross over the A30. Continue on the B3092 for 1 mile and then turn right on to Church Lane, signed to Stour Provost. After about 200 yards turn right into The Street and main driveway entrance to Stour Provost Manor will be found after 200 yards on the left, about 80 yards past the no-through road sign.

#### *General*

**Services:** Mains water and electricity. Oil-fired central heating. Bottled gas for breakfast room fire. Private drainage (we are unaware whether this is compliant to current regulations)

**Rights of Way:** There is a footpath crossing the far paddock. Please refer to the agents for further information.

**Tenure:** Freehold

**Local Authority:** Dorset Council  
([www.dorsetcouncil.gov.uk](http://www.dorsetcouncil.gov.uk)).

**Council Tax:** Band H  
Coachman's Cottage Band D

**Guide Price:** Lot 1 £4,500,000

**EPC:** E



*The Street Stour Provost, Gillingham, Dorset*

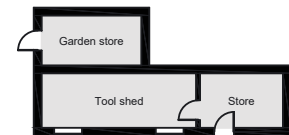
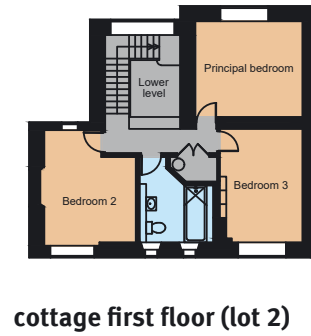
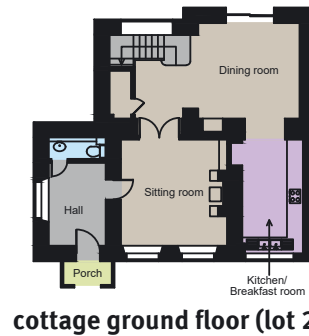
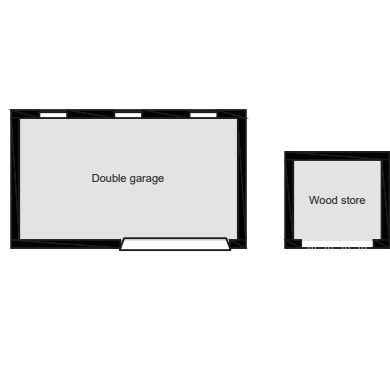
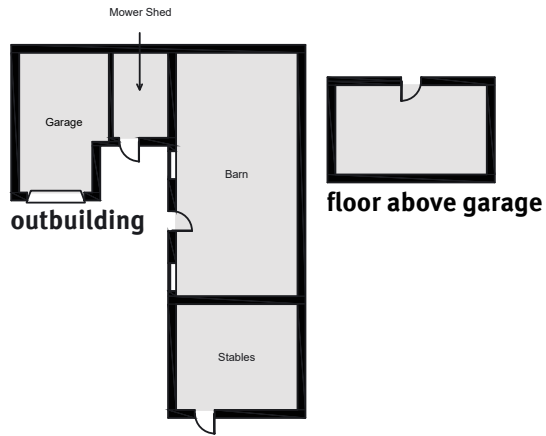
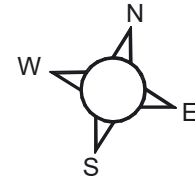
Main House = 783sq.m (8,427sq.ft)

Garages = 74sq.m (797sq.ft)

Outbuilding = 107sq.m (1,147sq.ft)

Cottage = 133sq.m (1,432sq.ft)

Total = 1,097sq.m (11,803sq.ft)



*Strutt & Parker London*  
43 Cadogan St, London SW3 2PR

+44 (0) 20 7591 2213  
london@struttandparker.com  
struttandparker.com

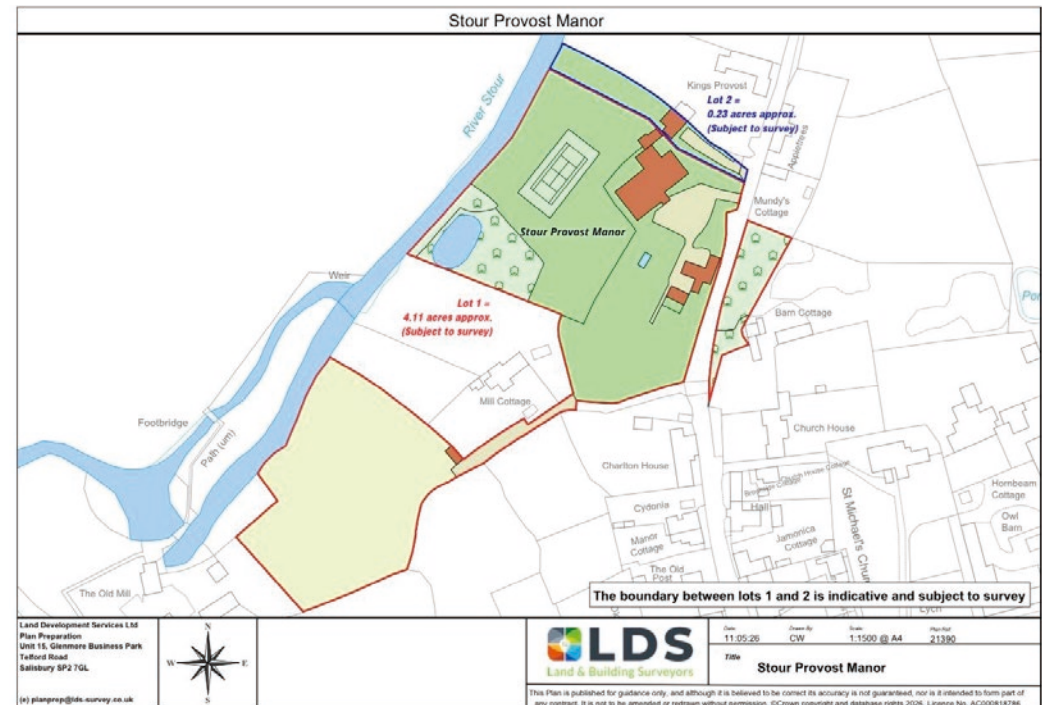
*Strutt & Parker Salisbury*  
41 Milford St, Salisbury SP1 2BP

+44 (0) 1722 638305  
salisbury@struttandparker.com  
struttandparker.com

Over 45 offices across England  
and Scotland, including Prime  
Central London



IMPORTANT NOTICE: Strutt & Parker gives notice that: 1. These particulars do not constitute an offer or contract or part thereof. 2. All descriptions, photographs and plans are for guidance only and should not be relied upon as statements or representations of fact. All measurements are approximate and not necessarily to scale. Any prospective purchaser must satisfy themselves of the correctness of the information within the particulars by inspection or otherwise. 3. Strutt & Parker does not have any authority to give any representations or warranties whatsoever in relation to this property (including but not limited to planning/building regulations), nor can it enter into any contract on behalf of the Vendor. 4. Strutt & Parker does not accept responsibility for any expenses incurred by prospective purchasers in inspecting properties which have been sold, let or withdrawn. 5. We are able to refer you to SPF Private Clients Limited ("SPF") for mortgage broking services, and to Alexander James Interiors ("AJI"), an interior design service. Should you decide to use the services of SPF, we will receive a referral fee from them of 25% of the aggregate of the fee paid to them by you for the arrangement of a mortgage and any fee received by them from the product provider. Should you decide to use the services of AJI, we will receive a referral fee of 10% of the net income received by AJI for the services they provide to you. 6. If there is anything of particular importance to you, please contact this office and Strutt & Parker will try to have the information checked for you. Photographs taken November 2023. Particulars prepared May 2026. Strutt & Parker is a trading style of BNP Paribas Real Estate Advisory & Property Management UK Limited





STRUTT & PARKER