

Topeka,
Willingale,
Essex



Strutt
& Parker

Land and property. Since 1885.

An outstanding detached five-bedroom home with contemporary accommodation and generous private gardens, set in the desirable village of Willingale.

The property

Topeka is an impressive, detached family home offering five bedrooms and beautifully appointed accommodation, set in the desirable village of Willingale. Attractive, white-rendered elevations complement extensive west-facing gardens, while internally the property combines bespoke contemporary finishes with clean, neutral décor to create a bright and welcoming atmosphere throughout.

The ground floor features three beautifully presented reception rooms, including the magnificent 42ft open-plan kitchen and dining room at the rear of the house. This exceptional living and entertaining space opens onto the gardens via sliding glass doors, flooding the room with natural light, and incorporates a sleek contemporary kitchen with fitted units, integrated appliances and a central island with breakfast bar. A well-proportioned utility room provides additional storage and appliance space. The sitting room and family room offer further areas in which to relax, with the latter opening onto a private courtyard garden. There is also a double bedroom on the ground floor, ideal for guests, complete with built-in wardrobes and an en suite shower room.

Upstairs, four further double bedrooms are arranged around the landing, including the luxurious principal suite with a dressing room and en suite shower room featuring a walk-in rainfall shower. A further bedroom also benefits from a dressing room and en suite shower room, while the remaining bedrooms are served by a family bathroom with a freestanding bathtub and wet-room-style shower.



Outside

To the front, a gravel driveway provides ample parking. The rear gardens extend to approximately 300ft and enjoy a sunny west-facing aspect. Bordered by mature trees, they include extensive lawns, a generous terrace for outdoor entertaining and a heated swimming pool. Additional outbuildings include a summer house and a detached studio, ideal for home working.

Location

Willingale is a charming and picturesque Essex village surrounded by attractive countryside, offering a peaceful rural lifestyle while remaining well connected. Everyday amenities can be found in nearby Ongar, approximately 6 miles away, which provides a range of shops, supermarkets, cafés and services, while the larger centres of Brentwood, Chelmsford and Epping offer extensive retail, leisure and dining facilities. The area is well regarded for schooling, with respected independent options including Felsted School, New Hall School and Brentwood School, while highly sought-after grammar schools such as Chelmsford County High School for Girls and King Edward VI Grammar School in Chelmsford are also accessible. Transport links to the area include the M11 which is 10 miles away, fast rail services to London Liverpool Street from Chelmsford mainline station (35 minutes), and Stansted Airport just 16 miles away.

Postcode region: CM5

General

Local Authority: Epping Forest District Council

Services: All mains services connected.

Council Tax: Band G

EPC Rating: D

Mobile and Broadband checker: Information can be found here <https://checker.ofcom.org.uk/en-gb/>

Agents note

The current custodians of Topeka could see amazing potential in this 1970s family home when they first visited the house back in 2023. The sheer work and effort that has gone into this building soon becomes evident upon arrival. Our clients' vision to recreate a stylish, modern family home, with a bright and airy flow, is truly visionary.

3,516 sq ft (327 sq m)

3 reception rooms

5 bedrooms

4 bathrooms

Swimming pool

Outside parking

Freehold

Village

Guide price £1,650,000

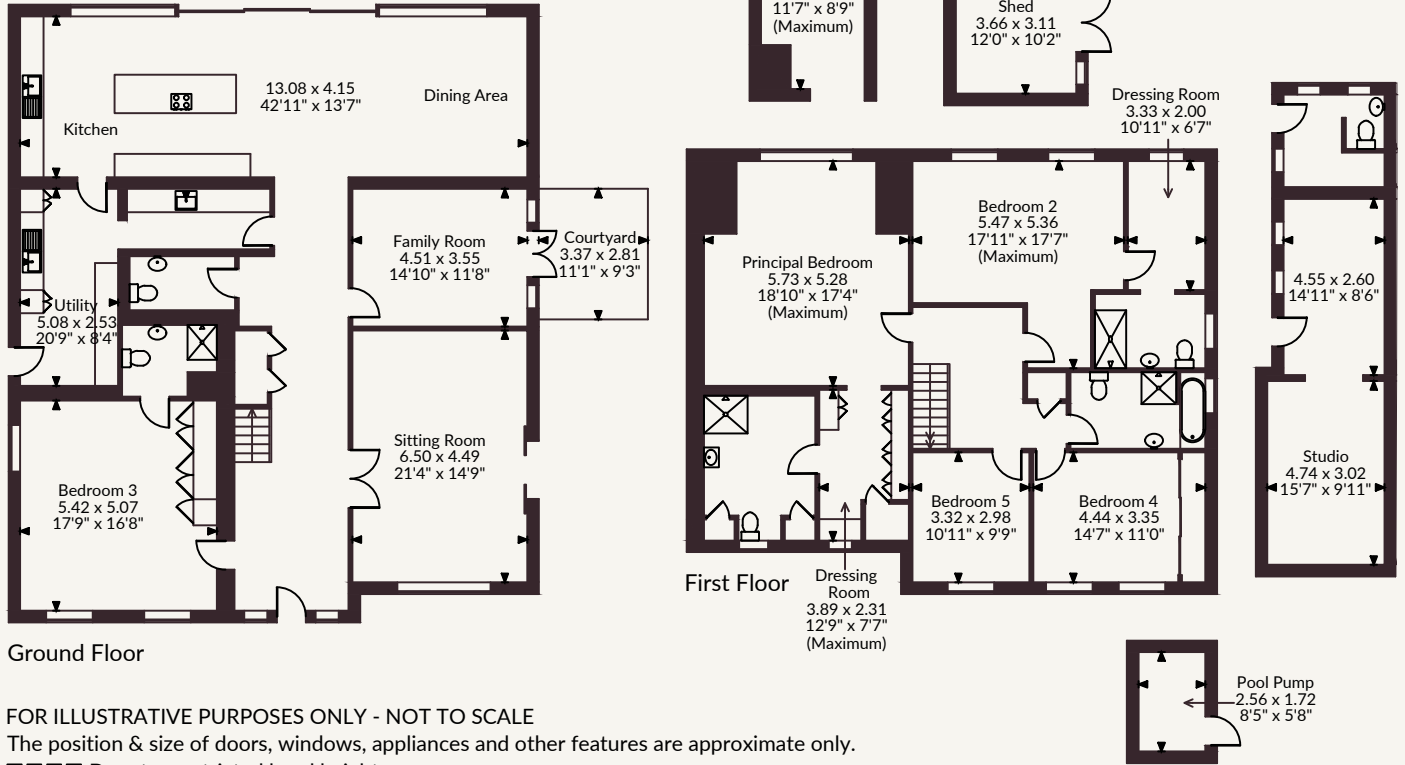
Topeka The Village, Willingale

Main House internal area 3,516 sq ft (327 sq m)

Studio internal area 361 sq ft (34 sq m)

Store, Pool Pump & Shed internal area 262 sq ft (24 sq m)

Total internal area 4,139 sq ft (385 sq m)



Strutt & Parker Chelmsford

Saxon House, 27 Duke Street, Chelmsford, Essex, CM1 1HT

01245 254600 | chelmsford@struttandparker.com



@struttandparker struttandparker.com

Strutt & Parker

Land and property. Since 1885.

IMPORTANT NOTICE: Strutt & Parker gives notice that: 1. These particulars do not constitute an offer or contract or part thereof. 2. All descriptions, photographs and plans are for guidance only and should not be relied upon as statements or representations of fact. All measurements are approximate and not necessarily to scale. Any prospective purchaser must satisfy themselves of the correctness of the information within the particulars by inspection or otherwise. 3. Strutt & Parker does not have any authority to give any representations or warranties whatsoever in relation to this property (including but not limited to planning/building regulations), nor can it enter into any contract on behalf of the Vendor. 4. Strutt & Parker does not accept responsibility for any expenses incurred by prospective purchasers in inspecting properties which have been sold, let or withdrawn. 5. We are able to refer you to SPF Private Clients Limited ("SPF") for mortgage broking services, and to Alexander James Interiors ("AJI"), an interior design service. Should you decide to use the services of SPF, we will receive a referral fee from them of 25% of the aggregate of the fee paid to them by you for the arrangement of a mortgage and any fee received by them from the product provider. Should you decide to use the services of AJI, we will receive a referral fee of 10% of the net income received by AJI for the services they provide to you. 6. If there is anything of particular importance to you, please contact this office and Strutt & Parker will try to have the information checked for you. Strutt & Parker is a trading style of BNP Paribas Real Estate Advisory & Property Management UK Limited. Photographs taken June 2026. Particulars prepared June 2026.