



The image shows a bright, modern living room. In the center is a white marble fireplace with a black interior. Above the mantel are two green candles in silver holders. To the left and right of the fireplace are tall, white built-in shelving units. Each unit has a cabinet at the bottom and several open shelves above. On the left shelf, there are books and a lamp. On the right shelf, there is a book and a lamp. In front of the fireplace is a low, rectangular coffee table with a striped fabric top. On the table are some magazines and a glass. To the right of the coffee table is a yellow armchair with a yellow blanket draped over it. To the left is a long, low, upholstered bench with dark wood legs. The floor is made of light-colored wood. On the right side of the image, there is a large window with dark curtains and a white radiator cover with a lattice pattern. The text 'Tregunter Road' is overlaid in the center of the image, with 'CHELSEA SW10' below it.

# *Tregunter Road*

CHELSEA SW10





*A stunning first-floor apartment with three double bedrooms, set on this highly sought-after street in Chelsea*

Beautifully proportioned and bathed in natural light, this three-double-bedroom home showcases an elegant blend of period charm and contemporary refinement.

The impressive reception room is a true highlight, featuring exquisite original detailing, soaring ceilings and a delightful outlook onto the surrounding architecture. The adjacent kitchen/dining room has been thoughtfully designed for both everyday living and entertaining, offering a sophisticated yet welcoming space.









The principal bedroom suite is notably spacious, enhanced by a dramatic bay window, exceptional ceiling height and extensive bespoke wardrobes. Two further double bedrooms provide excellent versatility, with one benefitting from a stylish en-suite bathroom, complemented by an additional well-appointed shower room.

A rare advantage of this property is the opportunity to apply for access to the exclusive Boltons Garden Enclosures – an exceptional private garden square just moments away.

Offering a superb balance of elegance, scale and location, this is a truly outstanding Chelsea apartment.

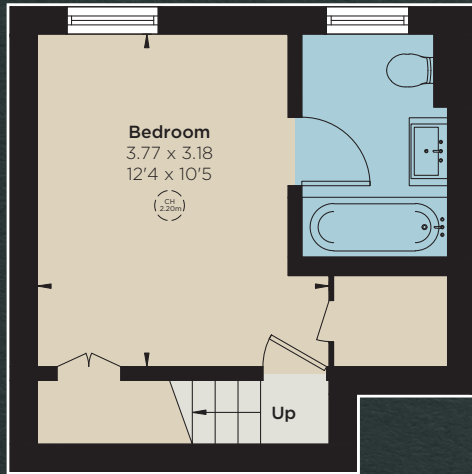
### *Key Features*

- Three bedrooms
- Reception room
- Two bathrooms
- Guest cloakroom
- Flat
- First floor



### *Location*

Tregunter Road is an exceptional prime residential address in the heart of the Boltons Conservation area, principally made up of substantial family houses, and located around the corner from The Little Boltons, The Boltons and Gilston Road. The location also affords easy access to the M4, M3 and Heathrow Airport.



Split Level First Floor



First Floor

## Approximate Floor Area

1,239 sq ft / 115.1 sq m

CH: Ceiling height

This floor plan has been drawn in accordance with RICS Property Measurement 2nd edition. All measurements, including the floor area, are approximate and for illustrative purposes only.

This plan has been supplied to  
The Brochure by Strutt & Parker

**Tenure**  
Leashold expiring  
on 01.01.2201 plus  
share of freehold

**Ground Rent**  
Peppercorn

**Service Charge**  
£5,600 per annum

**Local Authority**  
Royal Borough  
of Kensington  
and Chelsea

**Council Tax**  
Band G

**Parking**  
Residents' permit

**Broadband**  
Installed at the  
property

**EPC**  
Rating C

**Asking Price**  
£2,350,000



**IMPORTANT NOTICE:** Strutt & Parker gives notice that: 1. These particulars do not constitute an offer or contract or part thereof. 2. All descriptions, photographs and plans are for guidance only and should not be relied upon as statements or representations of fact. All measurements are approximate and not necessarily to scale. Any prospective purchaser must satisfy themselves of the correctness of the information within the particulars by inspection or otherwise. 3. Strutt & Parker does not have any authority to give any representations or warranties whatsoever in relation to this property (including but not limited to planning/building regulations), nor can it enter into any contract on behalf of the Vendor. 4. Strutt & Parker does not accept responsibility for any expenses incurred by prospective purchasers in inspecting properties which have been sold, let or withdrawn. 5. We are able to refer you to SPF Private Clients Limited ("SPF") for mortgage broking services, and to Alexander James Interiors ("AJI"), an interior design service. Should you decide to use the services of SPF, we will receive a referral fee from them of 25% of the aggregate of the fee paid to them by you for the arrangement of a mortgage and any fee received by them from the product provider. Should you decide to use the services of AJI, we will receive a referral fee of 10% of the net income received by AJI for the services they provide to you. 6. If there is anything of particular importance to you, please contact this office and Strutt & Parker will try to have the information checked for you. Photographs taken **November 2025**. Particulars prepared **November 2025**. Strutt & Parker is a trading style of BNP Paribas Real Estate Advisory & Property Management UK Limited. 25/11/25 S&P-251117-10-JF

**Chelsea SW10**

140 Fulham Road, SW10 9PY

**+44 (0)20 7373 1010**

chelseasw10@struttandparker.com  
struttandparker.com

THE BROCHURE



@struttandparker

Over 50 offices across England and  
Scotland, including Prime Central London

**For the finer things in property.**

