

Upper Phillimore Gardens Kensington



Strutt
& Parker

Land and property. Since 1885.

A stunning two-bedroom, two-bathroom apartment located on one of the finest roads in Kensington.

A well-presented two-bedroom, two-bathroom apartment located on the second floor of an imposing period house.

This well-balanced accommodation measures approximately 1,041 sq ft and briefly comprises an entrance hall, an L-shaped reception with feature fireplace, large sash windows, and more than enough space to dine. The reception room leads on to a modern and functional, semi-open plan kitchen.

There is a quiet principal bedroom with a full wall of built in storage and an en-suite bathroom, a good-sized double bedroom, and a bathroom.



Location

Upper Phillimore Gardens is a quiet residential street on the prestigious Phillimore Estate. The house is situated in between Kensington High Street and Notting Hill, which both offer plenty of shops, restaurants, and cafes. Kensington Gardens and Holland Park are a stone's throw away. The nearest underground stations are Kensington High Street (District and Circle lines) and Notting Hill (District, Circle and Central lines). Motorists will benefit from rapid routes to the West and Heathrow Airport via M4.

Postcode region: W8

General

Tenure: 22nd March 2107 - Upon completion the purchaser will be granted a new 999-year lease with a Share of Freehold
Local Authority: The Royal Borough of Kensington and Chelsea
Council Tax: Band H
EPC Rating: D
Service Charge: £3,340 per annum
Ground Rent: Peppercorn
Parking: Resident permit
Mobile coverage and broadband: Information can be found here: <https://checker.ofcom.org.uk/en-gb/mobile-coverage>

1,041 sq ft (96.76 sq m)
Period conversion
3.05m ceiling height
Feature fireplace
Prestigious location
Share of freehold

Guide price £2,175,000



Upper Phillimore Gardens, W8

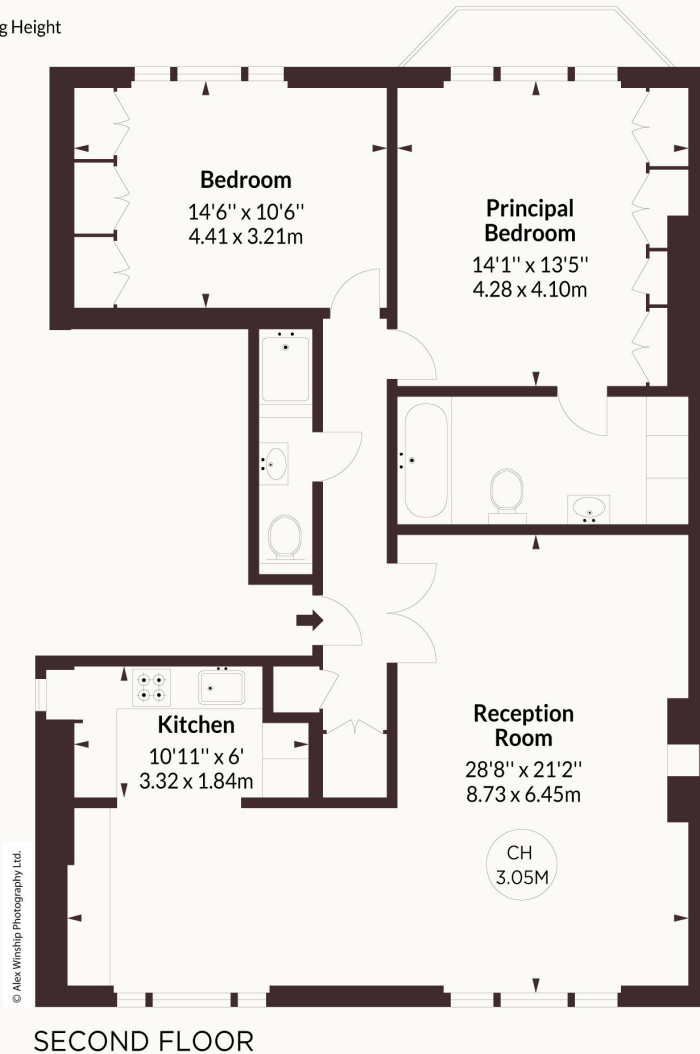
APPROX. GROSS INTERNAL AREA *
1041 Sq Ft - 96.76 Sq M

This floorplan is for GUIDANCE ONLY and NOT FOR VALUATION purposes.



Key:

CH - Ceiling Height



ALEX
WINSHIP
Photography

*Floorplan for guidance only, not to scale or valuation purposes. Measurements are approximate and have been prepared in accordance with the current edition of the RICS Code of Measuring Practice.



Strutt & Parker Kensington

103 Kensington Church Street, London W8 7LN

020 7938 3666 | kensington@struttandparker.com



@struttandparker

struttandparker.com

IMPORTANT NOTICE: Strutt & Parker gives notice that: 1. These particulars do not constitute an offer or contract or part thereof. 2. All descriptions, photographs and plans are for guidance only and should not be relied upon as statements or representations of fact. All measurements are approximate and not necessarily to scale. Any prospective purchaser must satisfy themselves of the correctness of the information within the particulars by inspection or otherwise. 3. Strutt & Parker does not have any authority to give any representations or warranties whatsoever in relation to this property (including but not limited to planning/building regulations), nor can it enter into any contract on behalf of the Vendor. 4. Strutt & Parker does not accept responsibility for any expenses incurred by prospective purchasers in inspecting properties which have been sold, let or withdrawn. 5. We are able to refer you to SPF Private Clients Limited ("SPF") for mortgage broking services, and to Alexander James Interiors ("AJI"), an interior design service. Should you decide to use the services of SPF, we will receive a referral fee from them of 25% of the aggregate of the fee paid to them by you for the arrangement of a mortgage and any fee received by them from the product provider. Should you decide to use the services of AJI, we will receive a referral fee of 10% of the net income received by AJI for the services they provide to you. 6. If there is anything of particular importance to you, please contact this office and Strutt & Parker will try to have the information checked for you. Strutt & Parker is a trading style of BNP Paribas Real Estate Advisory & Property Management UK Limited. Photographs taken April 2026. Particulars prepared April 2026.

Strutt & Parker

Land and property. Since 1885.