

WESTBOURNE
PARK ROAD

W2



A wide, semi-detached, five-bedroom family house comprising approximately 3,500 sq ft over just four floors

It has excellent entertaining space including open-plan kitchen, dining and reception areas and a further large family/games room.

This handsome period house is set back from the road behind a large front garden with covered off-street parking and there is a beautiful, private 46' rear garden.





Westbourne Park Road is an attractive address situated close to Westbourne Grove and therefore benefits from the shopping and transport facilities of the local area. The open spaces of Kensington Gardens are also nearby.

Accommodation

- Entrance hall
- Drawing room
- Kitchen/breakfast room
- Family room
- Study
- Five bedrooms
- Four bath/shower rooms
- Gym/Bedroom six
- Utility room
- Guest WC
- Off-street parking
- Garden



Terms

Council Tax
Band H

EPC
Rating D

Tenure
Freehold

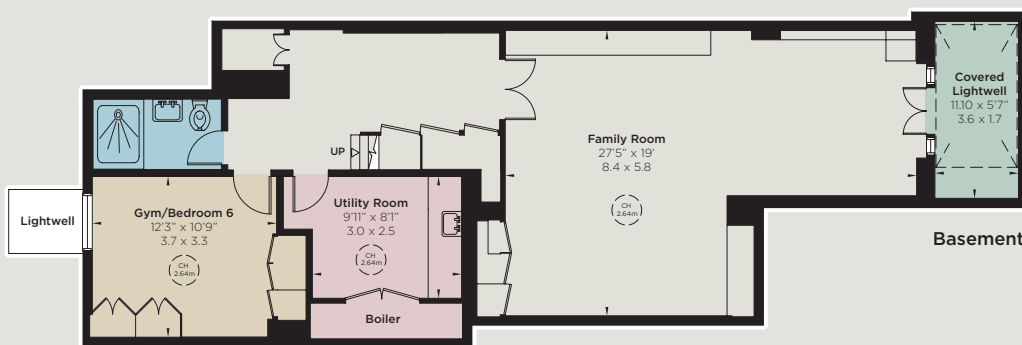
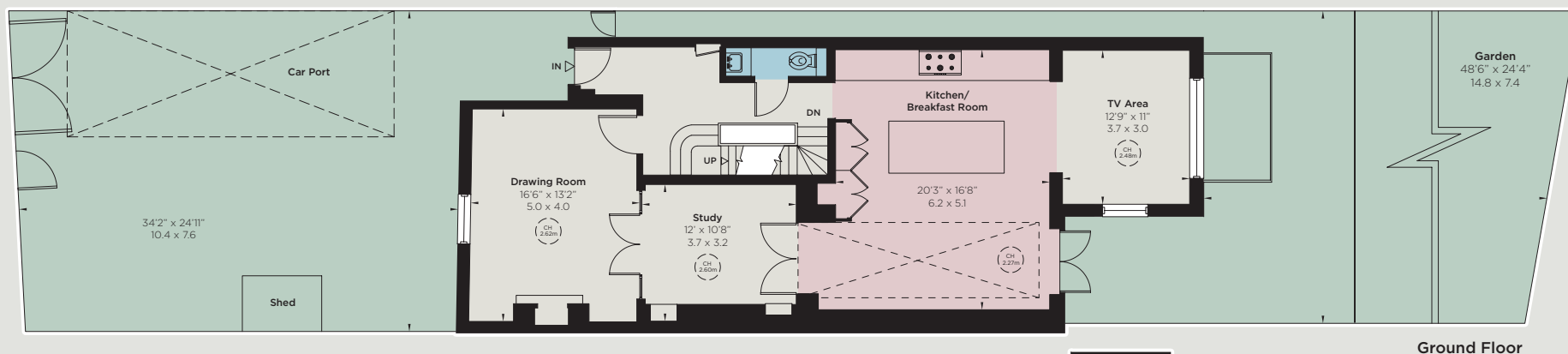
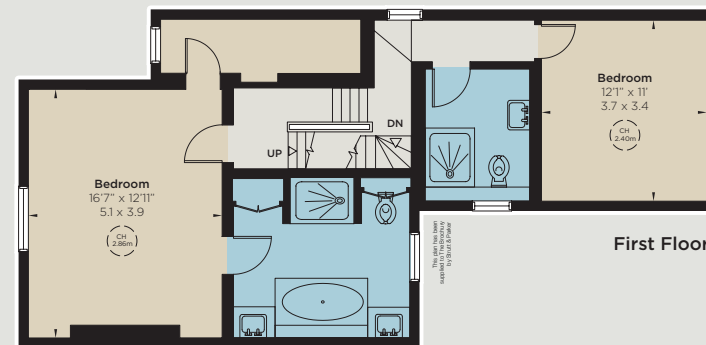
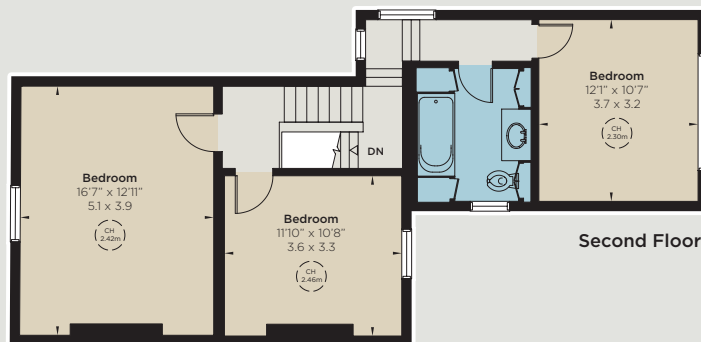
Local Authority
City of Westminster

Guide Price
£5,600,000



Approximate Gross Internal Area

3,479 sq ft
323 sq m



Notting Hill

303 Westbourne Grove, London W11 2QA

+44 (0)20 7221 1111

nottinghill@struttandparker.com
struttandparker.com

[f /struttandparker](https://www.facebook.com/struttandparker)

Over 50 offices across England and Scotland,
including Prime Central London

IMPORTANT NOTICE: Strutt & Parker gives notice that: 1. These particulars do not constitute an offer or contract or part thereof. 2. All descriptions, photographs and plans are for guidance only and should not be relied upon as statements or representations of fact. All measurements are approximate and not necessarily to scale. Any prospective purchaser must satisfy themselves of the correctness of the information within the particulars by inspection or otherwise. 3. Strutt & Parker does not have any authority to give any representations or warranties whatsoever in relation to this property (including but not limited to planning/building regulations), nor can it enter into any contract on behalf of the Vendor. 4. Strutt & Parker does not accept responsibility for any expenses incurred by prospective purchasers in inspecting properties which have been sold, let or withdrawn. 5. We are able to refer you to SPF Private Clients Limited ("SPF") for mortgage broking services, and to Alexander James Interiors ("AJI"), an interior design service. Should you decide to use the services of SPF, we will receive a referral fee from them of 25% of the aggregate of the fee paid to them by you for the arrangement of a mortgage and any fee received by them from the product provider. Should you decide to use the services of AJI, we will receive a referral fee of 10% of the net income received by AJI for the services they provide to you. 6. If there is anything of particular importance to you, please contact this office and Strutt & Parker will try to have the information checked for you. **Photographs taken March 2024. Particulars prepared March 2024.** Strutt & Parker is a trading style of BNP Paribas Real Estate Advisory & Property Management UK Limited. 03/05/24S&P-240308B-04-GG