

Cranborne Cottage, Westworth Farm
Edmondsham



Strutt
& Parker

Land and property. Since 1885.



A charming Grade II listed thatched period cottage offering a wealth of character features and beautifully presented accommodation, set within expansive gardens and a picturesque rural setting in the heart of Dorset.

Believed to date back to 1816, Cranborne Cottage is an enchanting semi-detached period home, showcasing traditional brick elevations beneath a striking thatched roof. Forming part of a farmyard redevelopment, the property blends historic charm, including exposed timber beams and fine brickwork, with sensitive modern updates to create a comfortable and stylish country residence.

Our clients have taken great care to improve and maintain the property and as such it is presented in immaculate condition.

The ground floor is centred around a welcoming hall and dining room, featuring exposed brickwork and timber framing. This leads through to a generous sitting room, which provides a cosy retreat with its substantial inglenook fireplace with wood-burning stove and a door opening to the garden.

To the opposite side, the contemporary handmade, oaklined kitchen and breakfast room is fitted with bespoke cabinetry and Bosch appliances, a large central island with breakfast bar, and a Rangemaster cooker set within a brick hearth. A practical utility room and cloakroom complete the ground floor accommodation.

On the first floor, the accommodation is equally well-appointed. There is a generous landing and the principal bedroom features a fireplace and a modern, stylishly fitted en suite shower room. A second double bedroom, with exposed beams and access to a spacious loft room above, is served by a well-proportioned family bathroom. A third double bedroom completes the floor..

The property is approached via a long gravel driveway leading to the house where there is ample parking and access to a detached double garage, which also benefits from utility/laundry facilities and storage areas, offering excellent versatility.

The picturesque gardens are a particular highlight, featuring a large level lawn, a brick-paved sun terrace ideal for al fresco dining, and a variety of mature trees, hedging and flowering borders. Beyond the formal gardens lies an orchard area and a communal meadow, all enjoying attractive views over the surrounding countryside.

1,516 sq ft (141 sq m) | Freehold
2 reception rooms | 3 bedrooms | 2 bathrooms
Double garage with floor above | Garden | Rural location

Guide price £925,000

Location

The property is located in a rural position, close to the Dorset village of Cranborne and the Cranborne Chase Area of Outstanding Natural Beauty, surrounded by beautiful rolling countryside. Verwood has a variety of everyday amenities, including several shops, supermarkets and two doctors' surgeries.

The larger towns of Ringwood, Fordingbridge, Bournemouth and the city of Salisbury are also easily accessible by road, providing a wealth of amenities and leisure facilities. Outstanding-rated schools in the area include Trinity Church of England First School, Verwood Church of England First School and Cranborne Church of England First School, along with independents including Forres Sandle Manor School.

By road, the A354 and the A338 provide access towards Salisbury and Bournemouth, while the A303, A31 and M27 are all easily accessible. Mainline rail services can be accessed in either Salisbury, Bournemouth or Christchurch, with airports at both Bournemouth and Southampton.

Postcode region: BH21

General

Local Authority: Dorset Council

Services: Mains electricity and water. Oil fired central heating. Private drainage which we understand is compliant with current regulations. Communal solar panels which supplement the communal lighting and sewage treatment plant

Council Tax: Band F

EPC Rating: E

Agents Note: Service charges for communal areas is £105 pcm
Mobile and Broadband checker: Information can be found here
<https://checker.ofcom.org.uk/en-gb/>

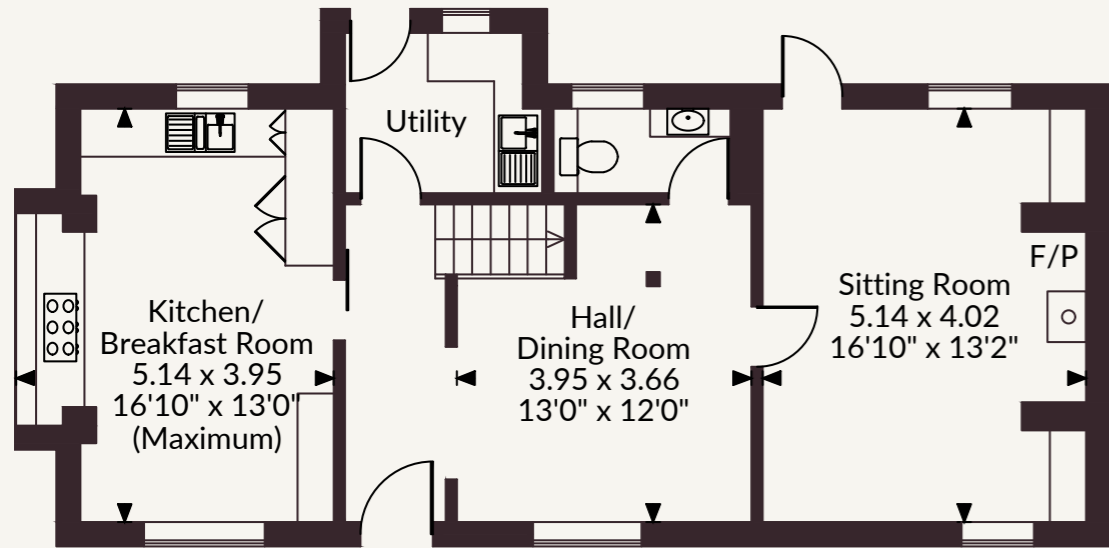
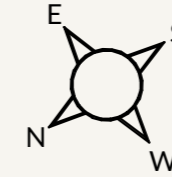


Cranborne Cottage, Westworth Farm, Edmondsham, Dorset

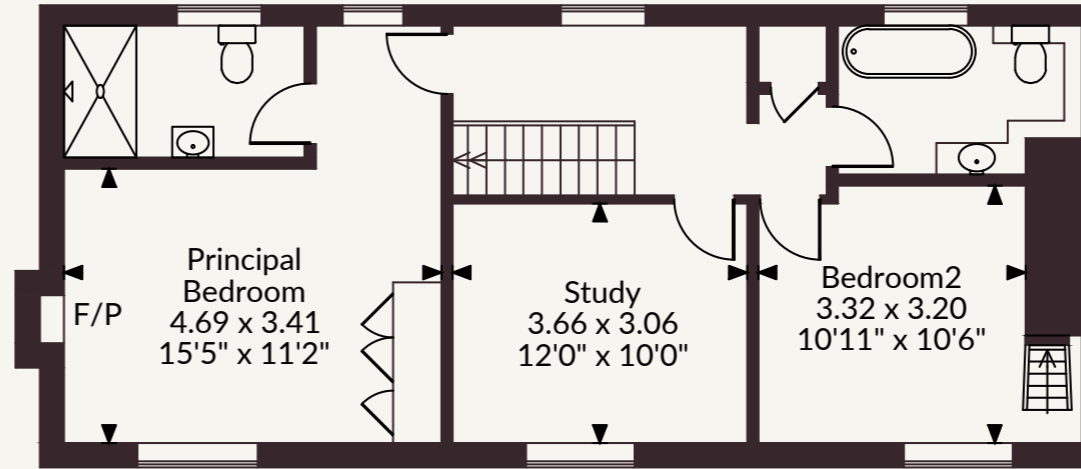
Main House internal area 1,516 sq ft (141 sq m)

Garage internal area 746 sq ft (69 sq m)

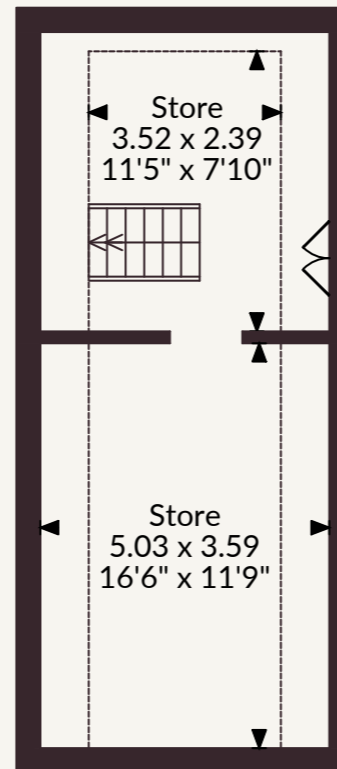
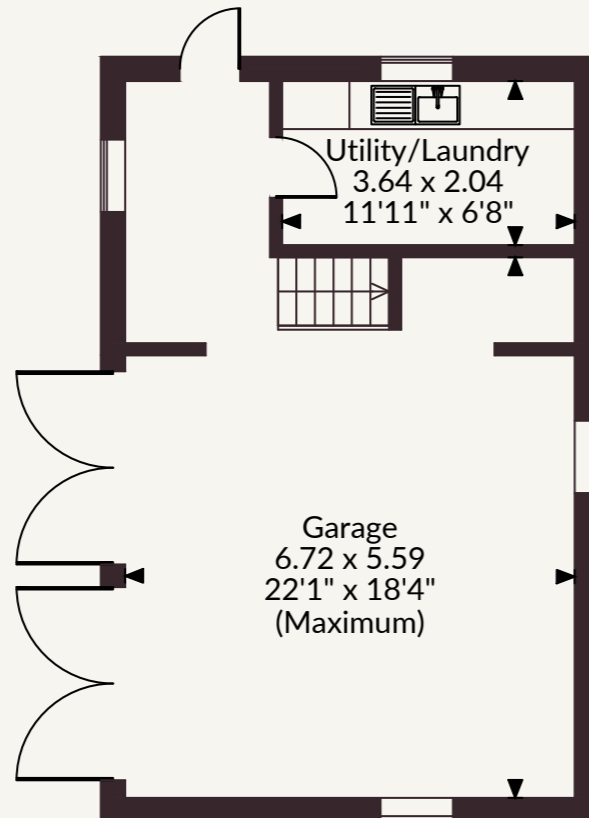
Total internal area 2,262 sq ft (210 sq m)



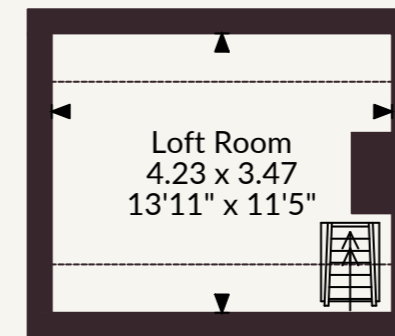
Ground Floor



First Floor



Floor Above Garage



Salisbury

41 Milford Street, Salisbury, Wiltshire SP1 2BP

01722 344010 | salisbury@struttandparker.com

FOR ILLUSTRATIVE PURPOSES ONLY - NOT TO SCALE

The position & size of doors, windows, appliances and other features are approximate only.

© ehouse. Unauthorised reproduction prohibited. Drawing ref. dig/8690519/JOV

@struttandparker struttandparker.com

IMPORTANT NOTICE: Strutt & Parker gives notice that: 1. These particulars do not constitute an offer or contract or part thereof. 2. All descriptions, photographs and plans are for guidance only and should not be relied upon as statements or representations of fact. All measurements are approximate and not necessarily to scale. Any prospective purchaser must satisfy themselves of the correctness of the information within the particulars by inspection or otherwise. 3. Strutt & Parker does not have any authority to give any representations or warranties whatsoever in relation to this property (including but not limited to planning/building regulations), nor can it enter into any contract on behalf of the Vendor. 4. Strutt & Parker does not accept responsibility for any expenses incurred by prospective purchasers in inspecting properties which have been sold, let or withdrawn. 5. We are able to refer you to SPF Private Clients Limited ("SPF") for mortgage broking services, and to Alexander James Interiors ("AJI"), an interior design service. Should you decide to use the services of SPF, we will receive a referral fee from them of 25% of the aggregate of the fee paid to them by you for the arrangement of a mortgage and any fee received by them from the product provider. Should you decide to use the services of AJI, we will receive a referral fee of 10% of the net income received by AJI for the services they provide to you. 6. If there is anything of particular importance to you, please contact this office and Strutt & Parker will try to have the information checked for you. Strutt & Parker is a trading style of BNP Paribas Real Estate Advisory & Property Management UK Limited. Photographs taken May 2026. Particulars prepared May 2026.



Strutt
& Parker

Land and property. Since 1885.