



Weymouth Mews, Marylebone, W1G

Weymouth Mews, Marylebone, W1G

A beautifully presented mews apartment in a peaceful yet exclusive Marylebone location

Reception/dining room | Kitchen | 2 Bedrooms
Bathroom | EPC rating C

This stylishly appointed two-bedroom apartment is located on the first floor and features rich, vibrant colours and décor throughout. The main reception room is well-proportioned and includes three sash windows welcoming plenty of natural light. There is space for both a seating and dining area. The galley kitchen offers fitted units and space for all the necessary appliances. There are two well-presented bedrooms, both of which are doubles, as well as a bathroom with an over-bath rainfall shower head. Weymouth Mews lies in a quiet Marylebone enclave within easy reach of Regent's Park, Bond Street and Oxford Circus. There are plenty of restaurants, cafés and independent stores nearby, while transport connections include the Bakerloo and Central Lines at Regent's Park and Oxford Circus.

Terms

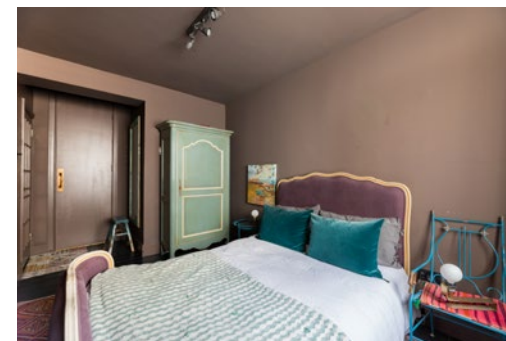
Guide Price: £1,300,000

Tenure: Share of Freehold

Local Authority: City of Westminster

Council Tax: Band G

Service Charge: £1,949.18 per quarter and includes a quarterly reserve (reviewed annually)







Mayfair

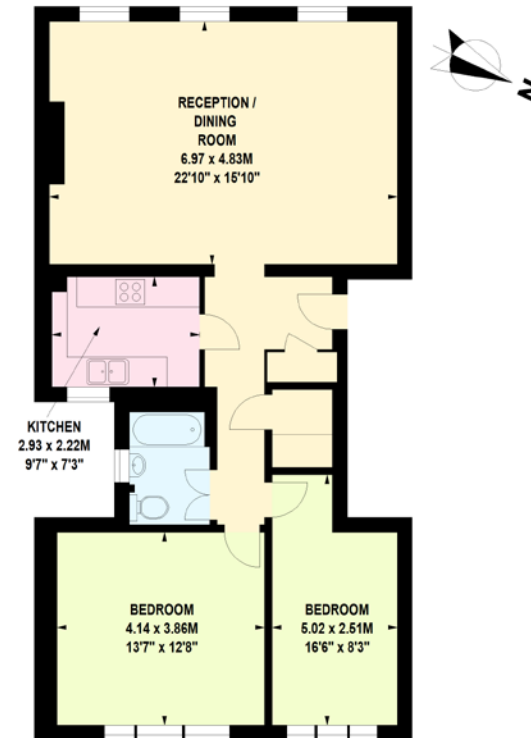
First Floor, 24 Savile Row, W1S 2ES

07468 357188

mayfair@struttandparker.com

Weymouth Mews, W1

Approximate Gross Internal Area 85 sq m / 916 sq ft



First Floor

Floor Plan produced for Druce - Notting Hill by Mays Floorplans © . Tel 020 3397 4594
Illustration for identification purposes only, not to scale
All measurements are maximum, and include wardrobes and window bays where applicable

IMPORTANT NOTICE: Strutt & Parker gives notice that: 1. These particulars do not constitute an offer or contract or part thereof. 2. All descriptions, photographs and plans are for guidance only and should not be relied upon as statements or representations of fact. All measurements are approximate and not necessarily to scale. Any prospective purchaser must satisfy themselves of the correctness of the information within the particulars by inspection or otherwise. 3. Strutt & Parker does not have any authority to give any representations or warranties whatsoever in relation to this property (including but not limited to planning/building regulations), nor can it enter into any contract on behalf of the Vendor. 4. Strutt & Parker does not accept responsibility for any expenses incurred by prospective purchasers in inspecting properties which have been sold, let or withdrawn. 5. We are able to refer you to SPF Private Clients Limited ("SPF") for mortgage broking services, and to Alexander James Interiors ("AJI"), an interior design service. Should you decide to use the services of SPF, we will receive a referral fee from them of 25% of the aggregate of the fee paid to them by you for the arrangement of a mortgage and any fee received by them from the product provider. Should you decide to use the services of AJI, we will receive a referral fee of 10% of the net income received by AJI for the services they provide to you. 6. If there is anything of particular importance to you, please contact this office and Strutt & Parker will try to have the information checked for you. Photographs taken August November 2023. Particulars prepared November 2023. Strutt & Parker is a trading style of BNP Paribas Real Estate Advisory & Property Management UK Limited.