



Wood Crescent, BBC Television Centre, W12

For the finer things in property.

**STRUTT
& PARKER**

BNP PARIBAS GROUP

Wood Crescent, BBC Television Centre, W12

A superb, lateral, two bedroom apartment on the 7th floor (with lift) of this iconic development.

This stylishly presented apartment has far-reaching views, excellent natural light and good proportions. The large kitchen/reception room has a separate utility room and leads onto a large west-facing balcony. The principal bedroom has a large en suite shower room and walk in wardrobe and there is a second bedroom with access to the balcony and a family bathroom.

The Television Centre is perfectly located close to White City, Wood Lane and Shepherds Bush underground stations and is further served by excellent over ground, bus and road routes into the West End and Canary Wharf.

Kitchen/reception room | Two bedrooms | Two bath/shower rooms | Utility room | Balcony | Air conditioning | 24-hour concierge | SOHO House Gym Membership | EPC rating B

Terms

Tenure: Leasehold, 975 years from 20.09.2017

Service Charge: £8,572 annually (£2,143 per quarter)

Ground Rent: £600 annually

Council Tax: Band F

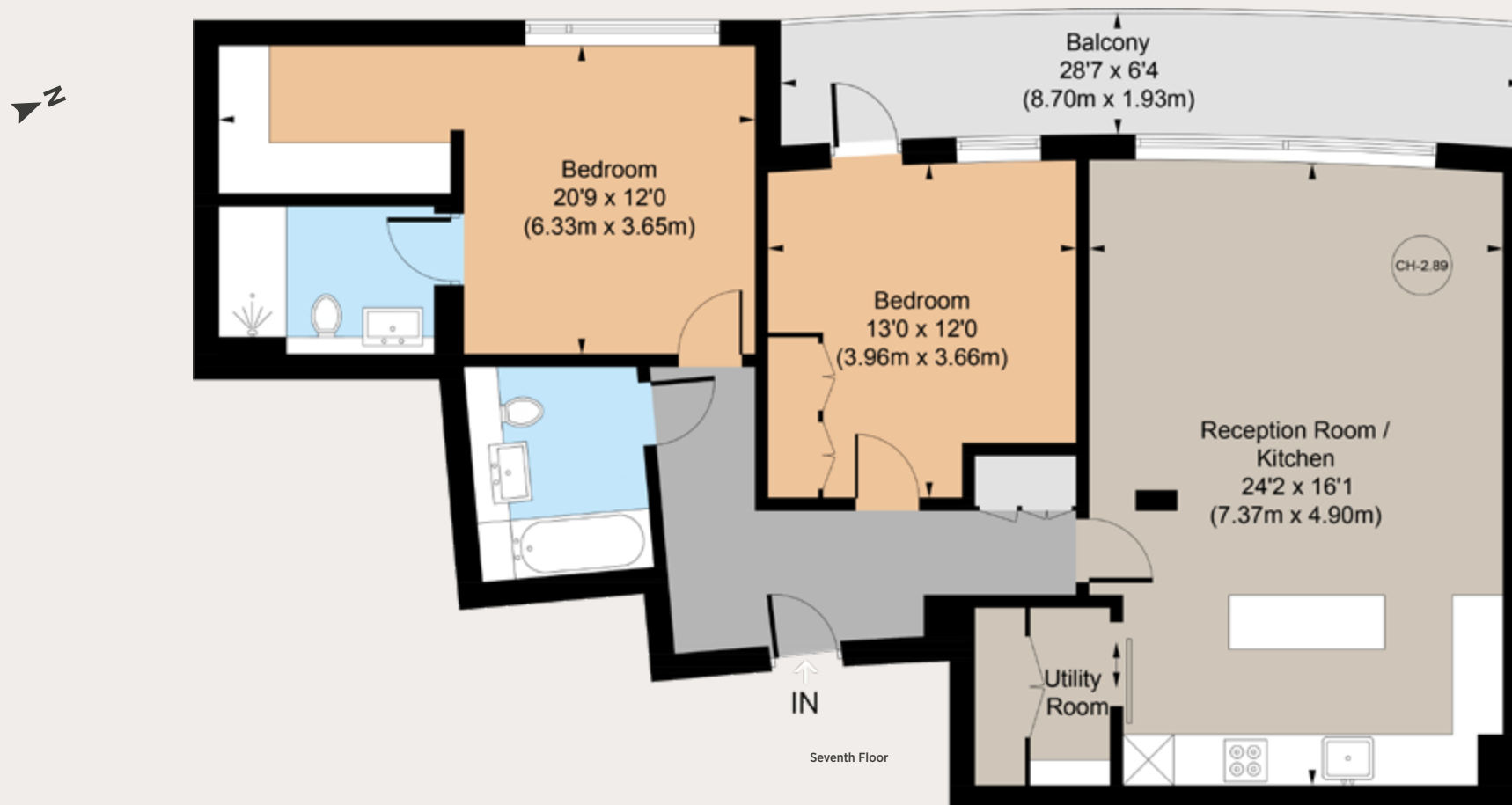
Local Authority: Hammersmith and Fulham

Asking Price: £1,200,000





Approximate gross internal area 1,007 sq ft (93.6 sq m)
For identification purposes only.



Notting Hill

303 Westbourne Grove, London, W11 2QA

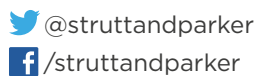
020 7221 1111

nottinghill@struttandparker.com

struttandparker.com

IMPORTANT NOTICE

Strutt & Parker gives notice that: 1. These particulars do not constitute an offer or contract or part thereof. 2. All descriptions, photographs and plans are for guidance only and should not be relied upon as statements or representations of fact. All measurements are approximate and not necessarily to scale. Any prospective purchaser must satisfy themselves of the correctness of the information within the particulars by inspection or otherwise. 3. Strutt & Parker does not have any authority to give any representations or warranties whatsoever in relation to this property (including but not limited to planning/building regulations), nor can it enter into any contract on behalf of the Vendor. 4. Strutt & Parker does not accept responsibility for any expenses incurred by prospective purchasers in inspecting properties which have been sold, let or withdrawn. 5. We are able to refer you to SPF Private Clients Limited ("SPF") for mortgage broking services, and to Alexander James Interiors ("AJI"), an interior design service. Should you decide to use the services of SPF, we will receive a referral fee from them of 25% of the aggregate of the fee paid to them by you for the arrangement of a mortgage and any fee received by them from the product provider. Should you decide to use the services of AJI, we will receive a referral fee of 10% of the net income received by AJI for the services they provide to you. 6. If there is anything of particular importance to you, please contact this office and Strutt & Parker will try to have the information checked for you. Photographs taken March 2024. Particulars prepared March 2024. Strutt & Parker is a trading style of BNP Paribas Real Estate Advisory & Property Management UK Limited.



Over 45 offices across England and Scotland,
including Prime Central London

For the finer things in property.

