



Wood Crescent, White City, W12

For the finer things in property.



Wood Crescent, White City, W12

A bright and stylish two-bedroom apartment with far-reaching, park views.

Located on the 4th floor of an iconic West London development, this beautifully presented flat benefits from great natural light and good proportions. There is a separate kitchen and the reception room leads onto a large, south-west facing balcony. The principal bedroom has a large walk in wardrobe and en suite shower room and, there is a second bedroom and a family bathroom.

The Television Centre is perfectly located close to White City, Wood Lane and Shepherds Bush underground stations and is further served by excellent over ground, bus and road routes into the West End and Canary Wharf.

Kitchen | Reception room | Two bedrooms
Two bath/shower rooms | Balcony | Lift
Air conditioning | 24-hour concierge | SOHO House Gym Membership | EPC rating B

Terms

Tenure: Leasehold, 975 years from 20.09.2017

Service Charge: Approximately £6,000 pa

Ground Rent: Approximately £1,700 pa

Council Tax: Band F

Local Authority: Hammersmith and Fulham

Asking Price: £1,100,000

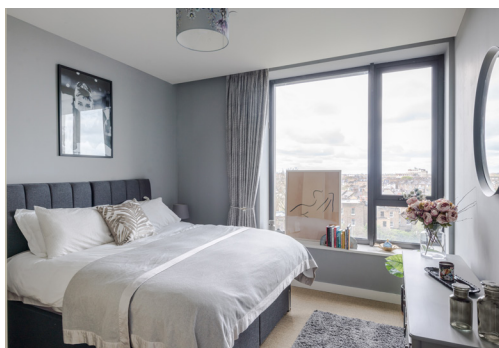
Notting Hill

303 Westbourne Grove, London, W11 2QA

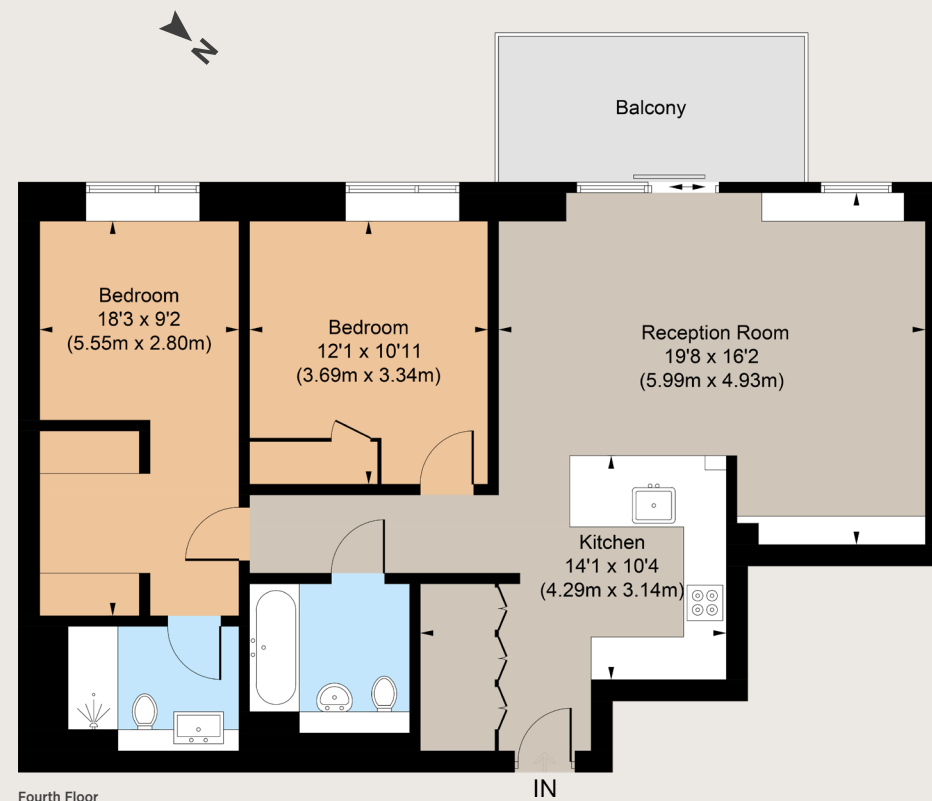
020 7221 1111

nottinghill@struttandparker.com

struttandparker.com



Gross Internal Area 914 sq ft (84.9 sq m)
For identification purposes only.



IMPORTANT NOTICE

Strutt & Parker gives notice that: 1. These particulars do not constitute an offer or contract or part thereof. 2. All descriptions, photographs and plans are for guidance only and should not be relied upon as statements or representations of fact. All measurements are approximate and not necessarily to scale. Any prospective purchaser must satisfy themselves of the correctness of the information within the particulars by inspection or otherwise. 3. Strutt & Parker does not have any authority to give any representations or warranties whatsoever in relation to this property (including but not limited to planning/building regulations), nor can it enter into any contract on behalf of the Vendor. 4. Strutt & Parker does not accept responsibility for any expenses incurred by prospective purchasers in inspecting properties which have been sold, let or withdrawn. 5. We are able to refer you to SPF Private Clients Limited ("SPF") for mortgage broking services, and to Alexander James Interiors ("AJI"), an interior design service. Should you decide to use the services of SPF, we will receive a referral fee from them of 25% of the aggregate of the fee paid to them by you for the arrangement of a mortgage and any fee received by them from the product provider. Should you decide to use the services of AJI, we will receive a referral fee of 10% of the net income received by AJI for the services they provide to you. 6. If there is anything of particular importance to you, please contact this office and Strutt & Parker will try to have the information checked for you. Photographs taken April 2024. Particulars prepared April 2024. Strutt & Parker is a trading style of BNP Paribas Real Estate Advisory & Property Management UK Limited.



Over 45 offices across England and Scotland,
including Prime Central London

For the finer things in property.

