



Woodsford Square, Holland Park, W14

For the finer things in property.

**STRUTT  
& PARKER**

BNP PARIBAS GROUP 



## Woodsford Square, Holland Park, W14

A very well arranged five bedroom house, occupying approximately 2,266 sq ft, over four floors with the advantage of a garage, off-street parking, a garden and access to the communal gardens.

Woodsford Square is a development of town houses set around their own private communal gardens, ideally located off the exclusive Addison Road and benefiting from the excellent transport and shopping facilities of both Holland Park Avenue and Kensington High Street.

Entrance hall | Reception room | Kitchen/ breakfast room | Sitting room | Principal bedroom with en suite bathroom | Four further bedrooms | Further bathroom | Cloakroom | Utility room | Off-street parking | Garage | Use of communal gardens | Garden | EPC rating D

### Terms

**Tenure:** Freehold

**Service Charge:** For the period 29/09/23 to 24/03/24 approximately £1,504

**Council Tax:** Band H

**Local Authority:** The Royal Borough of Kensington and Chelsea

**Asking Price:** £3,200,000

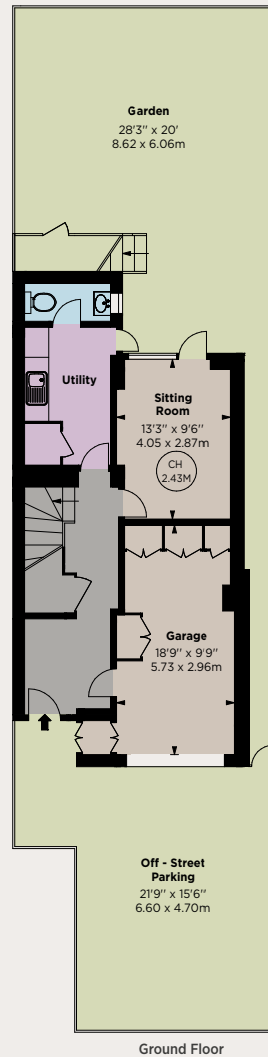




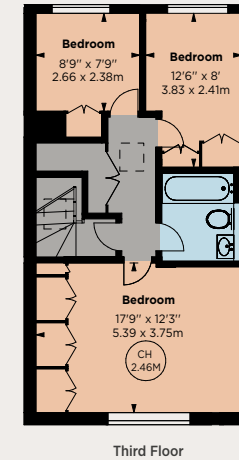
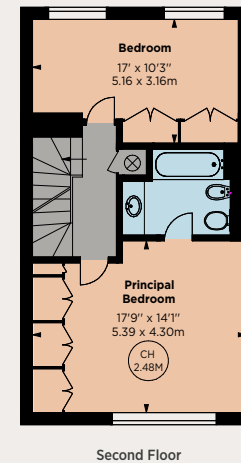
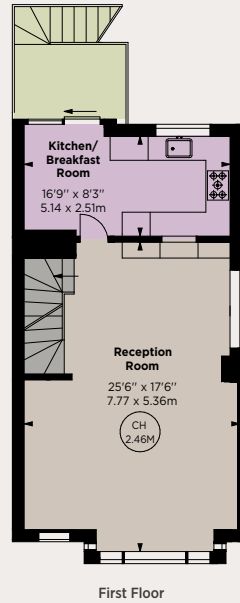




Approx. Gross Internal Area 2,266 sq ft (210.53 sq m)



Key :  
CH - Ceiling Height



## Kensington

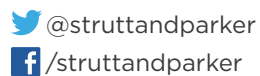
103 Kensington Church Street, London W8 7LN

**020 7938 3666**

kensington@struttandparker.com

### IMPORTANT NOTICE

Strutt & Parker gives notice that: 1. These particulars do not constitute an offer or contract or part thereof. 2. All descriptions, photographs and plans are for guidance only and should not be relied upon as statements or representations of fact. All measurements are approximate and not necessarily to scale. Any prospective purchaser must satisfy themselves of the correctness of the information within the particulars by inspection or otherwise. 3. Strutt & Parker does not have any authority to give any representations or warranties whatsoever in relation to this property (including but not limited to planning/building regulations), nor can it enter into any contract on behalf of the Vendor. 4. Strutt & Parker does not accept responsibility for any expenses incurred by prospective purchasers in inspecting properties which have been sold, let or withdrawn. 5. We are able to refer you to SPF Private Clients Limited ("SPF") for mortgage broking services, and to Alexander James Interiors ("AJI"), an interior design service. Should you decide to use the services of SPF, we will receive a referral fee from them of 25% of the aggregate of the fee paid to them by you for the arrangement of a mortgage and any fee received by them from the product provider. Should you decide to use the services of AJI, we will receive a referral fee of 10% of the net income received by AJI for the services they provide to you. 6. If there is anything of particular importance to you, please contact this office and Strutt & Parker will try to have the information checked for you. Photographs taken October 2023. Particulars prepared November 2023. Strutt & Parker is a trading style of BNP Paribas Real Estate Advisory & Property Management UK Limited.



Over 45 offices across England and Scotland,  
including Prime Central London

**For the finer things in property.**

