

# The New House, Worthen Shropshire



Strutt  
& Parker

Land and property. Since 1885.

An idyllic period house with handsome original details and enchanting country gardens, in a picturesque Shropshire village setting with easy access to Shrewsbury and the Welsh borders

New House is a charming period property with six bedrooms and splendid character features, set within delightful gardens in the Shropshire village of Worthen. The house features attractive red brick elevations, while inside there are exposed timber beams and handsome original fireplaces, alongside understated décor.

The ground floor features a welcoming reception hall with brick flooring and an impressive inglenook fireplace fitted with a woodburning stove. There is a charming dual aspect sitting room with brick-built fireplace, while a further social living space is found in the open-plan kitchen and dining room at the rear. The kitchen features farmhouse-style units under wooden worktops, an Aga and range of integrated appliances including a dishwasher, fridge and Quooker tap, while the dining area has space for a family table. The utility room offers further storage with fitted units and under-counter space for laundry appliances.

Upstairs are six well-presented bedrooms, five being doubles, with the sixth ideal for use as a study, dressing room or nursery. The principal and second bedrooms benefits from built-in cupboards, while one bedroom has its own washbasin. To the first floor is family bathroom with underfloor heating, bathtub and separate shower unit, as well as to an additional shower room.

Outside the enchanting part walled gardens are laid to pathways and terracing through pristine lawns, past colourful beds with filled with flowering perennials. Within the grounds are an ornamental pond, orchard, greenhouse, cold frame, vegetable patch and garden store. Parking is available on the gravel driveway at the front along with an integrated garage and storage. Standing in approximately 0.44 acres.



**Location**

Newhouse occupies a superb, elevated position in the charming village of Worthen, surrounded by beautiful Shropshire countryside. The village has a parish church and a local shop, while nearby Minsterley and Pontesbury offer easy access to further everyday amenities. The county town of Shrewsbury is 12 miles away, and provides a further range of comprehensive shopping and recreational activities.

There are a number of highly regarded schools in the area, in both the state and private sectors, to include Shrewsbury School, Shrewsbury Sixth Form College and Presfelde.

Transport connections include the A5, providing good road links to the North and South, while the M54 provides links to Birmingham and Midland business centres. A rail service is available in Shrewsbury and airports are available at Liverpool, Manchester and Birmingham.

**Directions**

Postcode region: SY5

**General**

Local Authority: Shropshire

Services: Oil fired central heating. Mains electricity, water and private drainage that we understand complies with current regulations.

Council Tax: Band G

EPC Rating: TBC (commissioned)

Fixtures and Fittings: Only those items known as fixtures and fittings will be included in the sale. Certain items may be available by separate negotiation.

Wayleaves and easements: The property is sold subject to any wayleaves or easements, whether mentioned in these particulars or not.

Mobile and Broadband checker: Information can be found here <https://checker.ofcom.org.uk/en-gb/>

2,618 sq ft (243 sq m)

2 Reception rooms

6 Bedrooms

2 Bathrooms

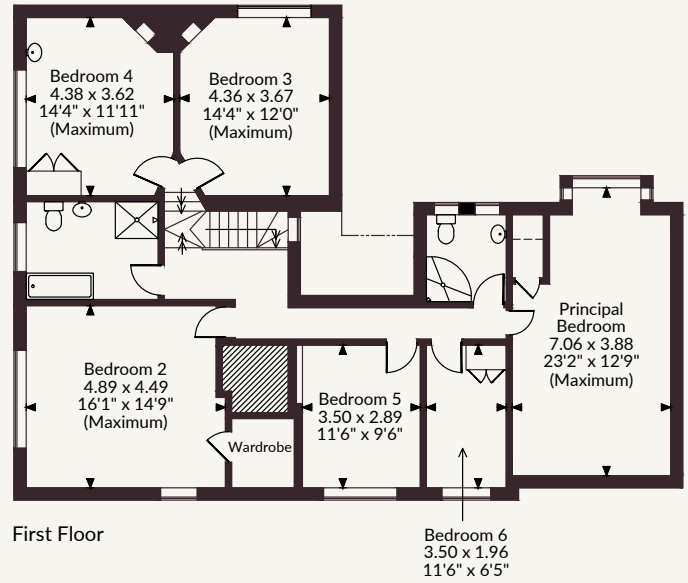
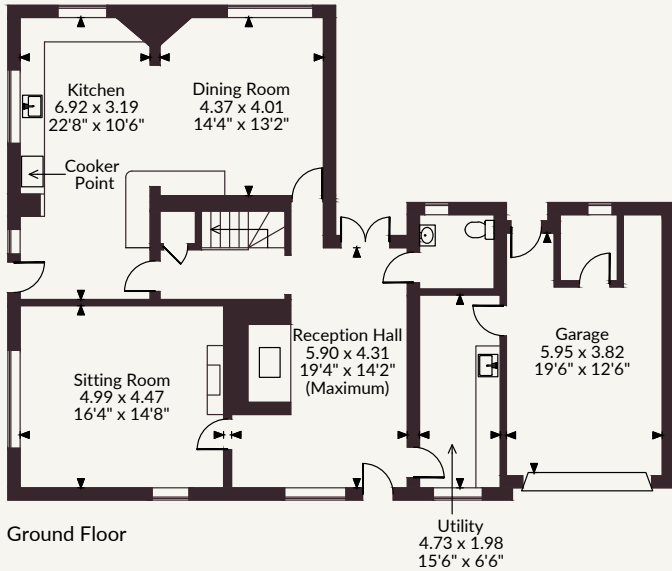
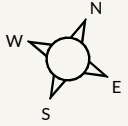
Garage

Freehold

Village Location

Guide price £795,000

New House, Worthen, Shrewsbury  
 Main House internal area 2,618 sq ft (243 sq m)  
 Garage internal area 257 sq ft (24 sq m)  
 Total internal area 2,875 sq ft (267 sq m)



FOR ILLUSTRATIVE PURPOSES ONLY - NOT TO SCALE  
 The position & size of doors, windows, appliances and other features are approximate only.  
 □ □ □ □ Denotes restricted head height  
 © ehous. Unauthorised reproduction prohibited. Drawing ref. dig/8683792/SGE

## Shropshire & Mid Wales

Theatre Royal, 14 Shoplatch, Shrewsbury, SY1 1HR  
 01743 284200 shropshire@struttandparker.com



@struttandparker struttandparker.com

**Strutt & Parker**

Land and property. Since 1885.

IMPORTANT NOTICE: Strutt & Parker gives notice that: 1. These particulars do not constitute an offer or contract or part thereof. 2. All descriptions, photographs and plans are for guidance only and should not be relied upon as statements or representations of fact. All measurements are approximate and not necessarily to scale. Any prospective purchaser must satisfy themselves of the correctness of the information within the particulars by inspection or otherwise. 3. Strutt & Parker does not have any authority to give any representations or warranties whatsoever in relation to this property (including but not limited to planning/building regulations), nor can it enter into any contract on behalf of the Vendor. 4. Strutt & Parker does not accept responsibility for any expenses incurred by prospective purchasers in inspecting properties which have been sold, let or withdrawn. 5. We are able to refer you to SPF Private Clients Limited ("SPF") for mortgage broking services, and to Alexander James Interiors ("AJI"), an interior design service. Should you decide to use the services of SPF, we will receive a referral fee from them of 25% of the aggregate of the fee paid to them by you for the arrangement of a mortgage and any fee received by them from the product provider. Should you decide to use the services of AJI, we will receive a referral fee of 10% of the net income received by AJI for the services they provide to you. 6. If there is anything of particular importance to you, please contact this office and Strutt & Parker will try to have the information checked for you. Strutt & Parker is a trading style of BNP Paribas Real Estate Advisory & Property Management UK Limited. Photographs taken April 2026. Particulars prepared April 2026