



Colville Gardens, Notting Hill, W2

For the finer things in property.

**STRUTT
& PARKER**

BNP PARIBAS GROUP

Colville Gardens, Notting Hill, W2

A stylish one bedroom flat in a portered building with lift.

A bright fourth floor flat, set within a well renowned portered building in the heart of Notting Hill. The flat enjoys fantastic views over the private communal gardens below, a beautiful bay window in the reception room and a fully fitted, semi open-plan kitchen.

Pinehurst Court is a gated development, located on Colville Gardens, a tree lined cul-de-sac in central Notting Hill. A wealth of highly fashionable amenities can be found on Westbourne Grove and Portobello Road. Notting Hill underground station is also within easy reach.

Entrance hall | Reception room | Kitchen
Bedroom | Shower room | Porter | Lift
Communal garden | Bike storage | EPC rating D

Terms

Tenure: Leasehold. 150 years from 25/12/1972 (99 years remaining)

Service Charge: £2,934 pa

Ground Rent: £95pa

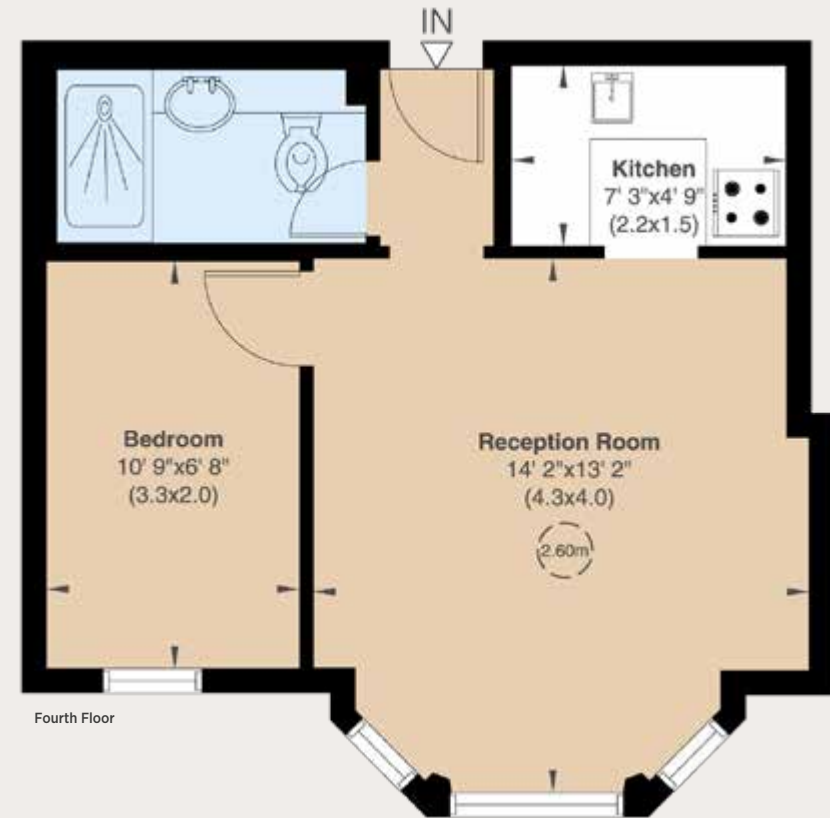
Council Tax: Band C

Local Authority: The Royal Borough of Kensington and Chelsea

Asking Price: £525,000



Gross Internal Area 341 sq ft (32 sq m)
For identification purposes only.



303 Westbourne Grove, London, W11 2QA

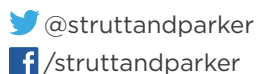
020 7221 1111

nottinghill@struttandparker.com

struttandparker.com

IMPORTANT NOTICE

Strutt & Parker gives notice that: 1. These particulars do not constitute an offer or contract or part thereof. 2. All descriptions, photographs and plans are for guidance only and should not be relied upon as statements or representations of fact. All measurements are approximate and not necessarily to scale. Any prospective purchaser must satisfy themselves of the correctness of the information within the particulars by inspection or otherwise. 3. Strutt & Parker does not have any authority to give any representations or warranties whatsoever in relation to this property (including but not limited to planning/building regulations), nor can it enter into any contract on behalf of the Vendor. 4. Strutt & Parker does not accept responsibility for any expenses incurred by prospective purchasers in inspecting properties which have been sold, let or withdrawn. 5. We are able to refer you to SPF Private Clients Limited ("SPF") for mortgage broking services, and to Alexander James Interiors ("AJI"), an interior design service. Should you decide to use the services of SPF, we will receive a referral fee from them of 25% of the aggregate of the fee paid to them by you for the arrangement of a mortgage and any fee received by them from the product provider. Should you decide to use the services of AJI, we will receive a referral fee of 10% of the net income received by AJI for the services they provide to you. 6. If there is anything of particular importance to you, please contact this office and Strutt & Parker will try to have the information checked for you. Photographs taken June 2023. Particulars prepared June 2023. Strutt & Parker is a trading style of BNP Paribas Real Estate Advisory & Property Management UK Limited.



Over 45 offices across England and Scotland,
including Prime Central London

For the finer things in property.

