



Blenheim Crescent, Notting Hill, W11

For the finer things in property.

**STRUTT
& PARKER**

BNP PARIBAS GROUP

Blenheim Crescent, Notting Hill, W11

An outstanding studio flat with access to communal gardens.

This beautifully designed and spacious flat is on the raised ground floor of a handsome period building and benefits from a grand reception room with over 4m high ceilings and access to beautiful communal gardens.

Blenheim Crescent is a popular, tree lined address running in parallel to Elgin Crescent, between Clarendon Road and Ladbroke Grove. It is therefore in close proximity to all the shopping and transport facilities of Westbourne Grove, Portobello Road and Holland Park Avenue.

Kitchen | Reception room | Mezzanine bedroom
Bathroom | Communal garden access
EPC rating D

Terms

Tenure: 999 years from 29.09.2010, plus a

Share of Freehold

Service Charge: Currently approximately £380/annum (buildings insurance) excluding ad hoc maintenance costs

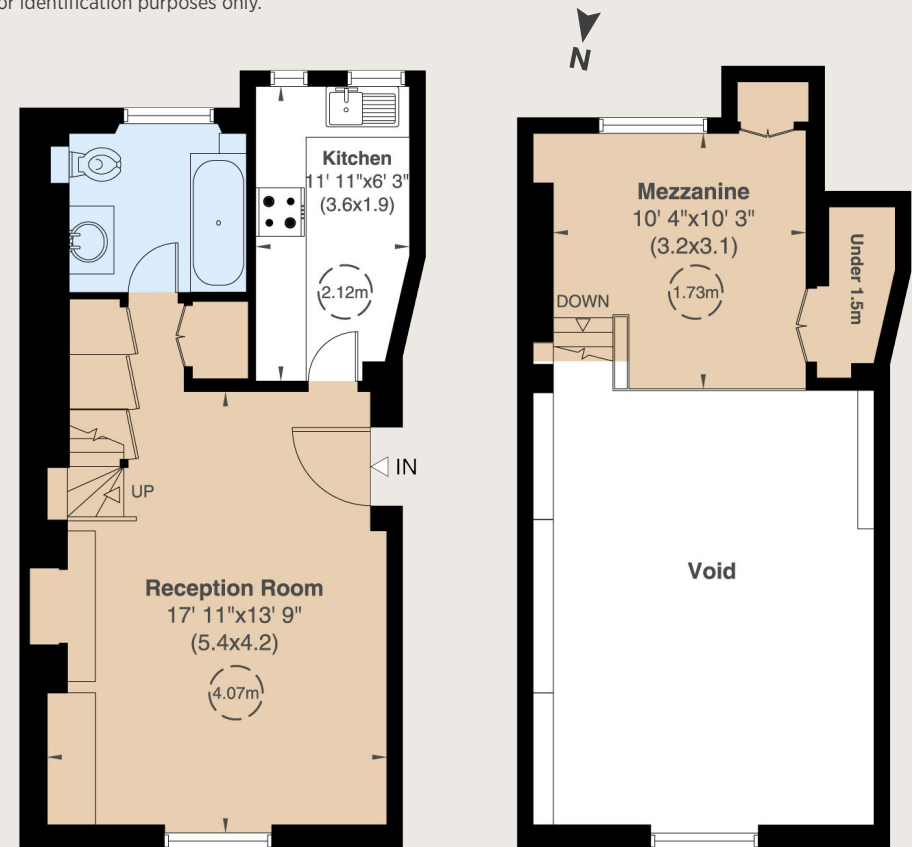
Council Tax: Band D

Local Authority: The Royal Borough of Kensington and Chelsea

Asking Price: £675,000



Gross Internal Area 536 sq ft (50 sq m) including under 1.5m
514 sq ft (48 sq m) excluding under 1.5m
For identification purposes only.



Upper Ground Floor

303 Westbourne Grove, London, W11 2QA

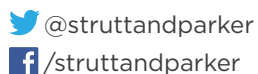
020 7221 1111

nottinghill@struttandparker.com

struttandparker.com

IMPORTANT NOTICE

Strutt & Parker gives notice that: 1. These particulars do not constitute an offer or contract or part thereof. 2. All descriptions, photographs and plans are for guidance only and should not be relied upon as statements or representations of fact. All measurements are approximate and not necessarily to scale. Any prospective purchaser must satisfy themselves of the correctness of the information within the particulars by inspection or otherwise. 3. Strutt & Parker does not have any authority to give any representations or warranties whatsoever in relation to this property (including but not limited to planning/building regulations), nor can it enter into any contract on behalf of the Vendor. 4. Strutt & Parker does not accept responsibility for any expenses incurred by prospective purchasers in inspecting properties which have been sold, let or withdrawn. 5. We are able to refer you to SPF Private Clients Limited ("SPF") for mortgage broking services, and to Alexander James Interiors ("AJI"), an interior design service. Should you decide to use the services of SPF, we will receive a referral fee from them of 25% of the aggregate of the fee paid to them by you for the arrangement of a mortgage and any fee received by them from the product provider. Should you decide to use the services of AJI, we will receive a referral fee of 10% of the net income received by AJI for the services they provide to you. 6. If there is anything of particular importance to you, please contact this office and Strutt & Parker will try to have the information checked for you. Photographs taken March 2023. Particulars prepared March 2023. Strutt & Parker is a trading style of BNP Paribas Real Estate Advisory & Property Management UK Limited.



Over 45 offices across England and Scotland,
including Prime Central London

For the finer things in property.

