



22 Edith Grove, Chelsea SW10



A charming semi-detached family house with self-contained flat

Just shy of 3,000 sq ft, this wonderful home is coming to the market for the first time in 70 years of the same ownership and is looking for someone to come in and refurbish back to its former glory.

The property retains a huge wealth of original features with high ceilings throughout, original parquet flooring, fireplaces and shutters.

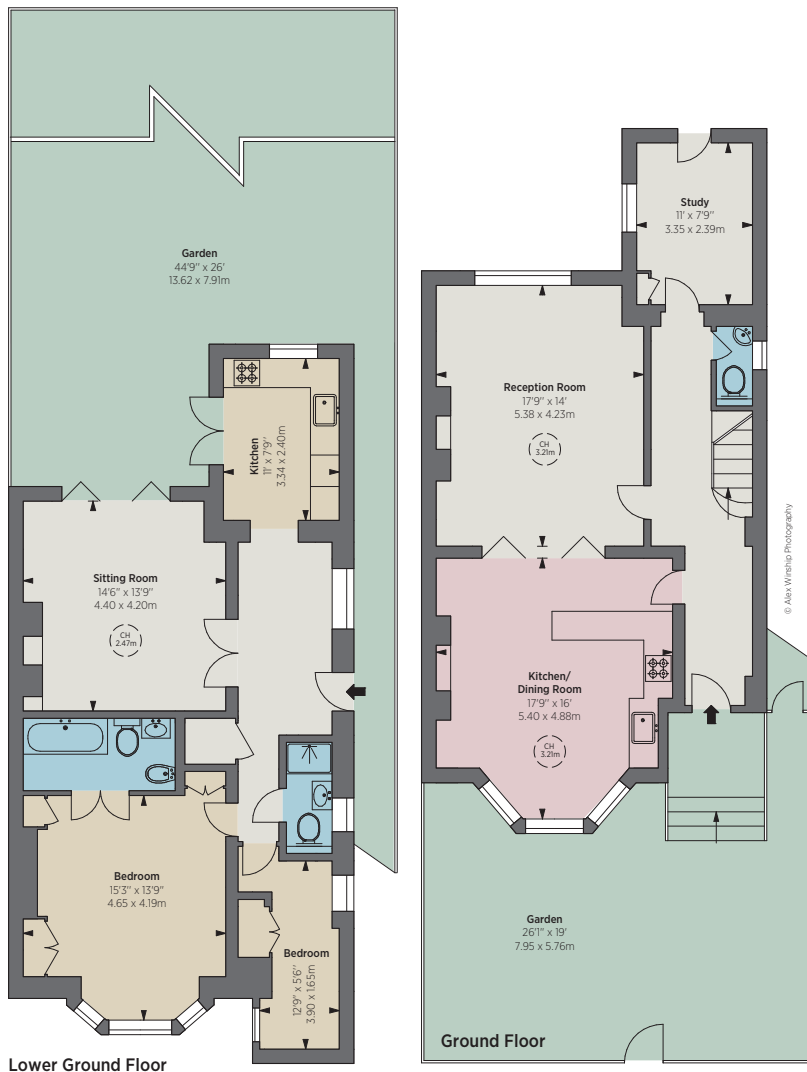
Opportunities like this are a rarity in the Royal Borough and is one not to be missed. The house comes with huge potential to extend from the ground and first floor, and half landing pod to the rear (STPP), and even has the benefit of a self-contained flat.

At the rear of the house there is a beautiful lawned south west-facing garden which has been well maintained throughout the years.

Location

Edith Grove is conveniently positioned between the fashionable Kings Road and Fulham Road with its plethora of shops, cafés and restaurants all located nearby. Earls Court Underground station is situated nearby.

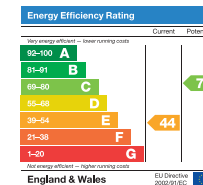




© Alex Winch Photography



Floorplan for guidance only, not to scale or valuations purposes. It must not be relied upon as a statement of fact. All measurements and areas are approximate and have been prepared in accordance with the current edition of the RICS Code of Measuring Practice.



Terms

Tenure: Freehold

Local Authority: The Royal Borough of Kensington & Chelsea

Council Tax: Band G

Guide Price: £2,850,000

Approximate Upper Flat Area

2,129 sq ft / 197.78 sq m

Approximate Garden Flat Area

800 sq ft / 74.32 sq m

Approximate Total Area

2,929 sq ft / 272.10 sq m

Chelsea SW10

140 Fulham Road, London SW10 9PY

+44 (0)20 7235 9959

chelseasw10@struttandparker.com
struttandparker.com

[f /struttandparker](https://www.facebook.com/struttandparker)

Over 50 offices across England and Scotland, including Prime Central London

IMPORTANT NOTICE: Strutt & Parker gives notice that: 1. These particulars do not constitute an offer or contract or part thereof. 2. All descriptions, photographs and plans are for guidance only and should not be relied upon as statements or representations of fact. All measurements are approximate and not necessarily to scale. Any prospective purchaser must satisfy themselves of the correctness of the information within the particulars by inspection or otherwise. 3. Strutt & Parker does not have any authority to give any representations or warranties whatsoever in relation to this property (including but not limited to planning/building regulations), nor can it enter into any contract on behalf of the Vendor. 4. Strutt & Parker does not accept responsibility for any expenses incurred by prospective purchasers in inspecting properties which have been sold, let or withdrawn. 5. We are able to refer you to SPF Private Clients Limited ("SPF") for mortgage broking services, and to Alexander James Interiors ("AJI"), an interior design service. Should you decide to use the services of SPF, we will receive a referral fee from them of 25% of the aggregate of the fee paid to them by you for the arrangement of a mortgage and any fee received by them from the product provider. Should you decide to use the services of AJI, we will receive a referral fee of 10% of the net income received by AJI for the services they provide to you. 6. If there is anything of particular importance to you, please contact this office and Strutt & Parker will try to have the information checked for you. **Photographs taken October 2023. Particulars prepared October 2023.** Strutt & Parker is a trading style of BNP Paribas Real Estate Advisory & Property Management UK Limited. 25/04/24S&P-220622D-12GG