



Oxberry Avenue, Fulham, SW6

For the finer things in property.

**STRUTT  
& PARKER**

BNP PARIBAS GROUP 



## Oxberry Avenue, Fulham, SW6

A very spacious split level flat located on tree lined Oxberry Avenue complete with a beautiful south west facing garden.

Two bedrooms | One bathroom | Flat  
Basement, ground floor | EPC Rating D

On the ground floor there are two double bedrooms served by a family bathroom. The lower ground floor comprises a good sized open-plan kitchen/reception room with separate entertaining space, and double doors leading out to a charming garden.

Oxberry Avenue is located within the popular 'Munster Village' with Fulham Road within close proximity. A short distance to Putney Bridge Underground station. There are regular buses from Fulham Palace Road, Fulham Road and New King's Road towards Putney, Kensington, Chelsea, West End and towards the hub of Hammersmith.

### Terms

**Tenure:** Share of freehold

**Service Charge:** Ad hoc

**Council Tax:** Band E

**Local Authority:** The London Borough of Hammersmith and Fulham

**Asking Price:** £875,000

## Fulham

701 Fulham Road, London SW6 5UL

**020 7731 7100**

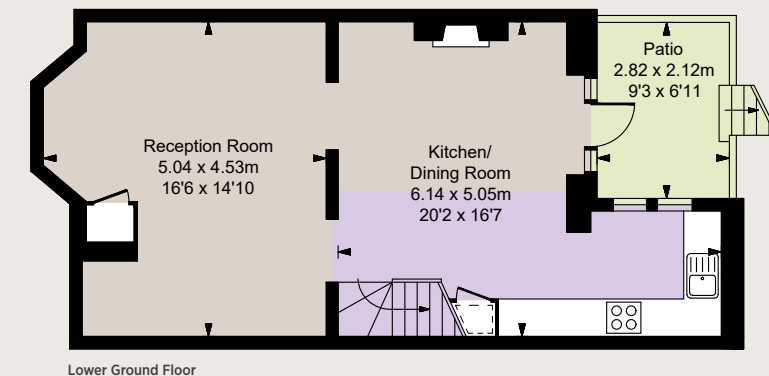
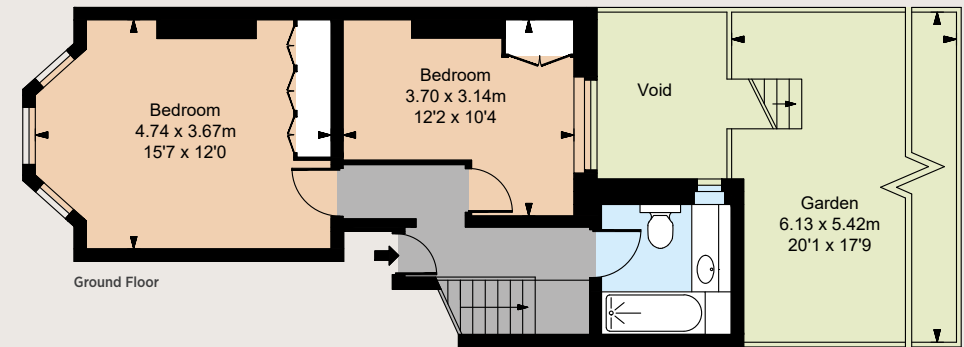
fulham@struttandparker.com



### IMPORTANT NOTICE

Strutt & Parker gives notice that: 1. These particulars do not constitute an offer or contract or part thereof. 2. All descriptions, photographs and plans are for guidance only and should not be relied upon as statements or representations of fact. All measurements are approximate and not necessarily to scale. Any prospective purchaser must satisfy themselves of the correctness of the information within the particulars by inspection or otherwise. 3. Strutt & Parker does not have any authority to give any representations or warranties whatsoever in relation to this property (including but not limited to planning/building regulations), nor can it enter into any contract on behalf of the Vendor. 4. Strutt & Parker does not accept responsibility for any expenses incurred by prospective purchasers in inspecting properties which have been sold, let or withdrawn. 5. We are able to refer you to SPF Private Clients Limited ("SPF") for mortgage broking services, and to Alexander James Interiors ("AJI"), an interior design service. Should you decide to use the services of SPF, we will receive a referral fee from them of 25% of the aggregate of the fee paid to them by you for the arrangement of a mortgage and any fee received by them from the product provider. Should you decide to use the services of AJI, we will receive a referral fee of 10% of the net income received by AJI for the services they provide to you. 6. If there is anything of particular importance to you, please contact this office and Strutt & Parker will try to have the information checked for you. Photographs taken April 2024. Particulars prepared April 2024. Strutt & Parker is a trading style of BNP Paribas Real Estate Advisory & Property Management UK Limited.

Gross Internal Area 900 sq ft (83.61 sq m) including restricted height under 1.5m  
For identification purposes only.



Over 45 offices across England and Scotland,  
including Prime Central London

For the finer things in property.

**STRUTT  
& PARKER**

BNP PARIBAS GROUP