

Pembroke Walk,  
Kensington



Strutt  
& Parker

Land and property. Since 1885.

A beautiful, architecturally-designed three bedroom house on Pembroke Walk occupying 2,895 sqft, with a magnificent studio room with extraordinary volume, proportions and light. In addition, the house has charming private gardens, front and back, as well as off street parking.

The house features a spacious entrance hall, elegant open kitchen and three bedrooms, all with refined bathrooms, the principal suite being very impressive.



#### Location

Pembroke Walk is a quiet street located just south of Edwardes Square, a short distance from Holland Park and Kensington Gardens. The shopping and transport facilities of Kensington High Street are close by.

Postcode region: W8

#### General

Local Authority: Royal Borough of Kensington and Chelsea

Council Tax: Band G

EPC Rating: D

Parking: Off street plus the usual resident parking available

Mobile coverage and broadband: Information can be found here: <https://checker.ofcom.org.uk/en-gb/mobile-coverage>

2,895 sq ft (269.04 sq m)  
Studio house  
Garden  
Off street parking  
Double height studio room  
Freehold

Guide price £8,500,000



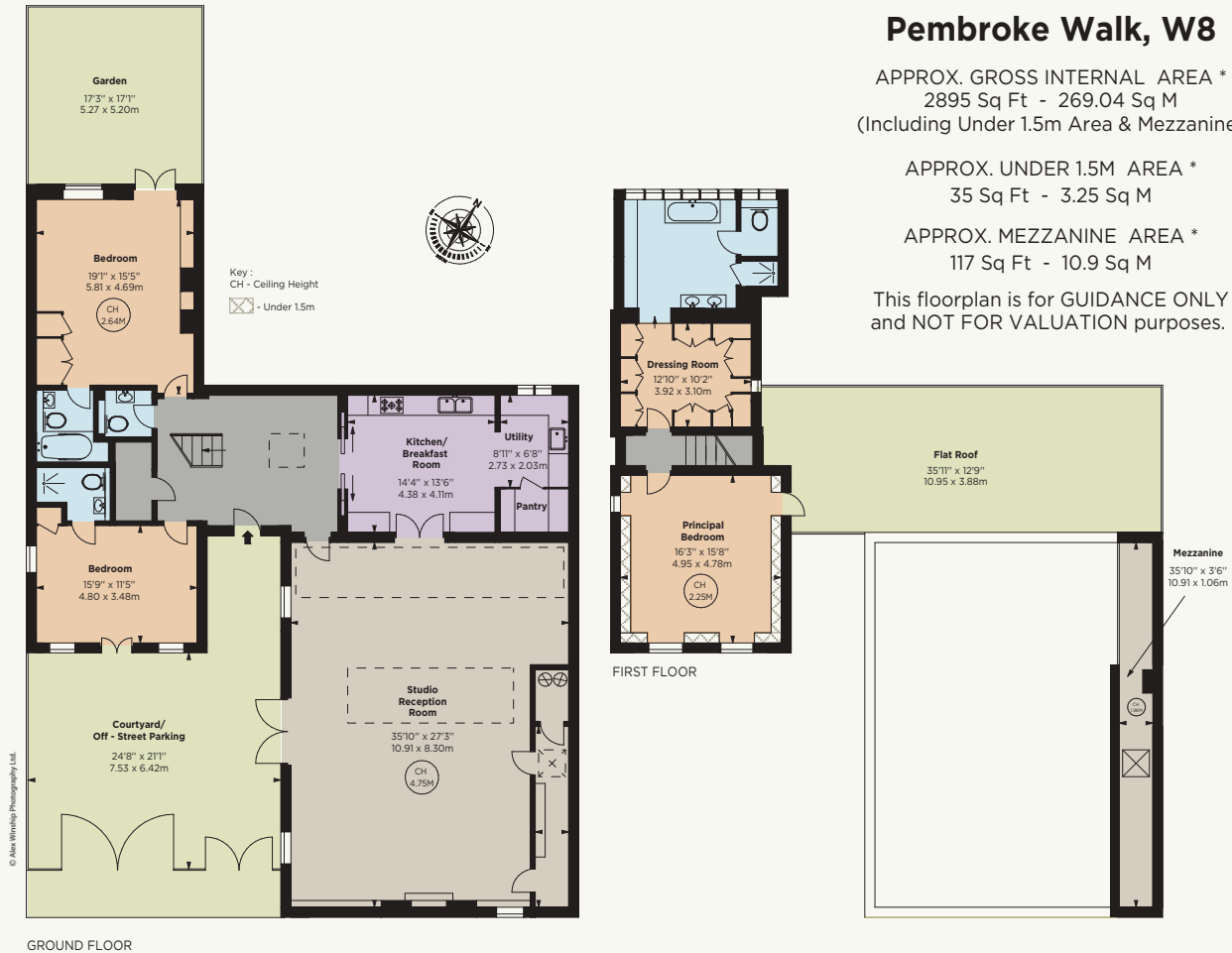
## Pembroke Walk, W8

APPROX. GROSS INTERNAL AREA \*  
2895 Sq Ft - 269.04 Sq M  
(Including Under 1.5m Area & Mezzanine)

APPROX. UNDER 1.5M AREA \*  
35 Sq Ft - 3.25 Sq M

APPROX. MEZZANINE AREA \*  
117 Sq Ft - 10.9 Sq M

This floorplan is for GUIDANCE ONLY  
and NOT FOR VALUATION purposes.



ALEX WINSHIP  
Photography

\* Figures for guidance only, not to be used for valuation purposes. Figures based on measurements of finished floor levels and are approximate and have been prepared in accordance with the current edition of the RICS Code of Measuring Practice.

MIP  
RICS  
Certified Property Measurer

## Strutt & Parker Kensington

103 Kensington Church Street, London W8 7LN  
020 7938 3666 | kensington@struttandparker.com



@struttandparker

struttandparker.com

IMPORTANT NOTICE: Strutt & Parker gives notice that: 1. These particulars do not constitute an offer or contract or part thereof. 2. All descriptions, photographs and plans are for guidance only and should not be relied upon as statements or representations of fact. All measurements are approximate and not necessarily to scale. Any prospective purchaser must satisfy themselves of the correctness of the information within the particulars by inspection or otherwise. 3. Strutt & Parker does not have any authority to give any representations or warranties whatsoever in relation to this property (including but not limited to planning/building regulations), nor can it enter into any contract on behalf of the Vendor. 4. Strutt & Parker does not accept responsibility for any expenses incurred by prospective purchasers in inspecting properties which have been sold, let or withdrawn. 5. We are able to refer you to SPF Private Clients Limited ("SPF") for mortgage broking services, and to Alexander James Interiors ("AJI"), an interior design service. Should you decide to use the services of SPF, we will receive a referral fee from them of 25% of the aggregate of the fee paid to them by you for the arrangement of a mortgage and any fee received by them from the product provider. Should you decide to use the services of AJI, we will receive a referral fee of 10% of the net income received by AJI for the services they provide to you. 6. If there is anything of particular importance to you, please contact this office and Strutt & Parker will try to have the information checked for you. Strutt & Parker is a trading style of BNP Paribas Real Estate Advisory & Property Management UK Limited. Photographs taken April 2026. Particulars prepared April 2026.

Strutt  
& Parker

Land and property. Since 1885.