



Television Centre, London, W12

Television Centre, London, W12

A fantastic three bedroom flat with park views on the fourth floor of this iconic West London development.

This immaculate and bright flat has been finished to an excellent specification and has a large, open plan reception room, high ceilings throughout and a fabulous fitted kitchen with Siemens appliances with doors onto a private balcony. The principal double bedroom has a separate dressing area and a stylish ensuite bathroom. The flat also benefits from two double further bedrooms a further shower room, underground parking and a balcony

The Television Centre is perfectly located near various underground stations such as White City, Wood Lane and Shepherds Bush and is further served by excellent overground, bus and road routes into the West End and Canary Wharf.

Reception room/Kitchen | Three bedrooms
Two bath/shower room | Balcony | Lift | 24 hour concierge | Car park space | Gym membership to Soho house Health Club | EPC Rating B

Terms

Tenure: Leasehold. 975 years from 20/09/2017

Service Charge: Approximately £8.45 per square foot

Local Authority: London Borough of Hammersmith and Fulham

Price: £1,465,000 Subject to Contract

Notting Hill

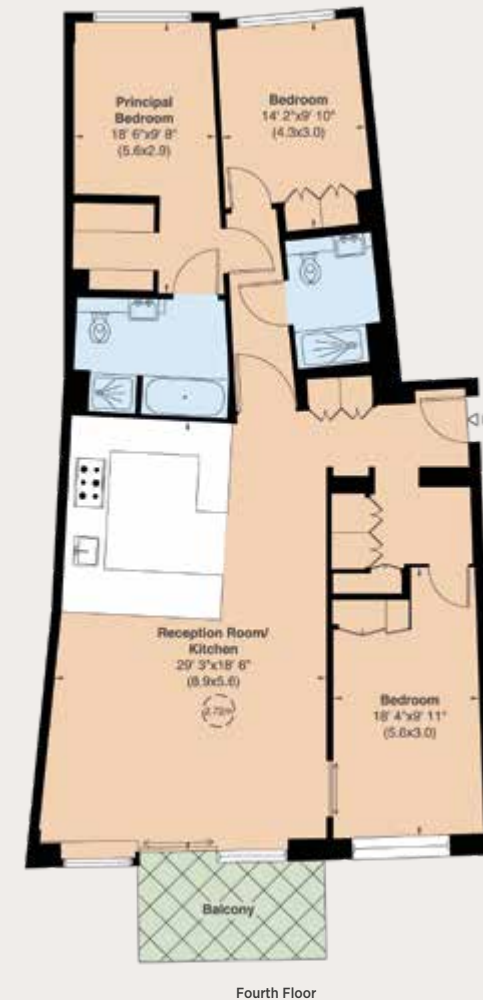
303 Westbourne Grove, London, W11 2QA

020 7221 1111

nottinghill@struttandparker.com



Approximate gross internal area 1,383 sq ft (128 sq m)
For identification purposes only.



IMPORTANT NOTICE

Strutt & Parker gives notice that: 1. These particulars do not constitute an offer or contract or part thereof. 2. All descriptions, photographs and plans are for guidance only and should not be relied upon as statements or representations of fact. All measurements are approximate and not necessarily to scale. Any prospective purchaser must satisfy themselves of the correctness of the information within the particulars by inspection or otherwise. 3. Strutt & Parker does not have any authority to give any representations or warranties whatsoever in relation to this property (including but not limited to planning/building regulations), nor can it enter into any contract on behalf of the Vendor. 4. Strutt & Parker does not accept responsibility for any expenses incurred by prospective purchasers in inspecting properties which have been sold, let or withdrawn. 5. We are able to refer you to SPF Private Clients Limited ("SPF") for mortgage broking services, and to Alexander James Interiors ("AJI"), an interior design service. Should you decide to use the services of SPF, we will receive a referral fee from them of 25% of the aggregate of the fee paid to them by you for the arrangement of a mortgage and any fee received by them from the product provider. Should you decide to use the services of AJI, we will receive a referral fee of 10% of the net income received by AJI for the services they provide to you. 6. If there is anything of particular importance to you, please contact this office and Strutt & Parker will try to have the information checked for you. Photographs taken July 2020. Particulars prepared July 2020. Strutt & Parker is a trading style of BNP Paribas Real Estate Advisory & Property Management UK Limited.